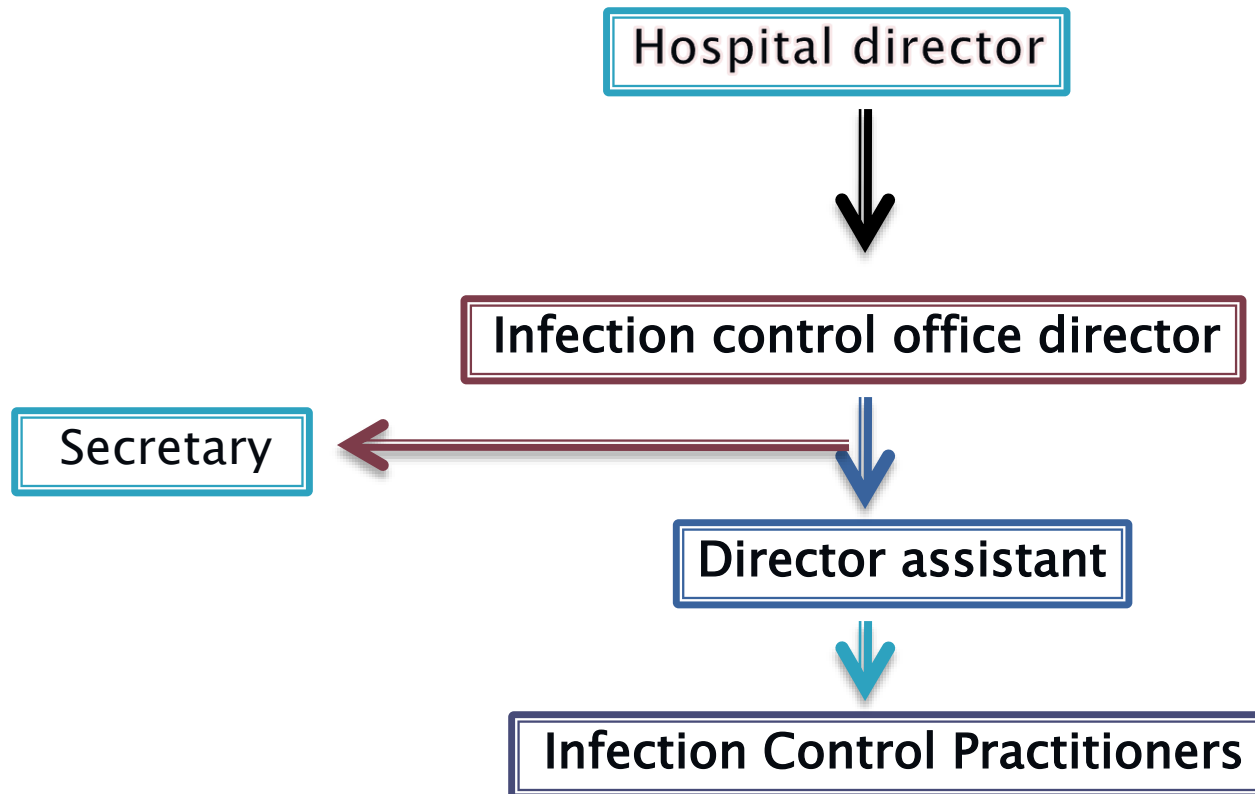




# Infection Control Program Mohammed Ibrahim

*Infection Control Office*

# Structure of Infection Prevention and Control office



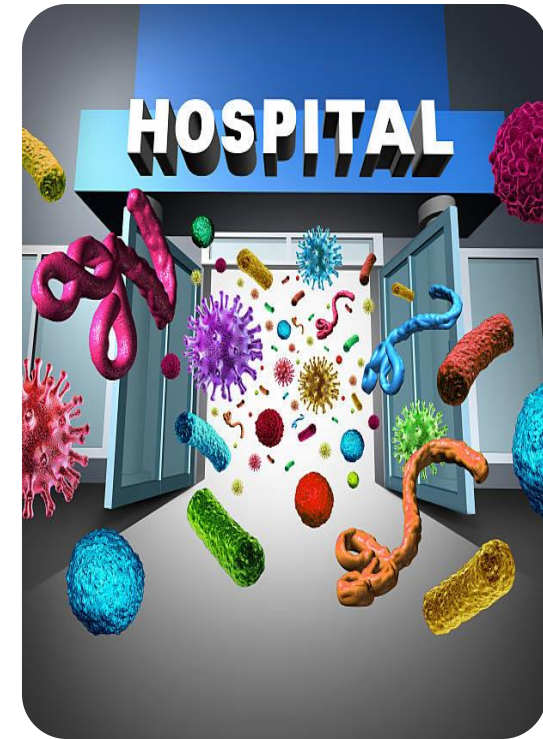
# The aim of infection control programs

## Protect:

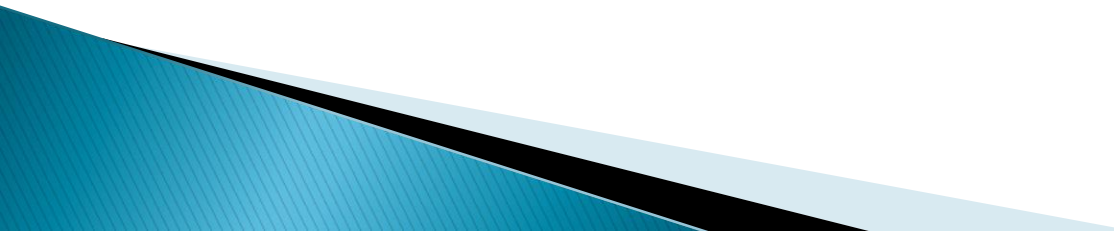
- Patients
  - Employees
  - Visitors
  - Trainee
- 

# Health care associated infections

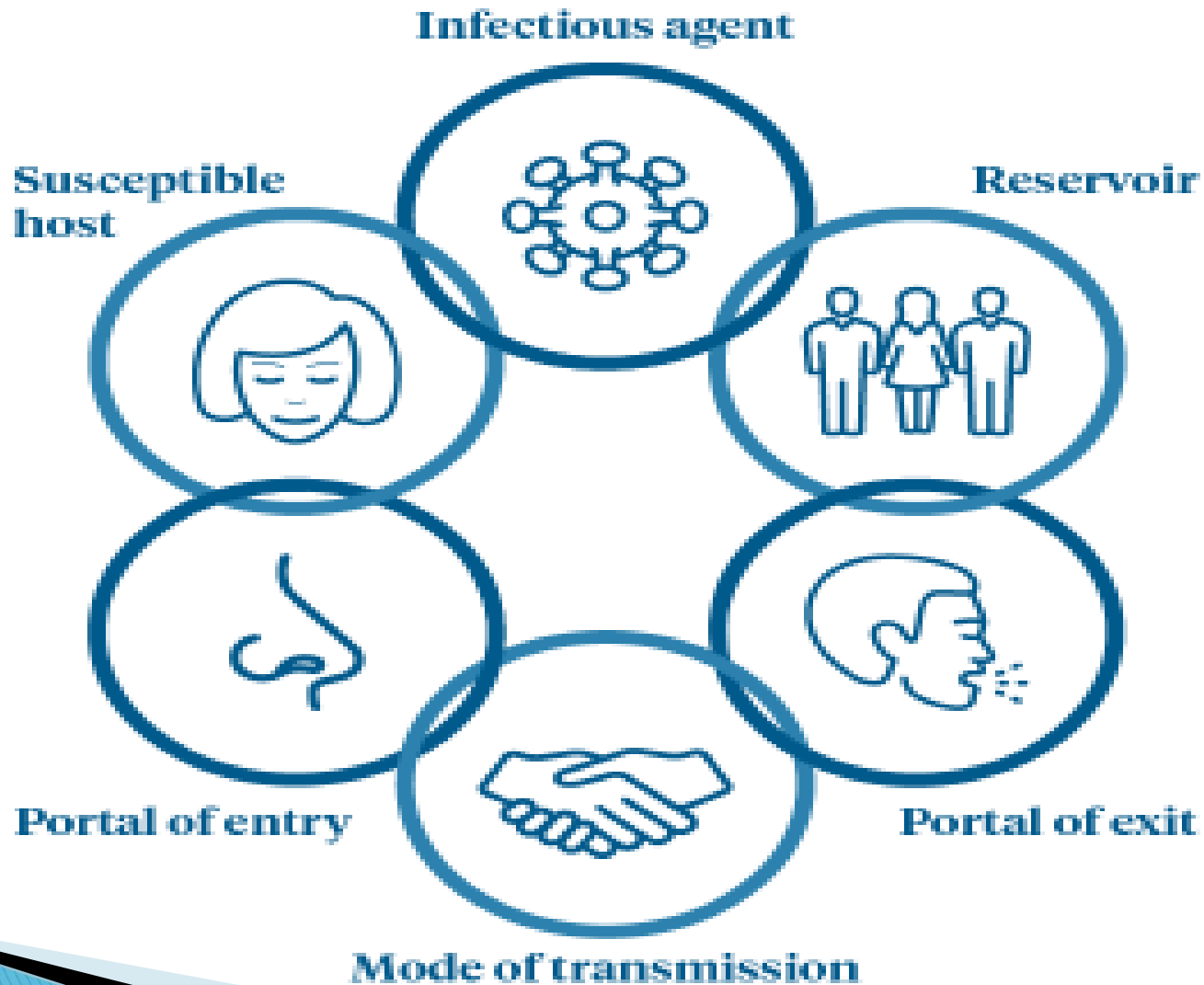
- ❖ Infections that were not present or in the incubation period at hospital admission.
- ❖ It usually occurs 48 hours after the patient is admitted to the hospital.
- ❖ It includes infections that appear when the patient is discharged from the hospital.



# Health care associated infections

- Respiratory tract infections (RTI)
  - Urinary tract infection (UTI)
  - Blood stream infection (BSI)
  - Surgical site infection (SSI)
- 

# Chain of Infection



أفضل طريقة لمنع العدوى هي غسل الأيدي





Flu

Colds

*C. difficile*

**Germs**

*E. coli*

Diarrhea



# 7 steps of hand hygiene



1. وضع الكمية المناسبة  
من الصابون او الكحول في راحة اليد



2. الفرك بين الاصابع  
من خلف اليد



3. التخليل بين الاصابع من  
الامام



4. عكس الاصابع داخل راحة اليد  
لتغسيل اطراف الاصابع



5. فرك حول الابهام بطريقة دائرية



6. فرك رأس اطراف الاصابع  
في راحة اليد للوصول الى الاظافر



7. فرك الرسغ

# Cover Your Cough and Sneeze!



Use a tissue to cover your mouth and nose.

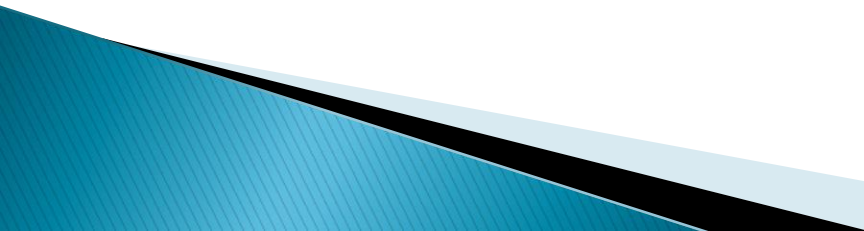


If you don't have a tissue, sneeze or cough into your arm.



# Precautions based on transmission routes

## Types of precautions:

- ✓ Standard precautions
  - ✓ Contact isolation
  - ✓ Droplet isolation
  - ✓ Airborne isolation
  - ✓ Protective insulation
- 

# Isolation Cards بطاقات العزل



# مصادر العدوى حول المريض بالصور المتحركة



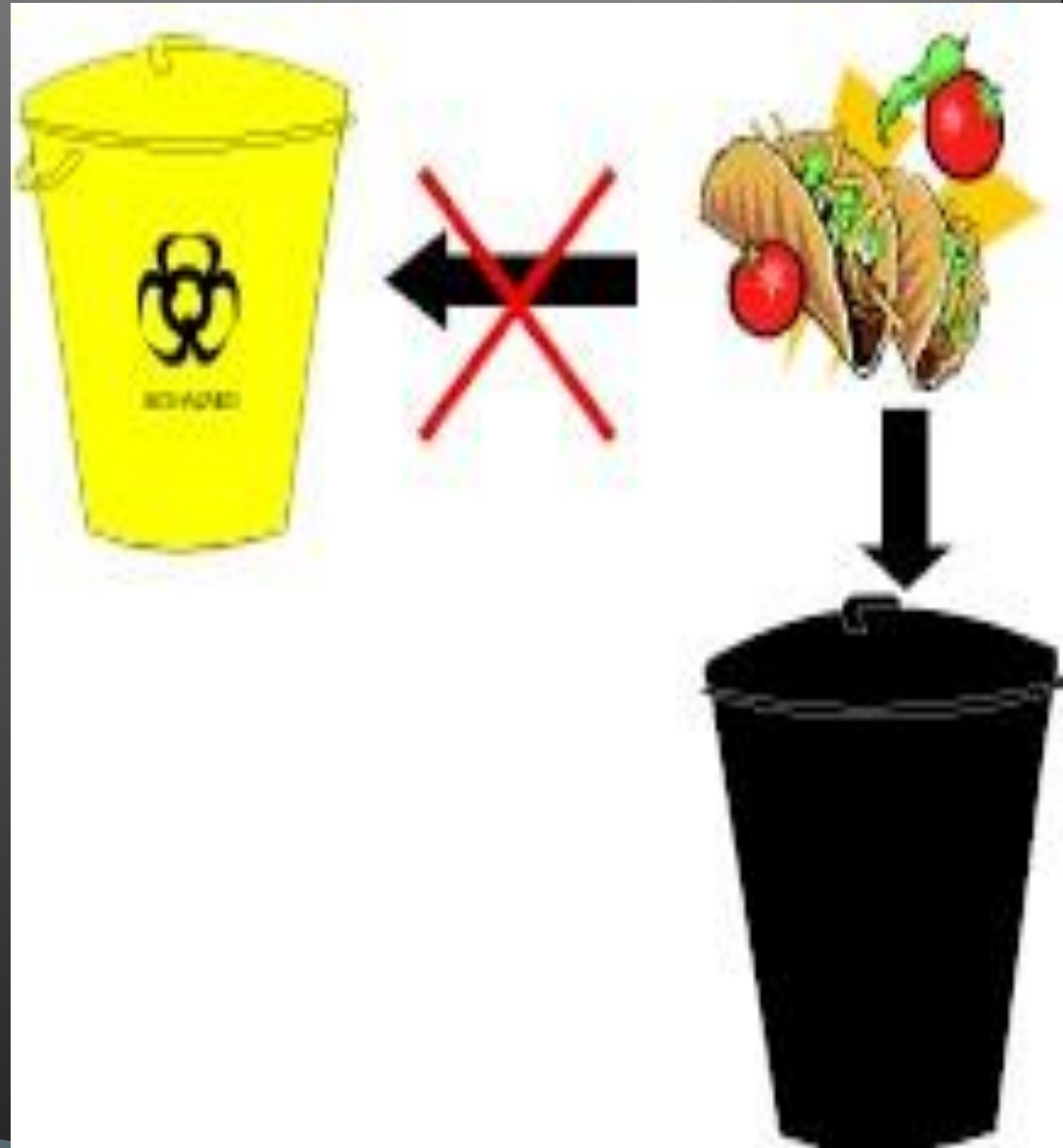
Medical waste

النفايات الطبية

# Medical waste النفايات الطبية

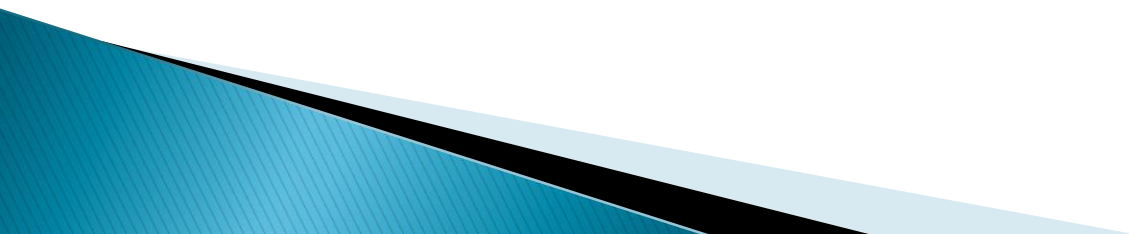


# النفايات المنزلية Household waste





# Patient Environment



# MRSA

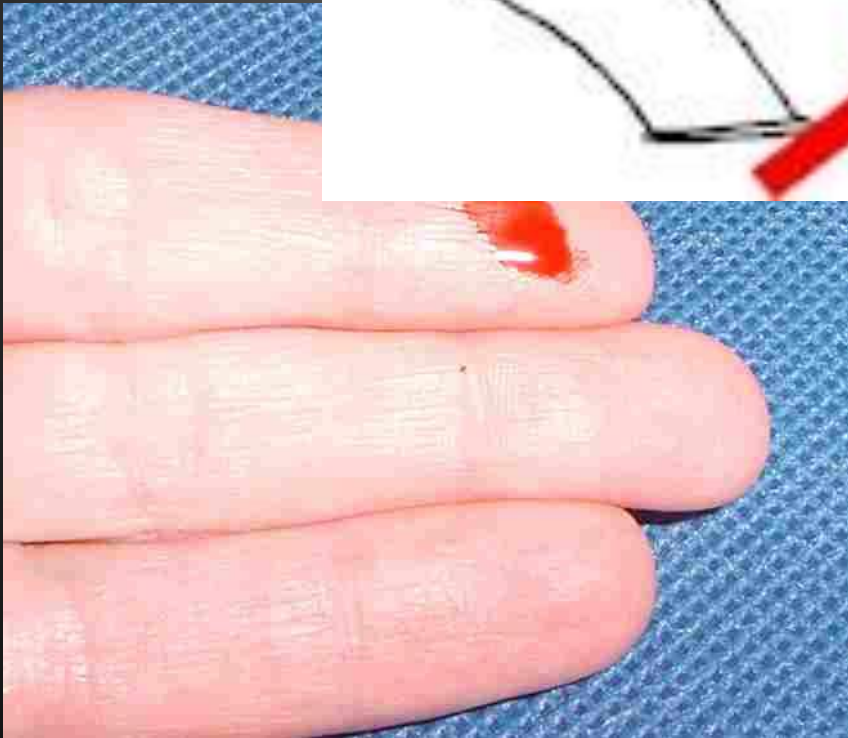


- ✓ Side rails: 100%
- ✓ BP monitor: 88%
- ✓ TV remote: 75%
- ✓ The table next to the patient:
- ✓ Bathroom: 63 %



# Needle stick





# Safety Injection



تخلص من المحقن والإبرة معاً في الوعاء المقاوم للثقب  
Puncture Resistance container

# Vaccines

- Hepatitis B vaccine
- Influenza vaccine