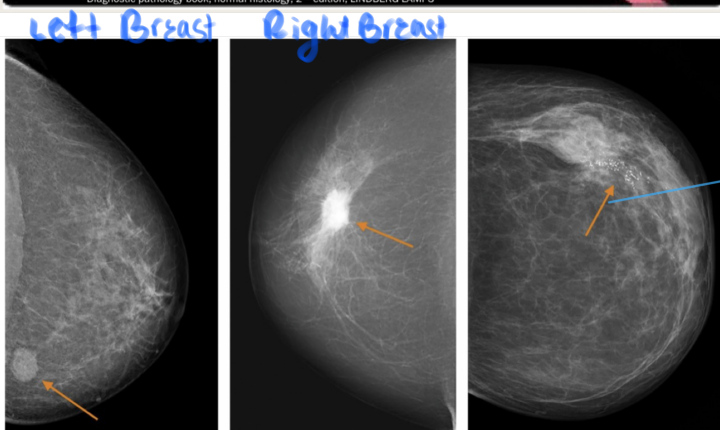
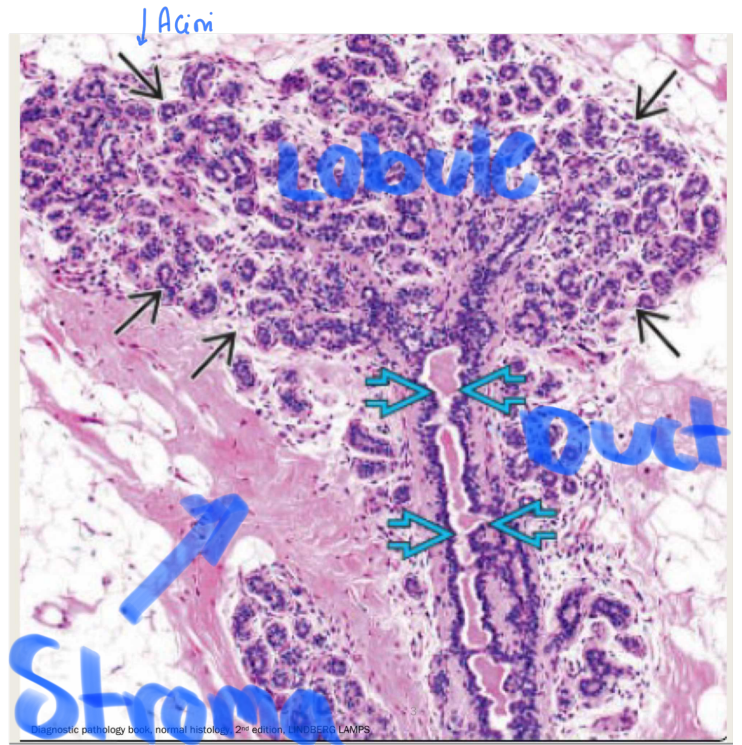
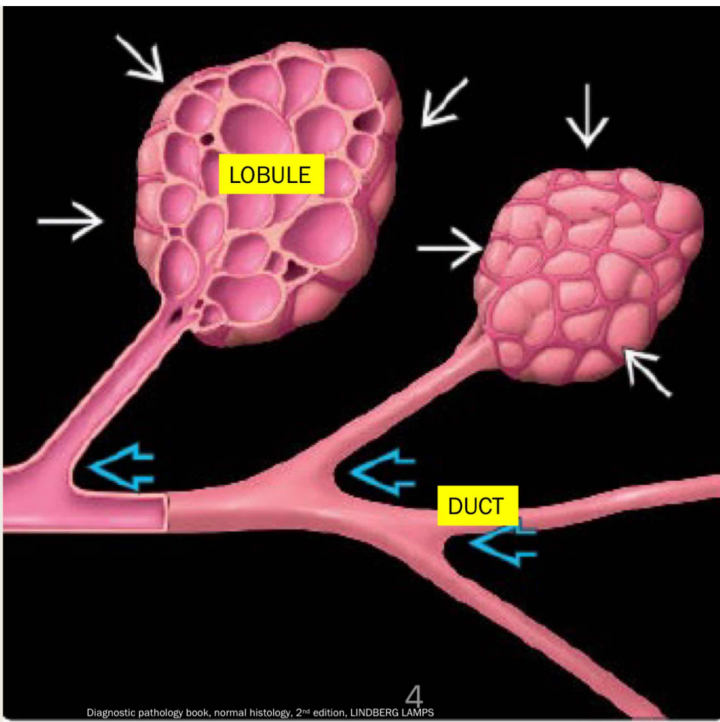
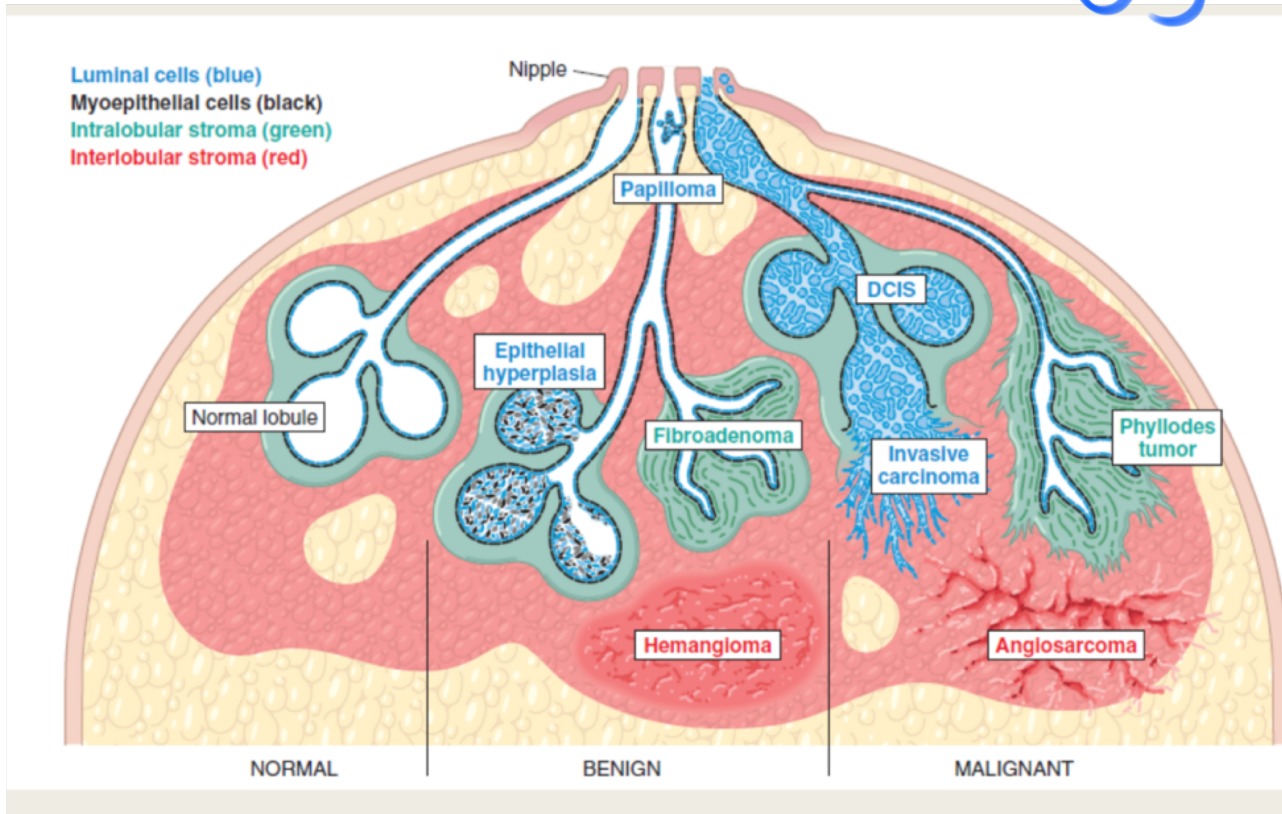
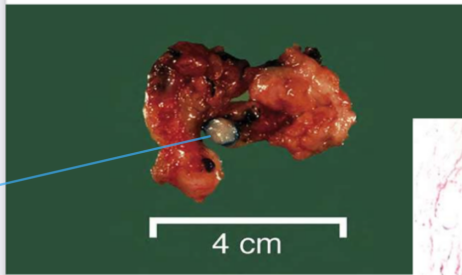


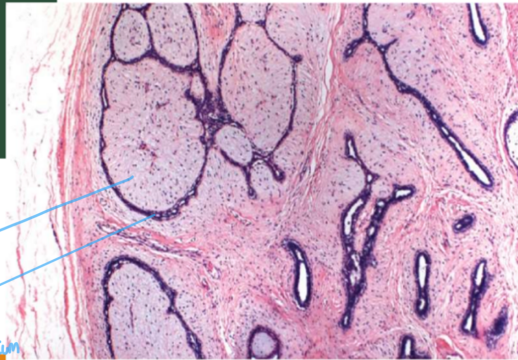
Breast Pathology - LAB



Fibroadenoma



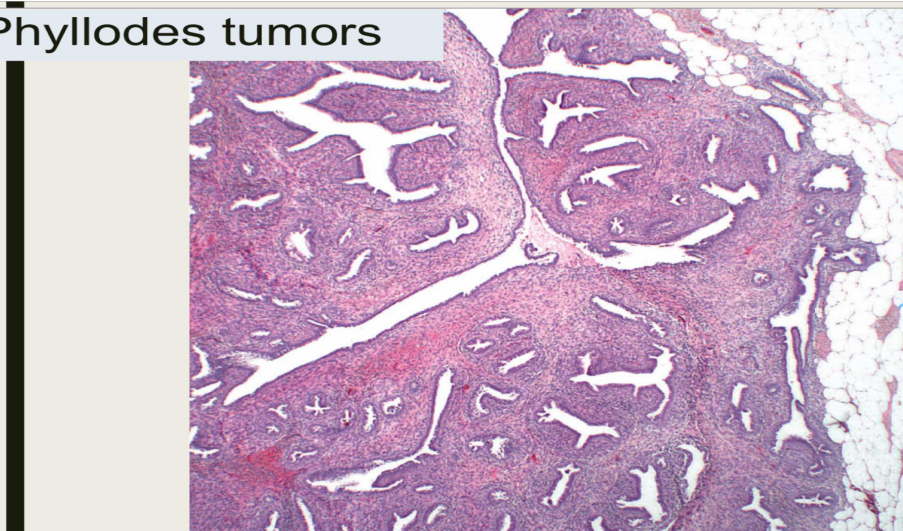
Fibroadenoma injected with a Blue dye facilitating Excision process



Stromal cells
Slit-like spaces lined with epithelium

© Elsevier, Kumar et al: Robbins Basic Pathology 8e - www.studentconsult.com

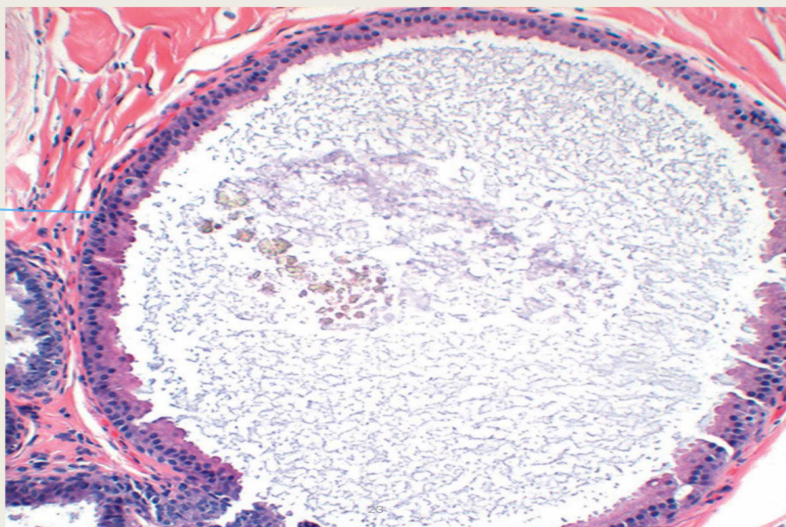
Phyllodes tumors



Tongues of Tumor Btw Fat.

Nonproliferative Breast Changes (Fibrocystic Changes)

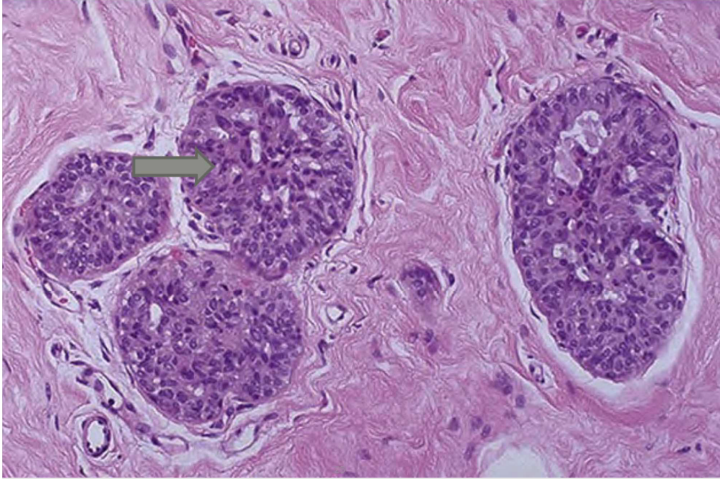
Nonproliferative disease. cyst



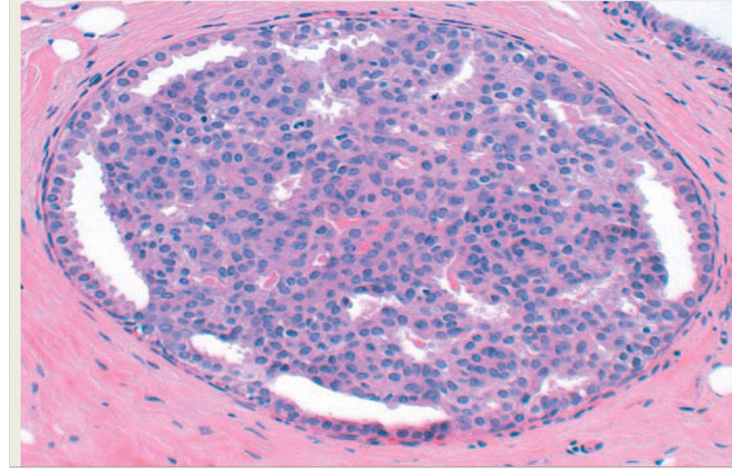
Apocrine Cyst.

Proliferative disease without atypia

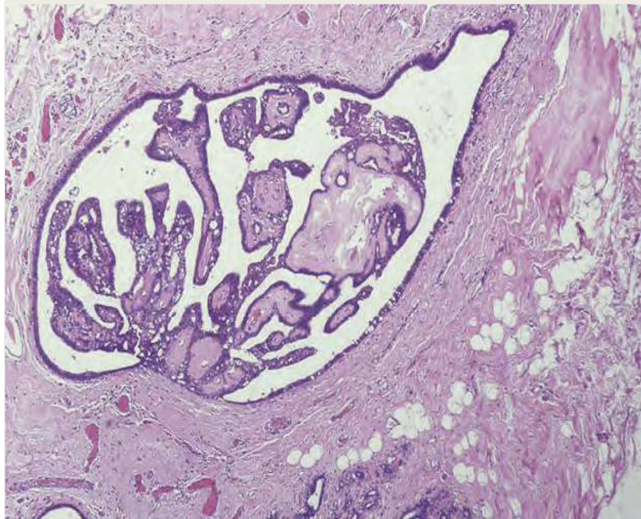
epithelial hyperplasia



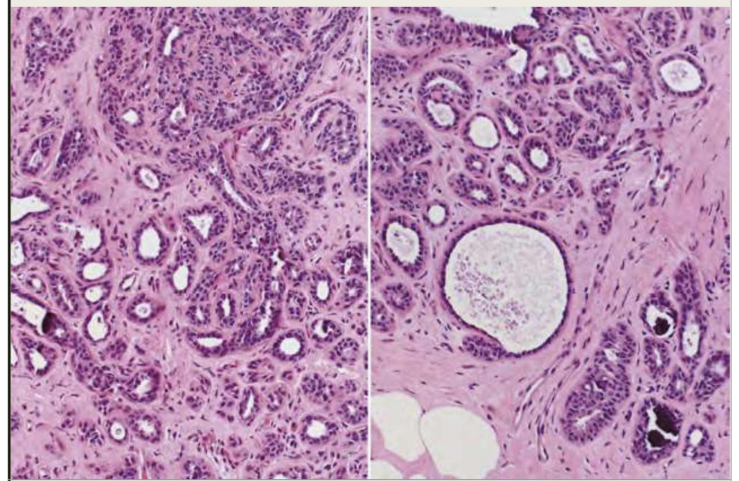
epithelial hyperplasia



intraductal papilloma

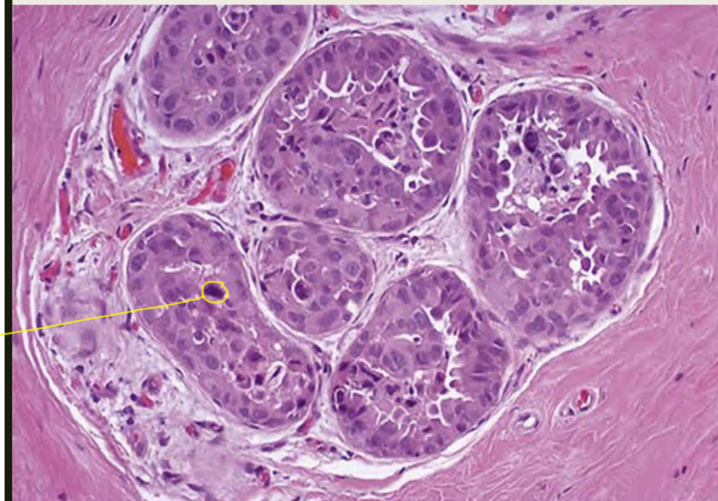


Sclerosing adenosis



Proliferative disease with atypia

atypical ductal hyperplasia

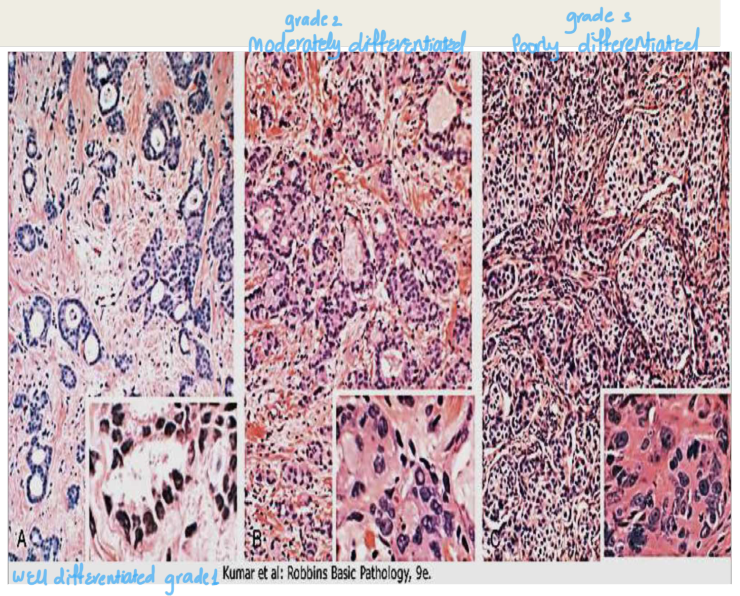


Hyperchromasia

Ductal carcinoma in-situ (DCIS)

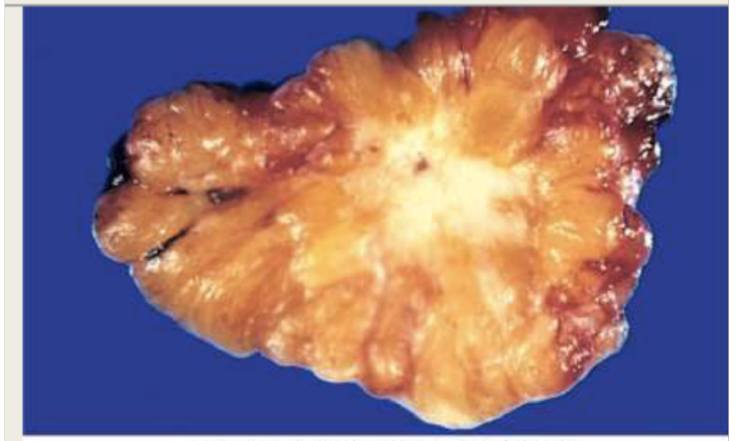
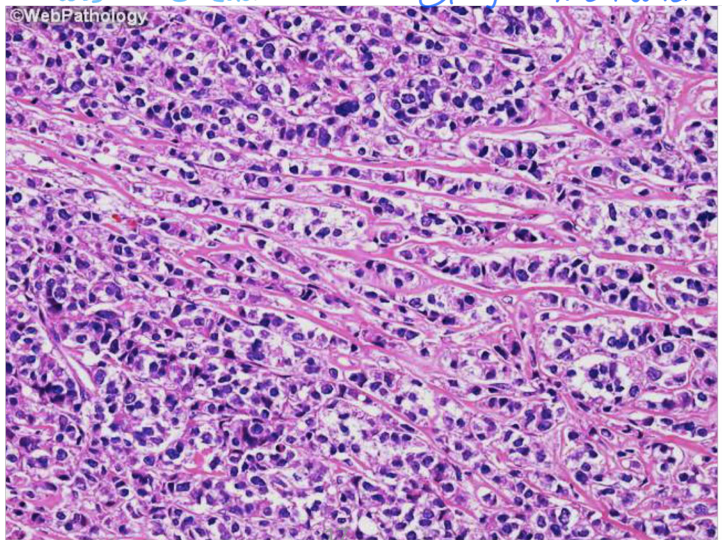


Invasive ductal carcinoma

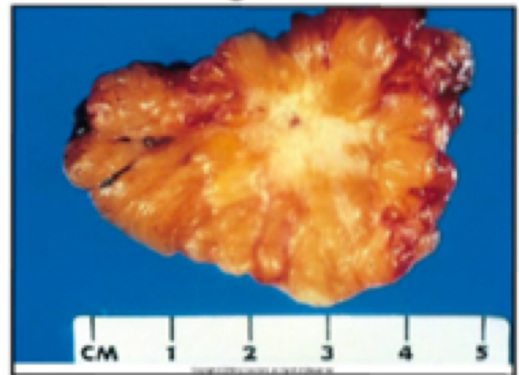


Invasive lobular carcinoma

"loss of E-cadherin" "Single file Pattern"

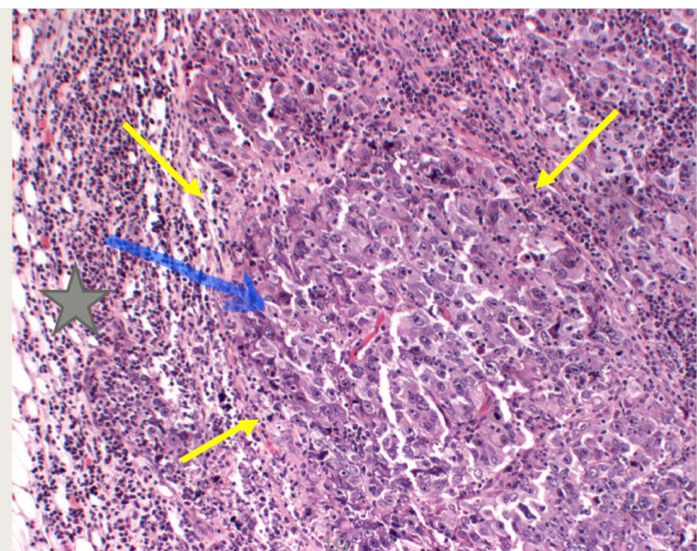


INVASIVE DUCTAL CARCINOMA -gross-



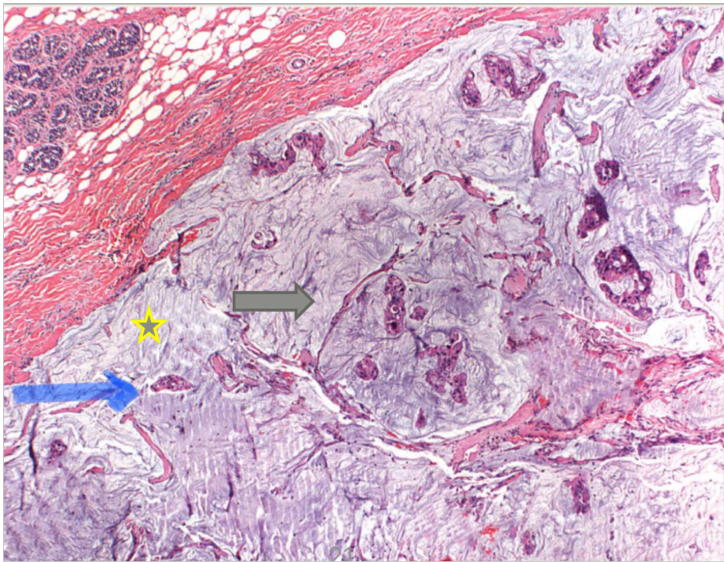
↳ from Google 13

carcinoma with Medullary features:



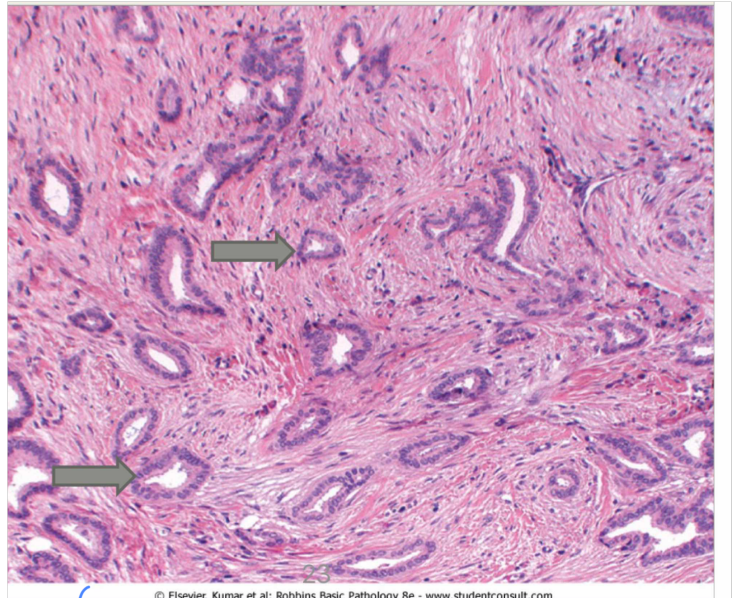
- Blue arrow: Anaplastic epithelial proliferation + scattered mitosis.
- yellow arrows: Dense lymphocytic infiltrate.

Colloid (mucinous) carcinoma



- * Yellow Star: An area of extracellular mucin.
- * Blue arrow: An island of malignant cells.

Tubular carcinomas



- ↳ Arrows point for tubular proliferation.

Good luck!

Rajyan Shtewe