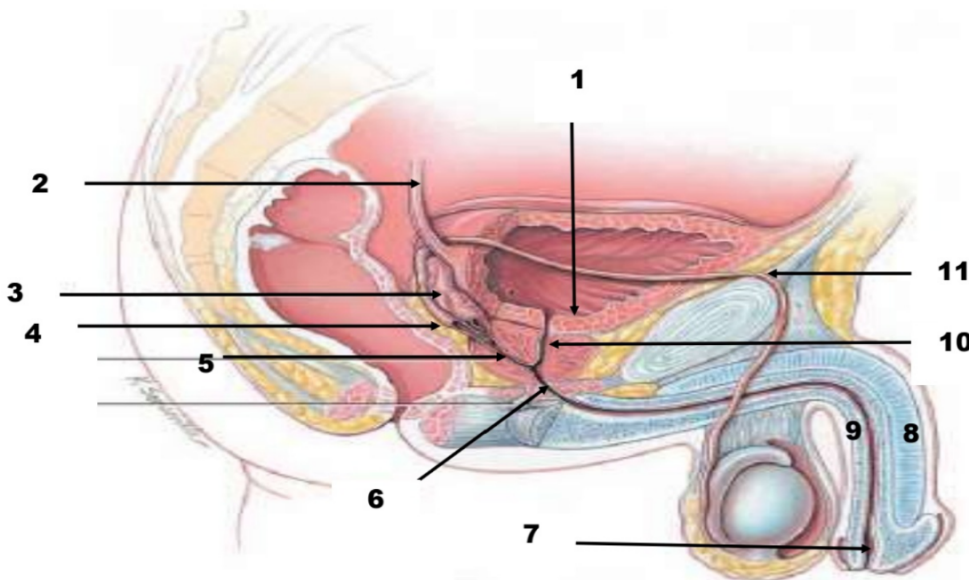
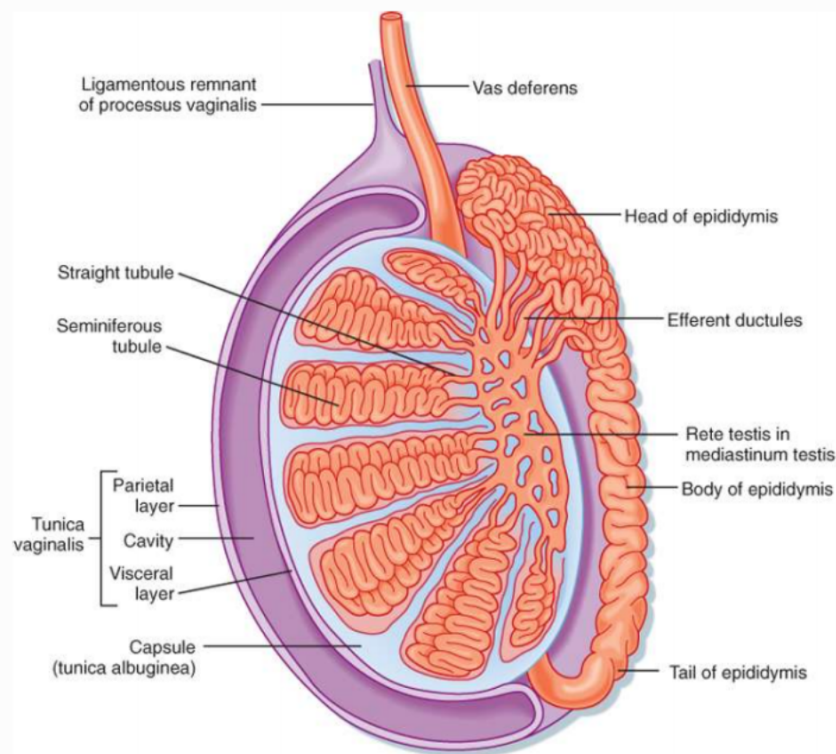
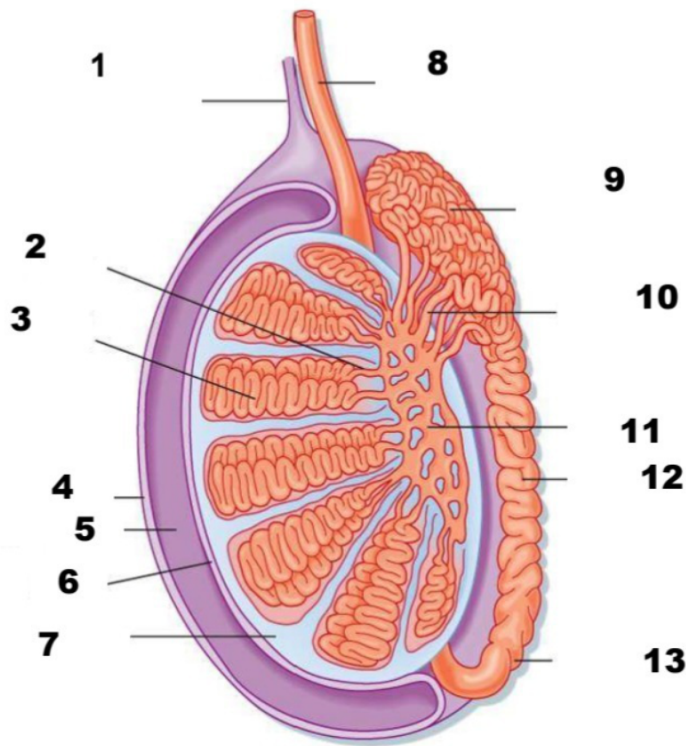


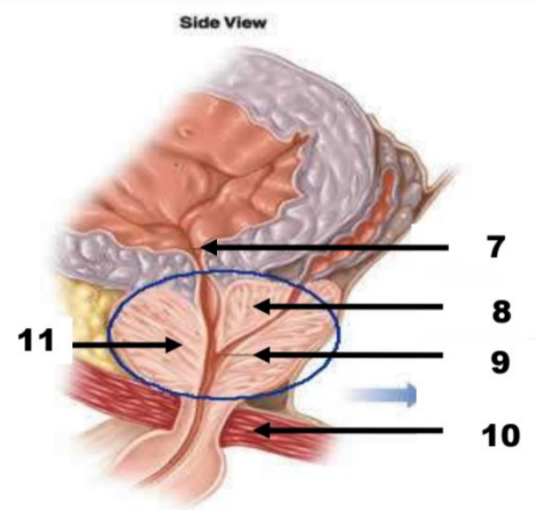
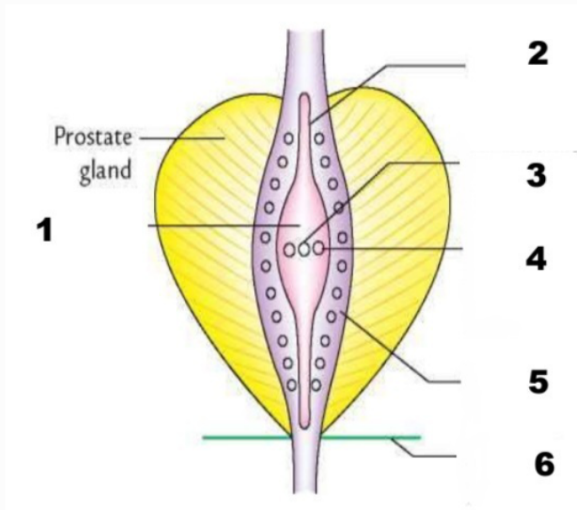
MALE GENITAL SYSTEM LAB

* Checklist

- Scrotum and its layers
- Testis
- Epididymis (parts)
- Spermatic cord, its contents
- Vas deference
- Seminal vesicles
- Ejaculatory ducts
- Prostate
- Internal structure of the penis (root ,corpora ,bulb)
- Parts of male urethra

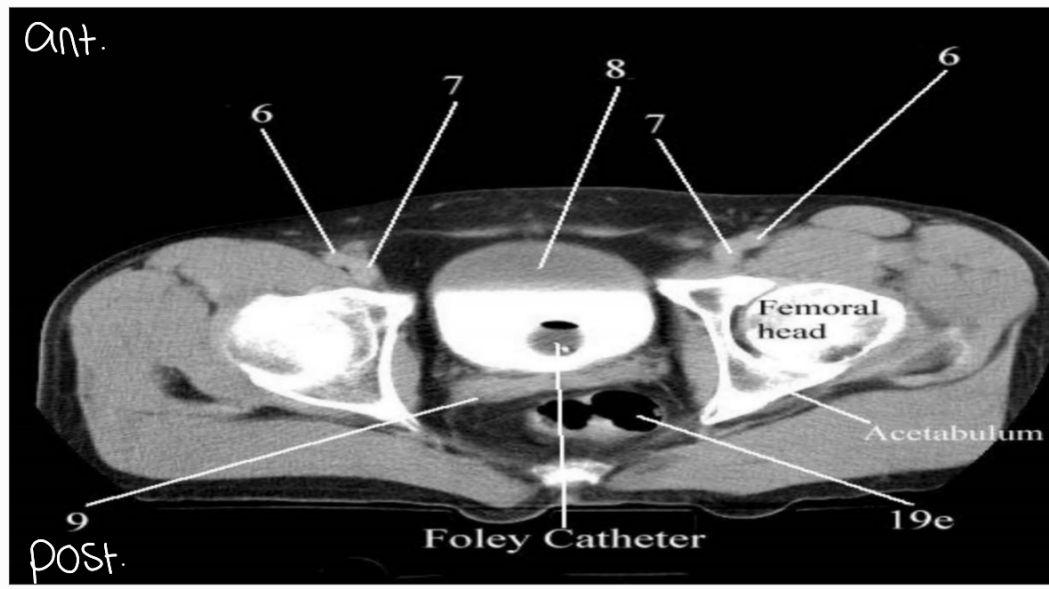


- ① trigone of bladder
- ② ureter
- ③ seminal vesicle
- ④ recto vesical fascia
- ⑤ ejaculatory duct
- ⑥ membranous urethra
- ⑦ navicular fossa
- ⑧ corpus cavernosum
- ⑨ corpus spongiosum
- ⑩ prostate urethra
- ⑪ vas differens

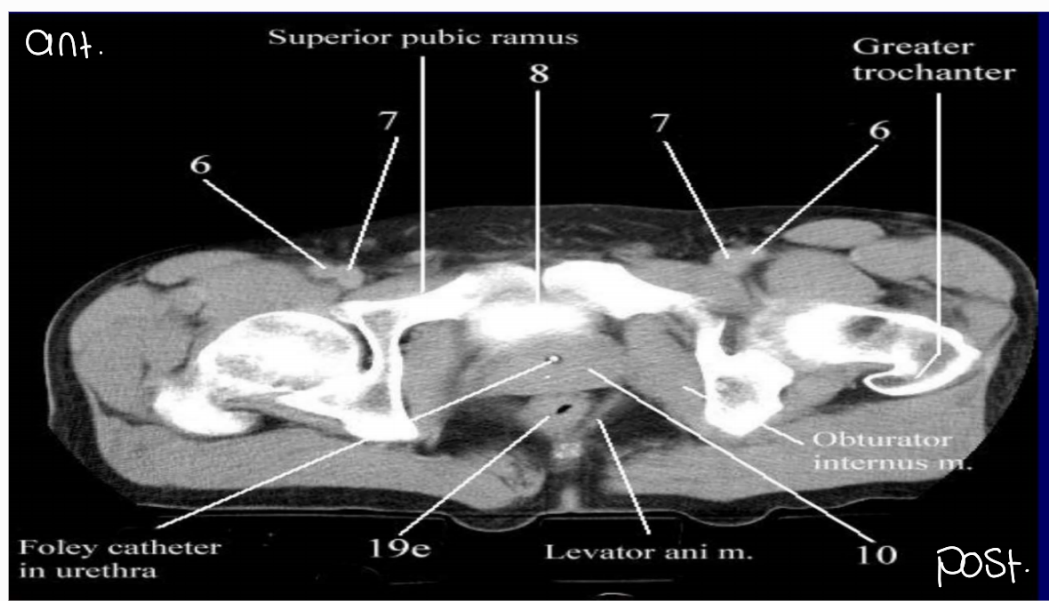


- ① Seminal Colliculus
- ② Urethral Crest
- ③ prostatic utricle
- ④ ejaculatory duct
- ⑤ prostatic sinus
- ⑥ perineal membrane

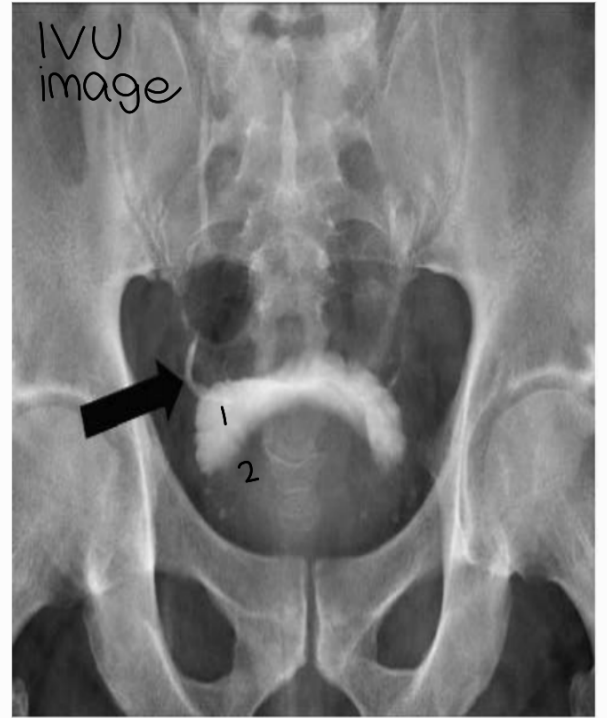
- ⑦ Neck of bladder
- ⑧ median lobe of prostate
- ⑨ post. lobe of prostate
- ⑩ ext. urethral sphincter
- ⑪ Ant. lobe of prostate



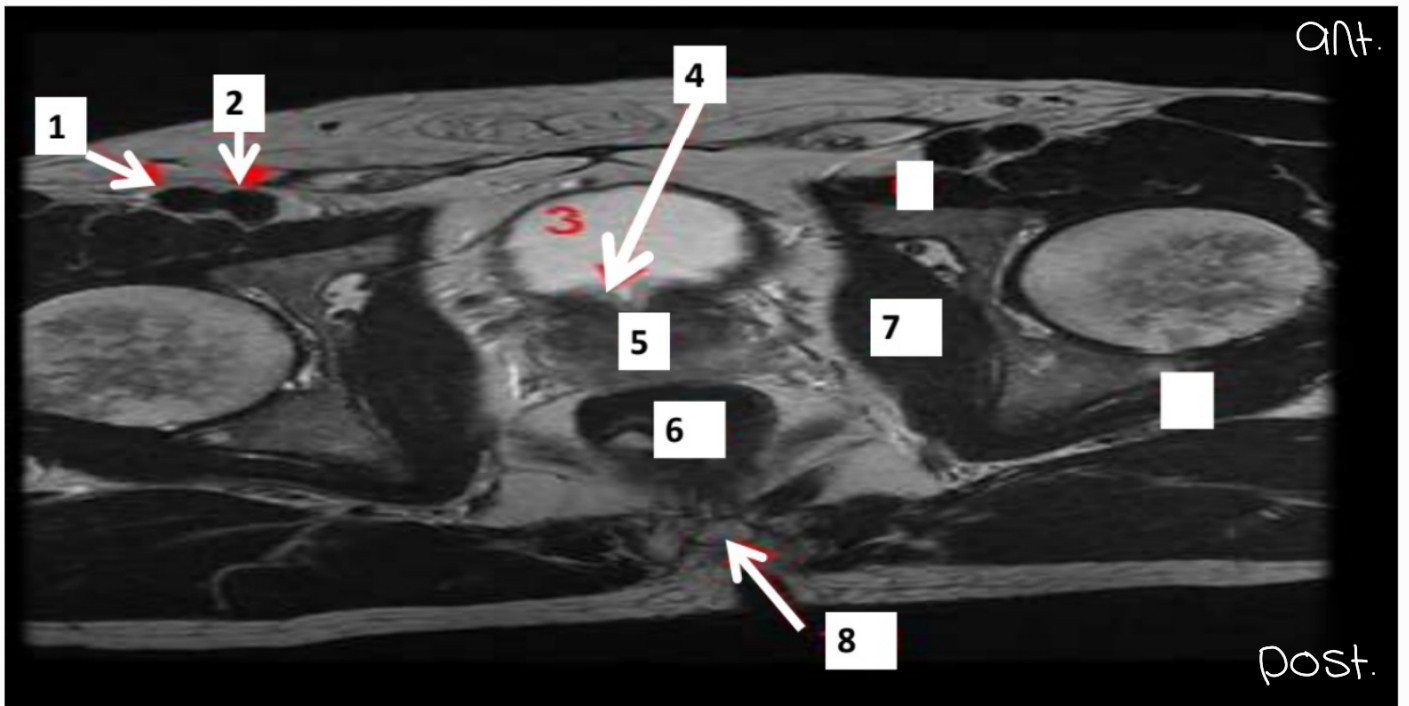
- ⑥ Femoral A
- ⑦ Femoral V
- ⑧ bladder
- ⑨ Seminal vesicle
- ⑩ prostate gland
- ⑪ rectum



- ⑥ Superior pubic ramus
- ⑦ Greater trochanter
- ⑧ Obturator internus m.
- ⑨ Levator ani m.
- ⑩ Foley catheter in urethra
- ⑪ rectum



- ① bladder
- ② enlarged prostate bulging inside bladder



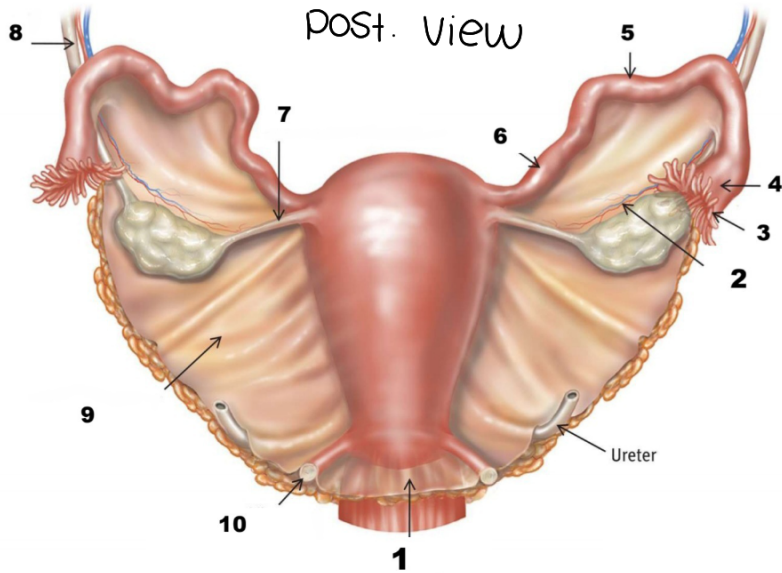
- ① femoral A
- ② femoral V
- ③ bladder
- ④ neck of bladder
- ⑤ prostate
- ⑥ rectum
- ⑦ Obturator internus
- ⑧ Coccyx

FEMALE GENITAL SYSTEM AND PERINEUM LAB

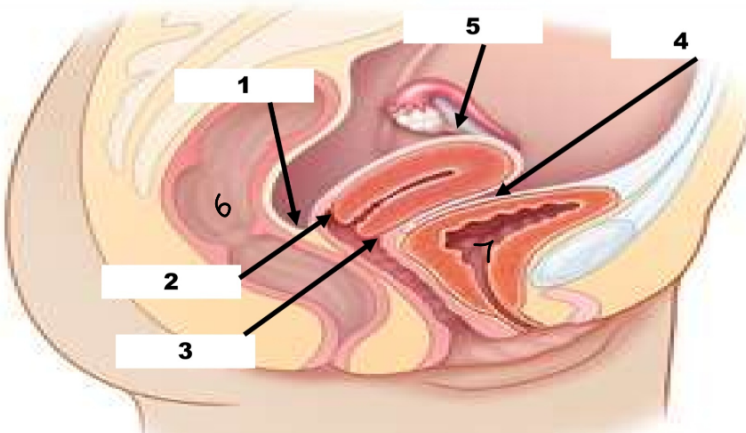
* checklist

4th Practical Check list

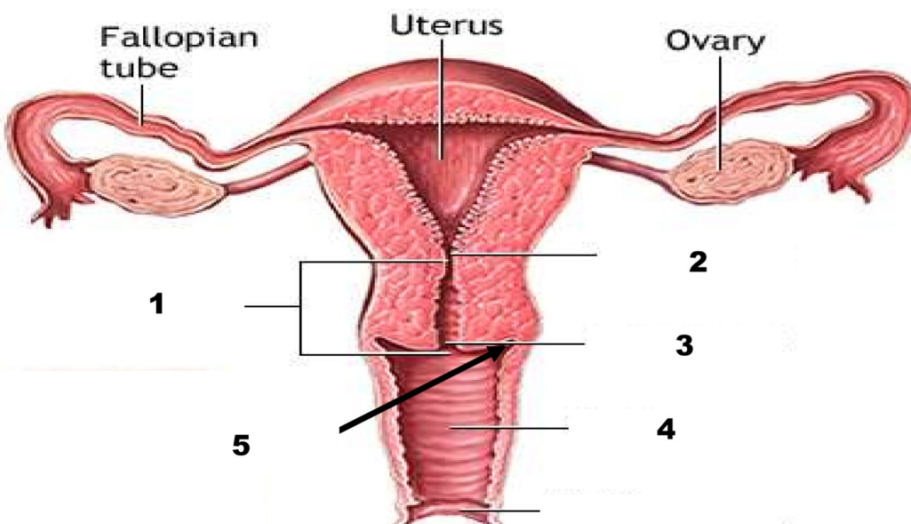
1. Ovaries ;surfaces ,poles ,ligaments ,relation, blood supply
2. Uterus ;parts ,position, relation ,peritoneal covering ,blood supply
3. Ligament of the uterus
4. Cervix ,vagina ,vaginal fornices
5. Superficial ,deep perineal pouches ,boundaries ,contents
6. Ischiorectal fossa ; boundaries ,contents



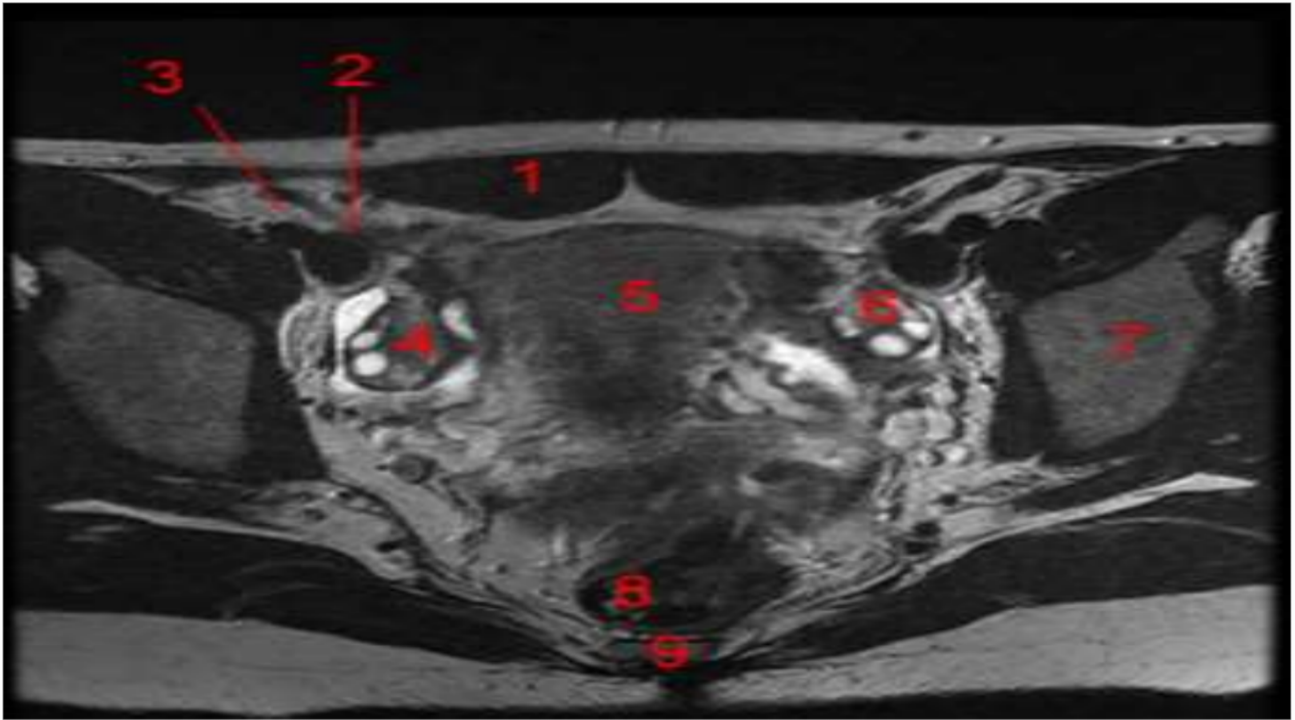
- ① rectouterine pouch (doglas)
- ② mesovarium of broad lig.
- ③ fimbria
- ④ infundibulum
- ⑤ ampulla of uterine tube
- ⑥ isthmus
- ⑦ round lig. of ovary
- ⑧ suspensory lig. of ovary
- ⑨ mesometrium of broad lig.
- ⑩ uterosacral lig.



- ① rectouterine pouch (doglas)
- ② post. vaginal fornix
- ③ ant. vaginal fornix
- ④ vesico uterine pouch
- ⑤ round lig. of ovary
- ⑥ rectum
- ⑦ bladder

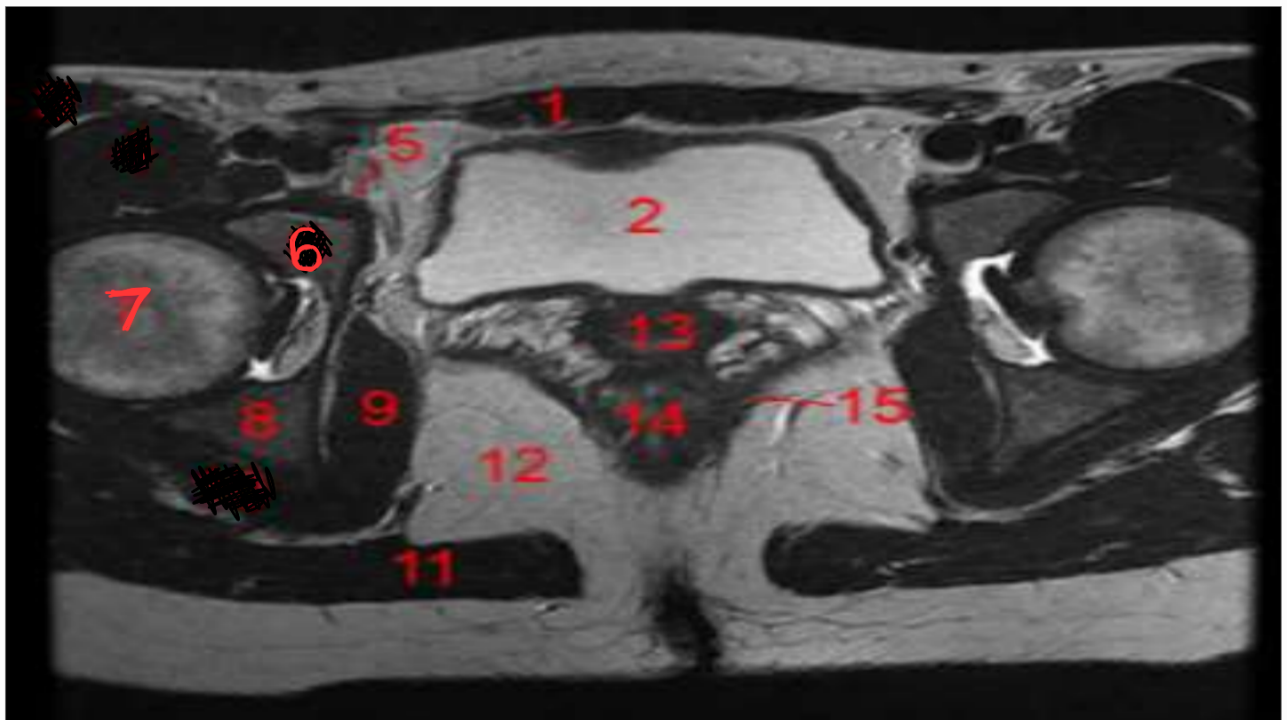


- ① cervix
- ② internal OS
- ③ external OS
- ④ vagina
- ⑤ lat. vaginal fornix



- ① rectus abdominis
- ② ext. iliac V
- ③ ext. iliac A
- ④ rt ovary
- ⑤ Uterus

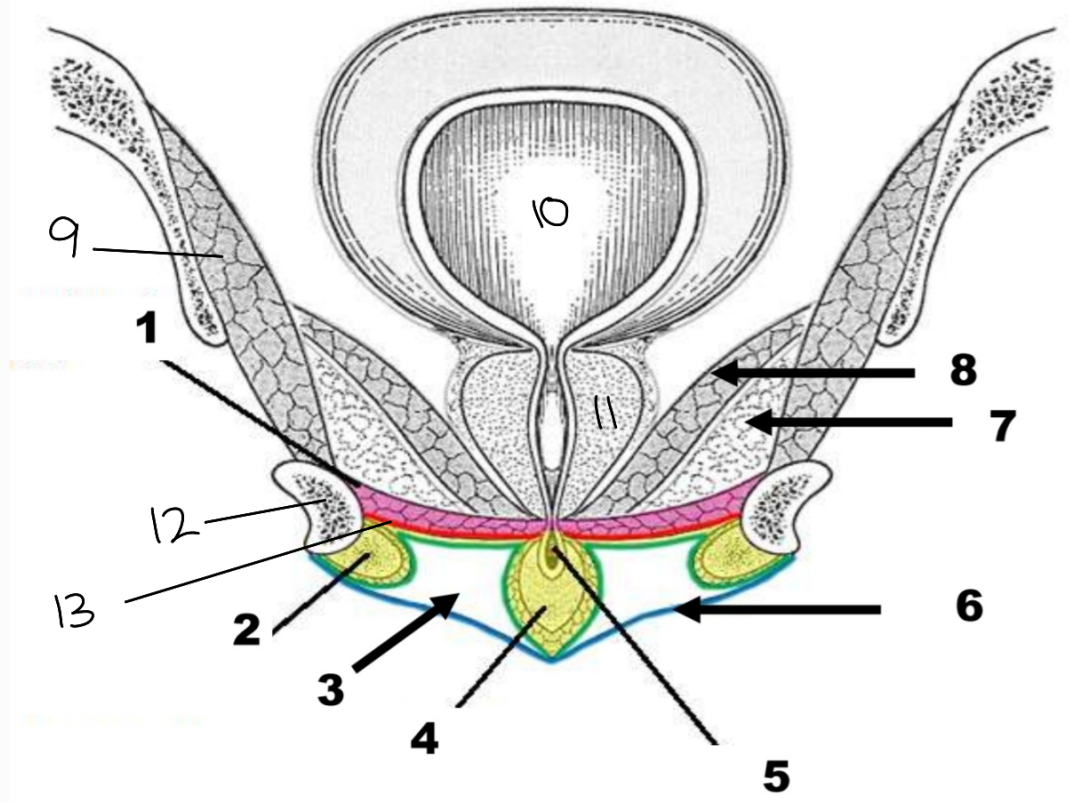
- ⑥ lt ovary
- ⑦ ilium
- ⑧ rectum
- ⑨ Coccyx



- ① rectus abdominis
- ② bladder
- ⑥ sup. pubic ramus
- ⑦ head of femur
- ⑧ inf. pubic ramus
- ⑨ Obturator internus

- ⑪ gluteus Maximus
- ⑫ ischioanal fossa
- ⑬ Vagina
- ⑭ rectum
- ⑮ levator ani

* perineum



- ① Urogenital diaphragm
↳ ext. Urethral Sphincter + transverse perineal M
- ② crus of penis (covered by ischio cavernosus M)
- ③ superficial perineal pouch
- ④ bulb of penis (covered by bulbus spongiosus M)
- ⑤ urethra
- ⑥ Colles' fascia
- ⑦ deep perineal pouch
- ⑧ levator ani
- ⑨ obturator internus
- ⑩ bladder
- ⑪ prostate
- ⑫ pubic arch
- ⑬ perineal membrane