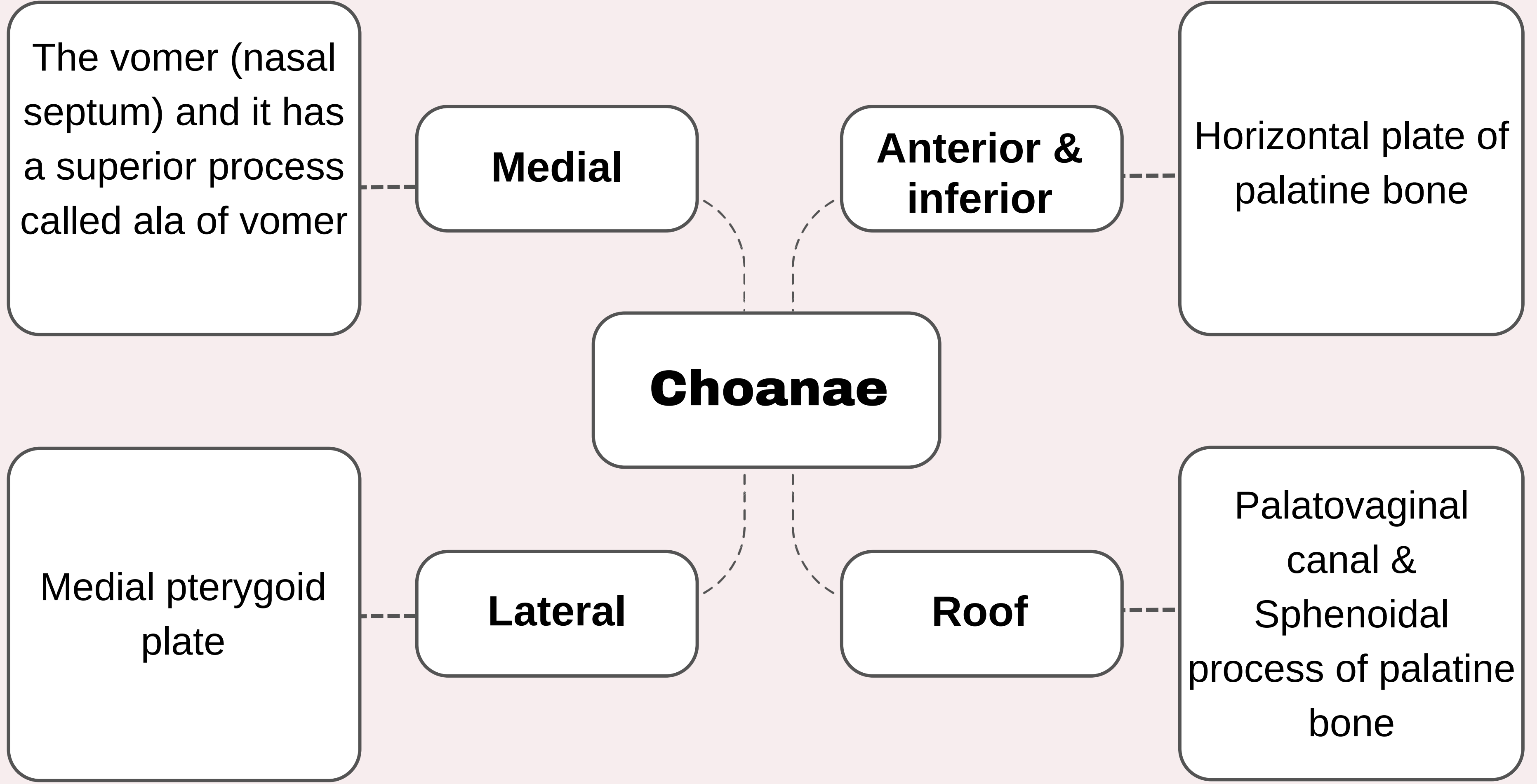


Anatomic Relations



The vomer (nasal septum) and it has a superior process called ala of vomer

Medial

Anterior & inferior

Horizontal plate of palatine bone

Choanae

Medial pterygoid plate

Lateral

Roof

Palatovaginal canal & Sphenoidal process of palatine bone

Palatovaginal canal

vomer

Ala of vomer

Vaginal process of medial pterygoid plate

Sphenoidal process of palatine bone

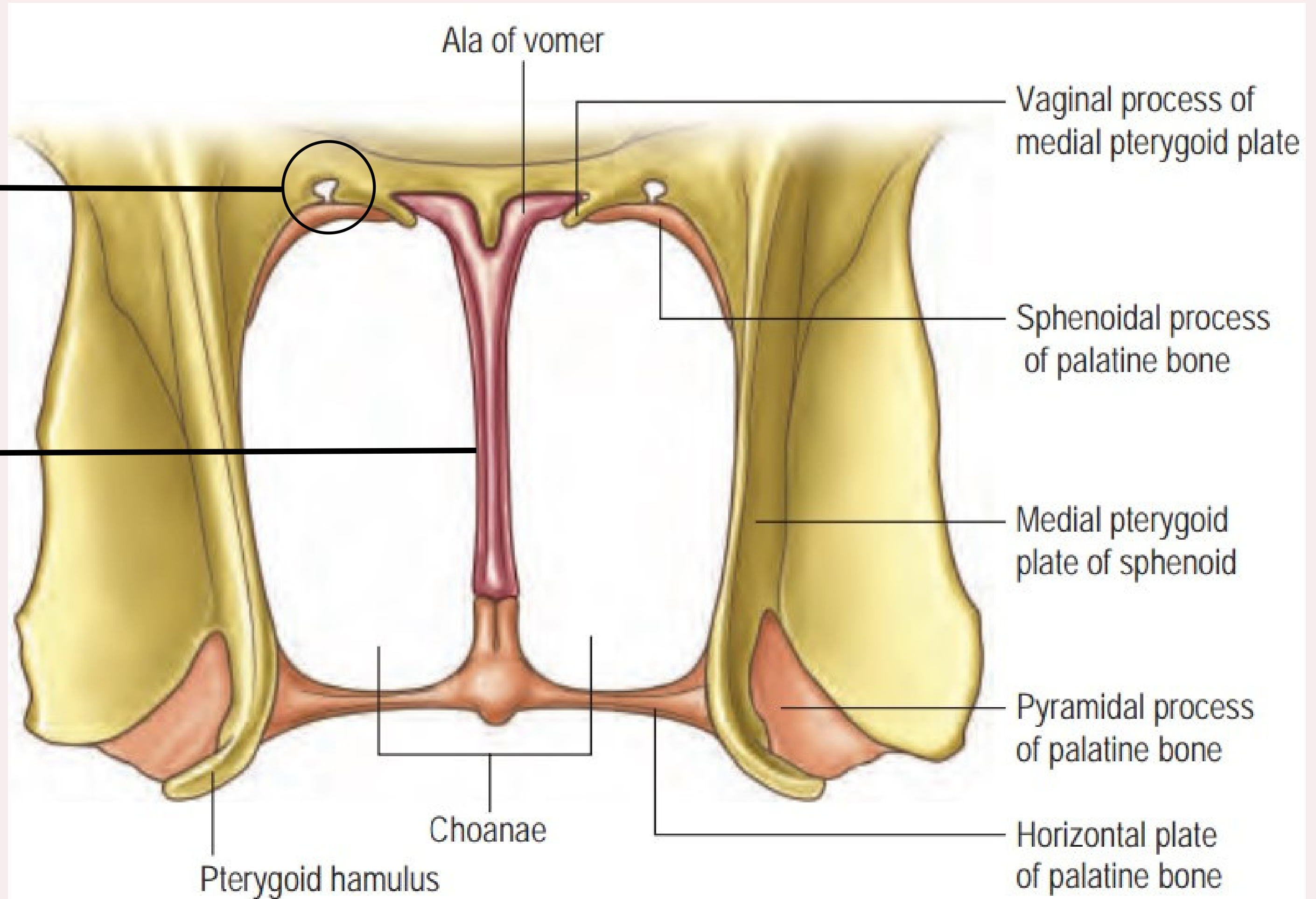
Medial pterygoid plate of sphenoid

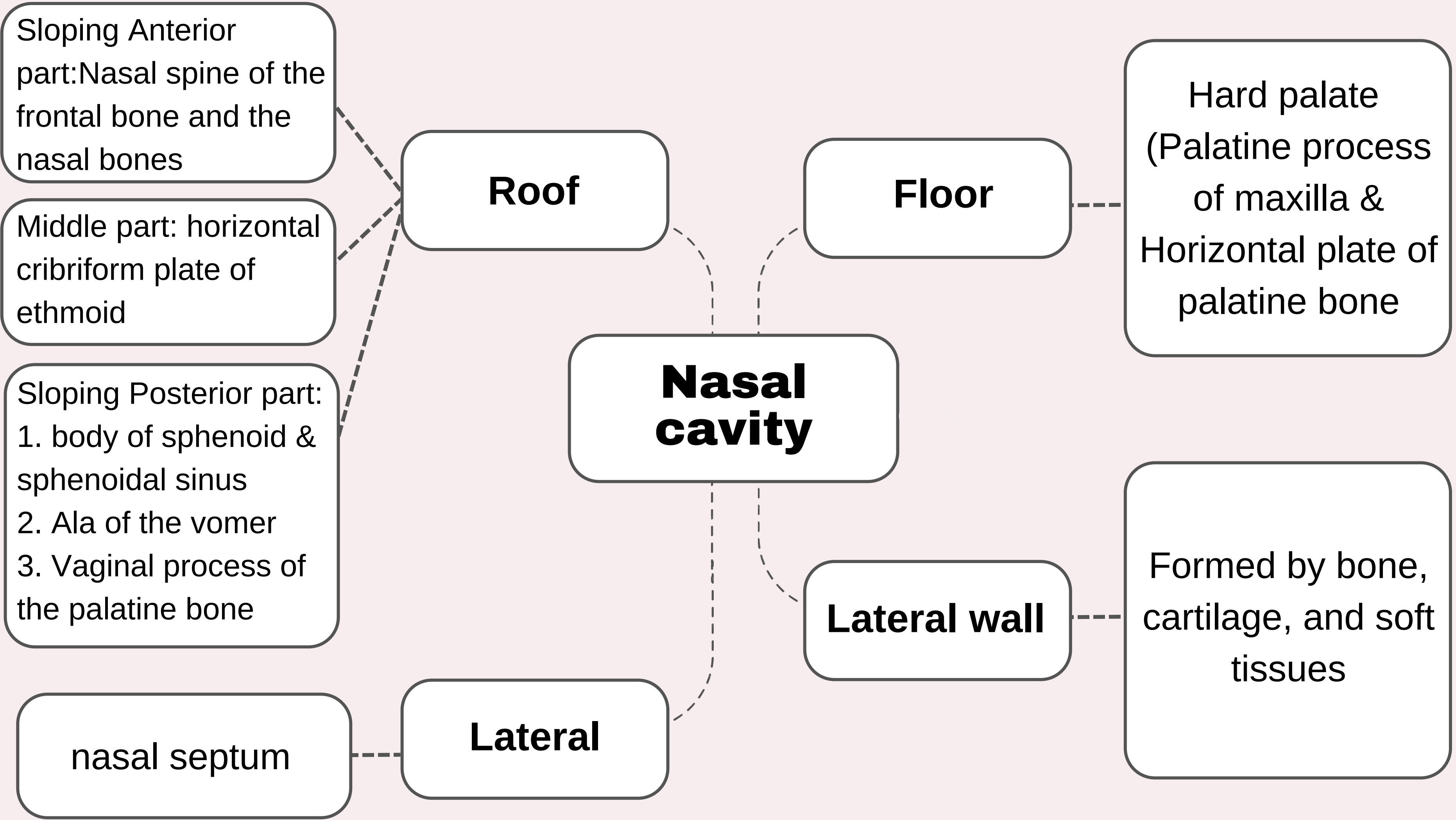
Pyramidal process of palatine bone

Horizontal plate of palatine bone

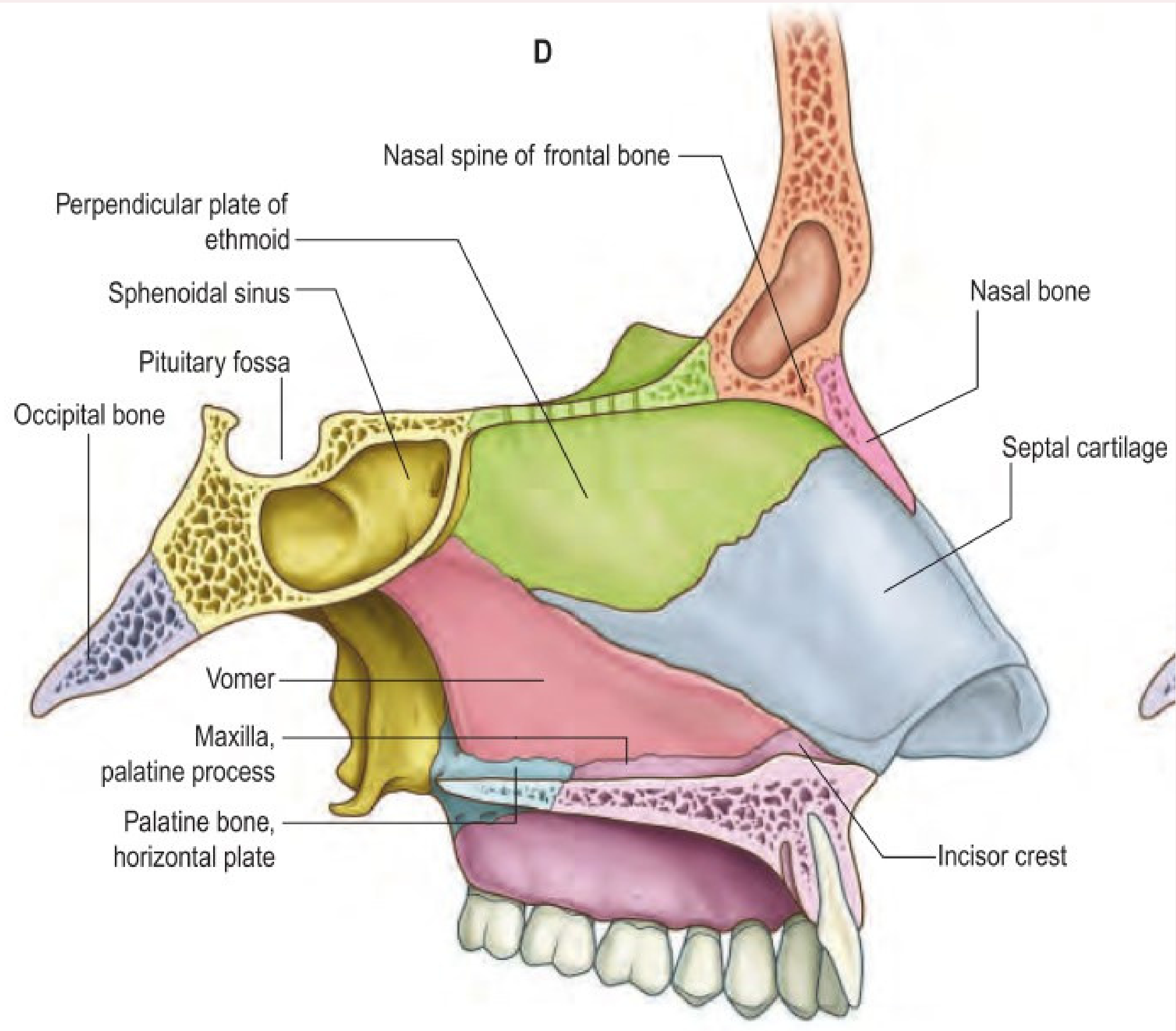
Choanae

Pterygoid hamulus





D



Ethmoidal
labyrinth and its
uncinated process

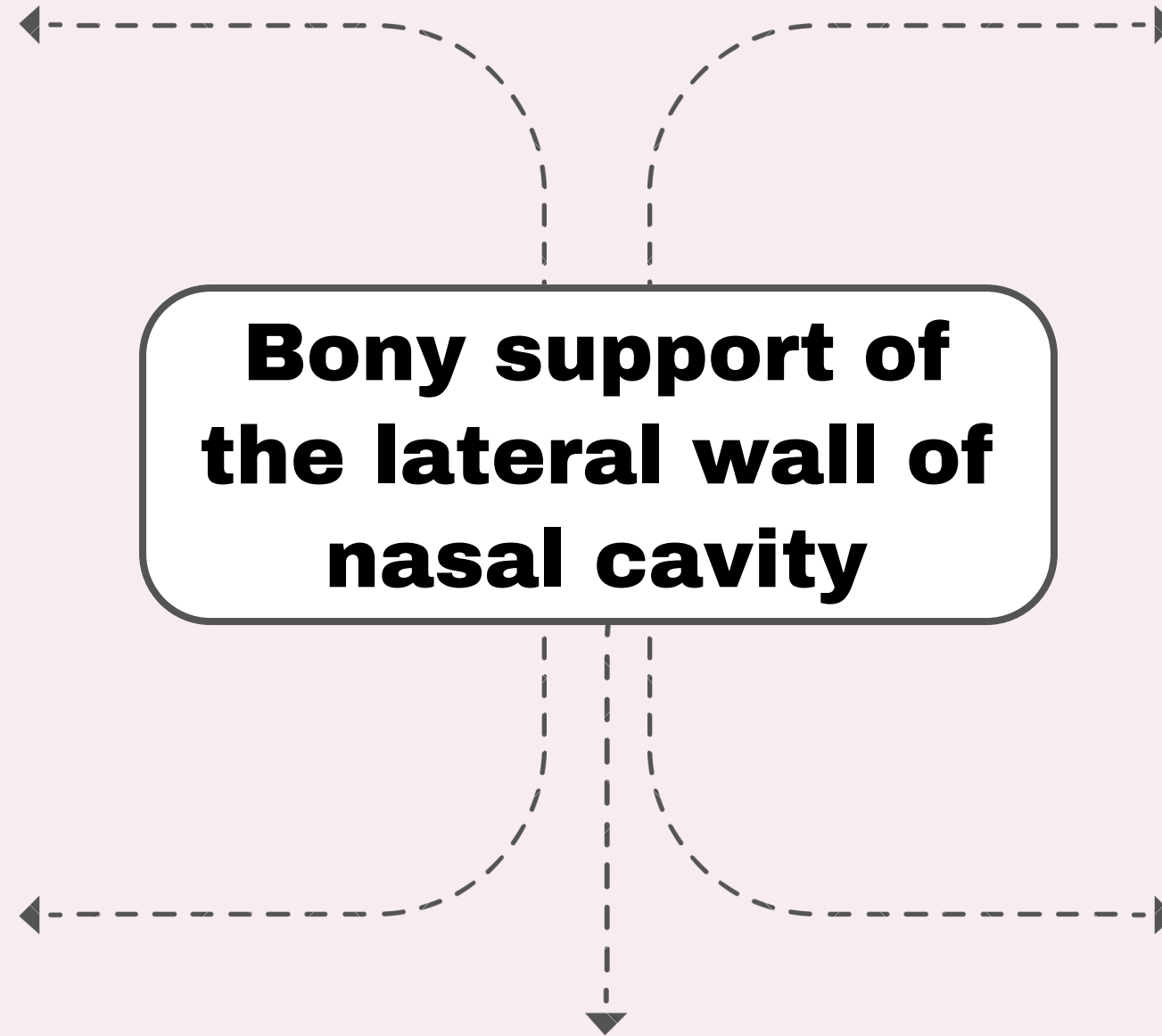
Medial plate of the
pterygoid process

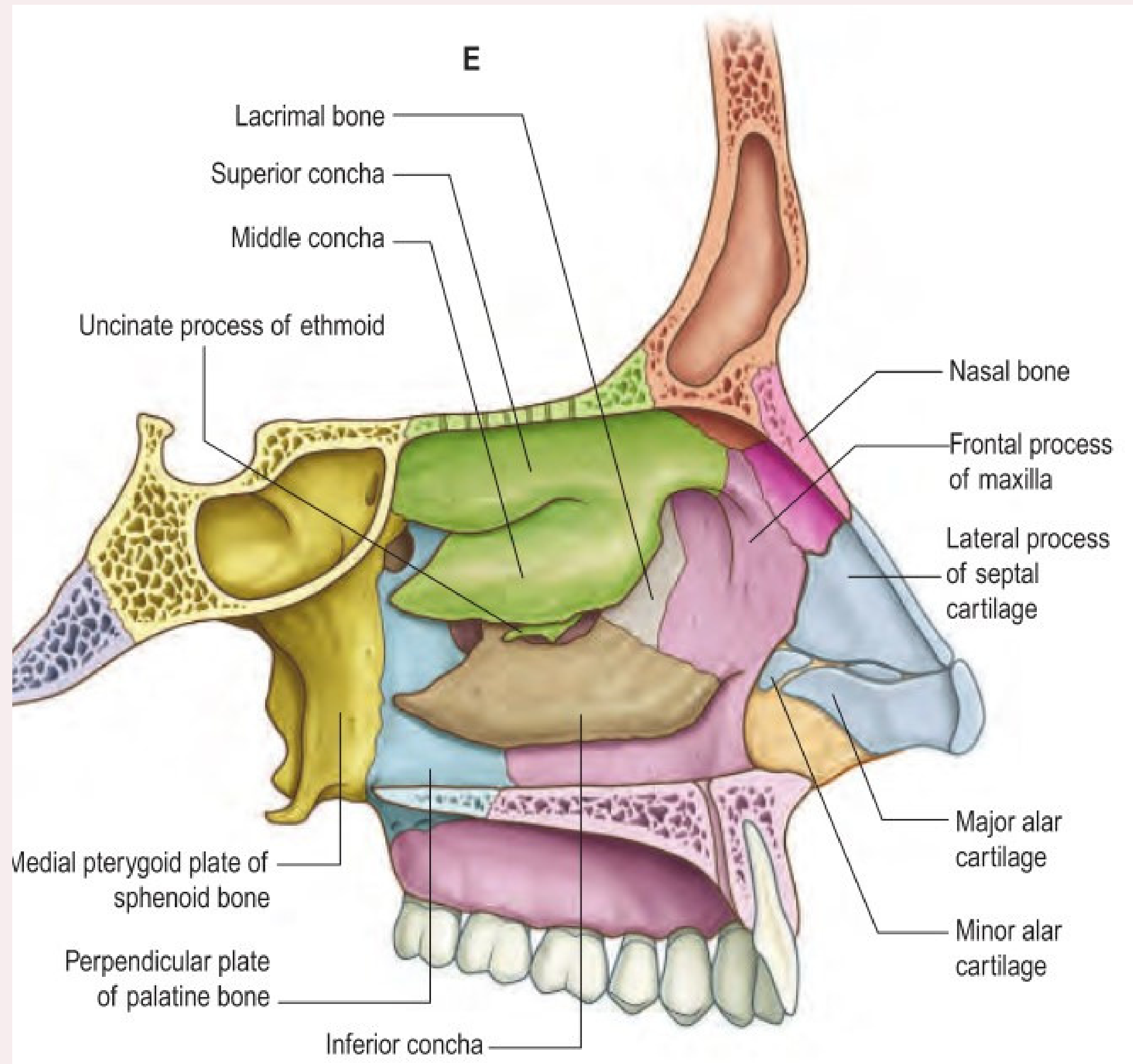
**Bony support of
the lateral wall of
nasal cavity**

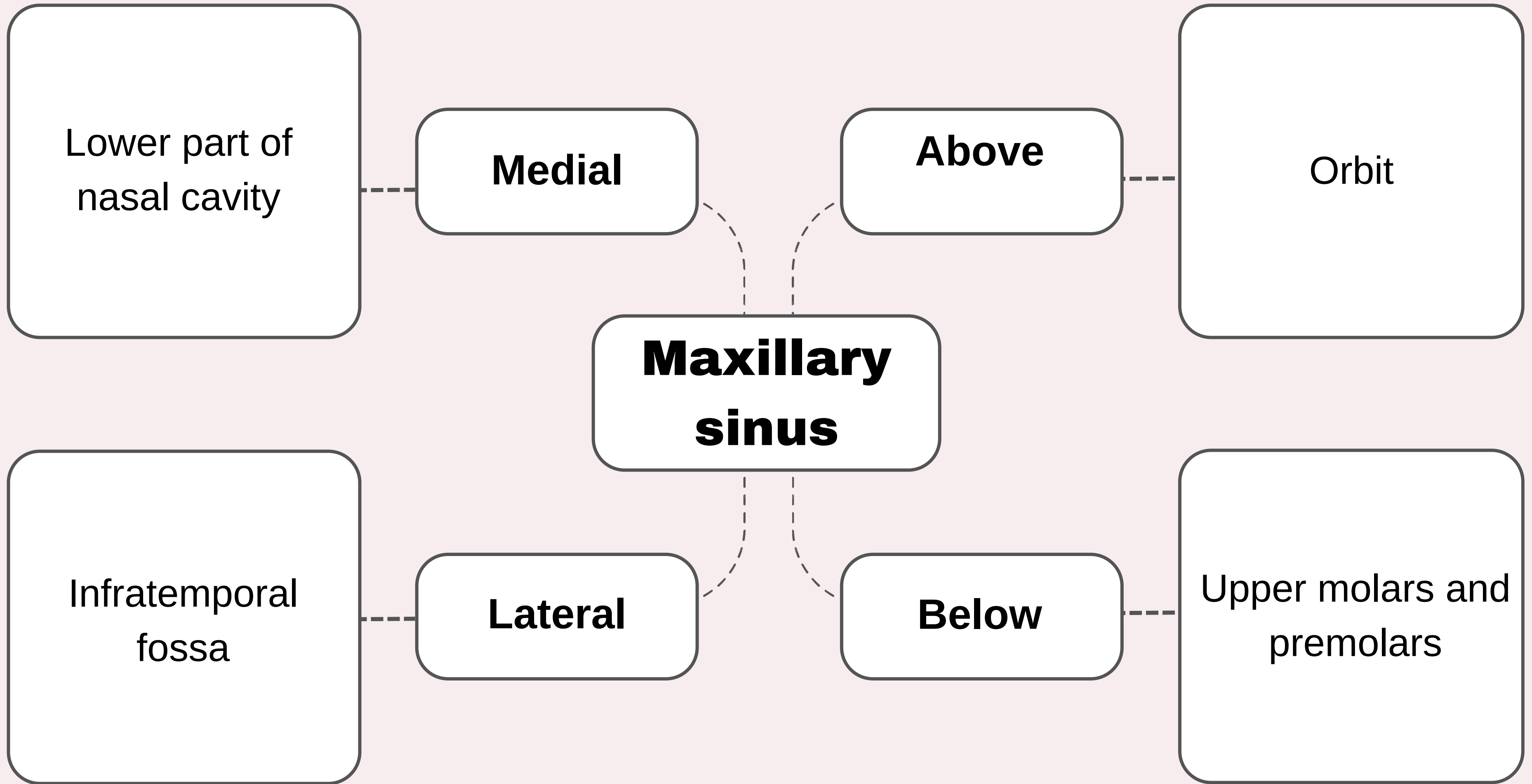
Perpendicular
plate of the
palatine bone

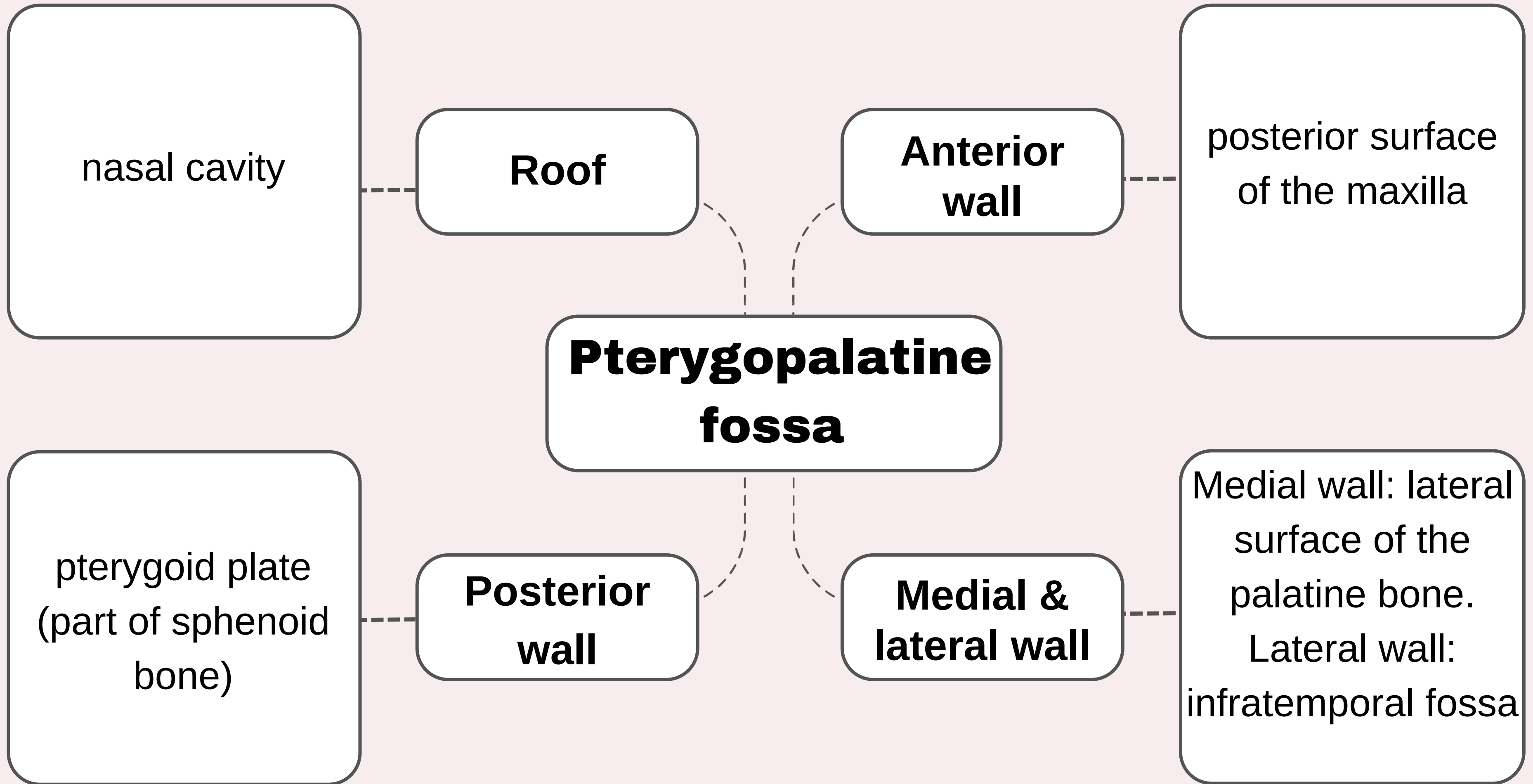
Medial surfaces of
the lacrimal bones
and maxillae

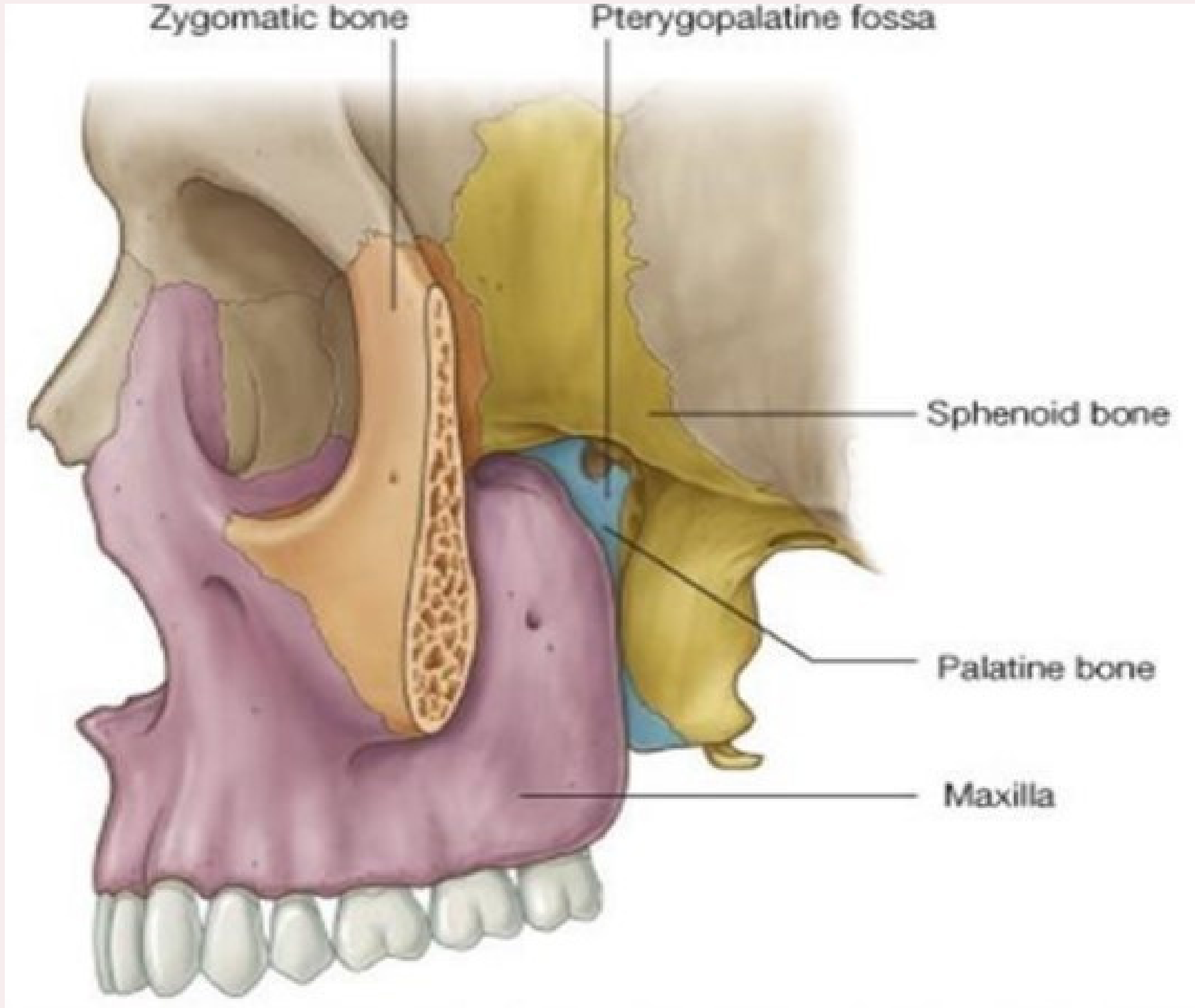
Inferior concha of maxilla











In the midline formed by a mucosal fold that forms depression (inter-arytenoid notch) between the two corniculate tubercles

Posterior border

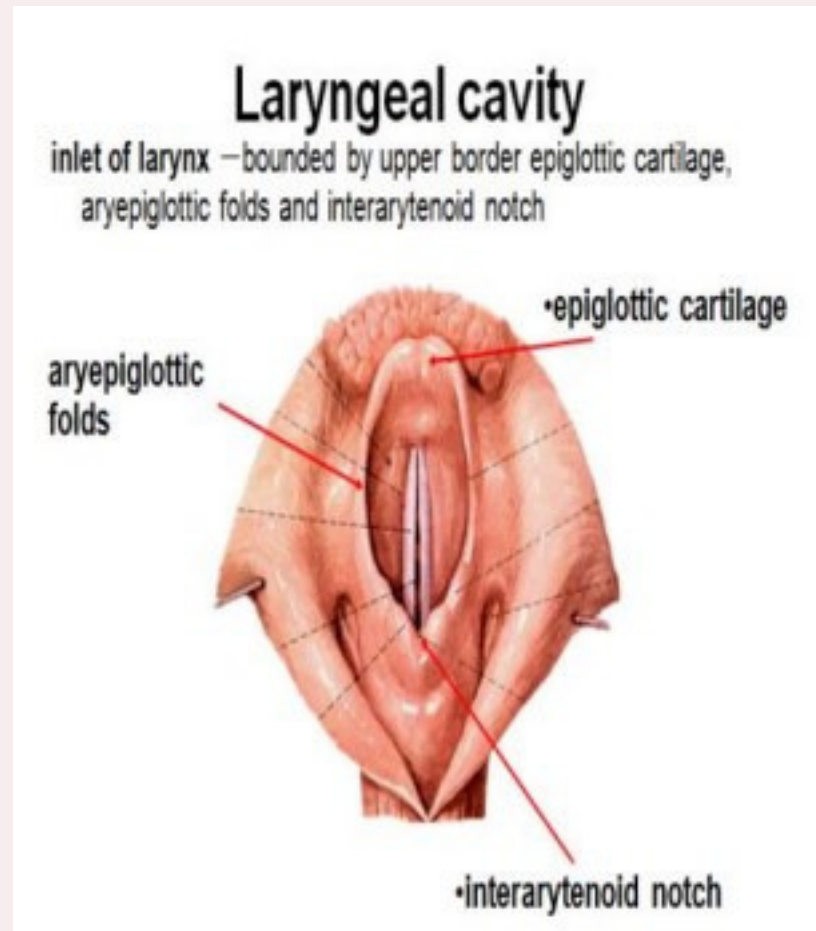
Anterior border

Formed by mucosa covering the superior margin of the epiglottis

Borders of the laryngeal inlet

Lateral borders

Formed by mucosal folds (aryepiglottic folds)



Skin, fascia and 4
infrahyoid muscles

Anteriorly

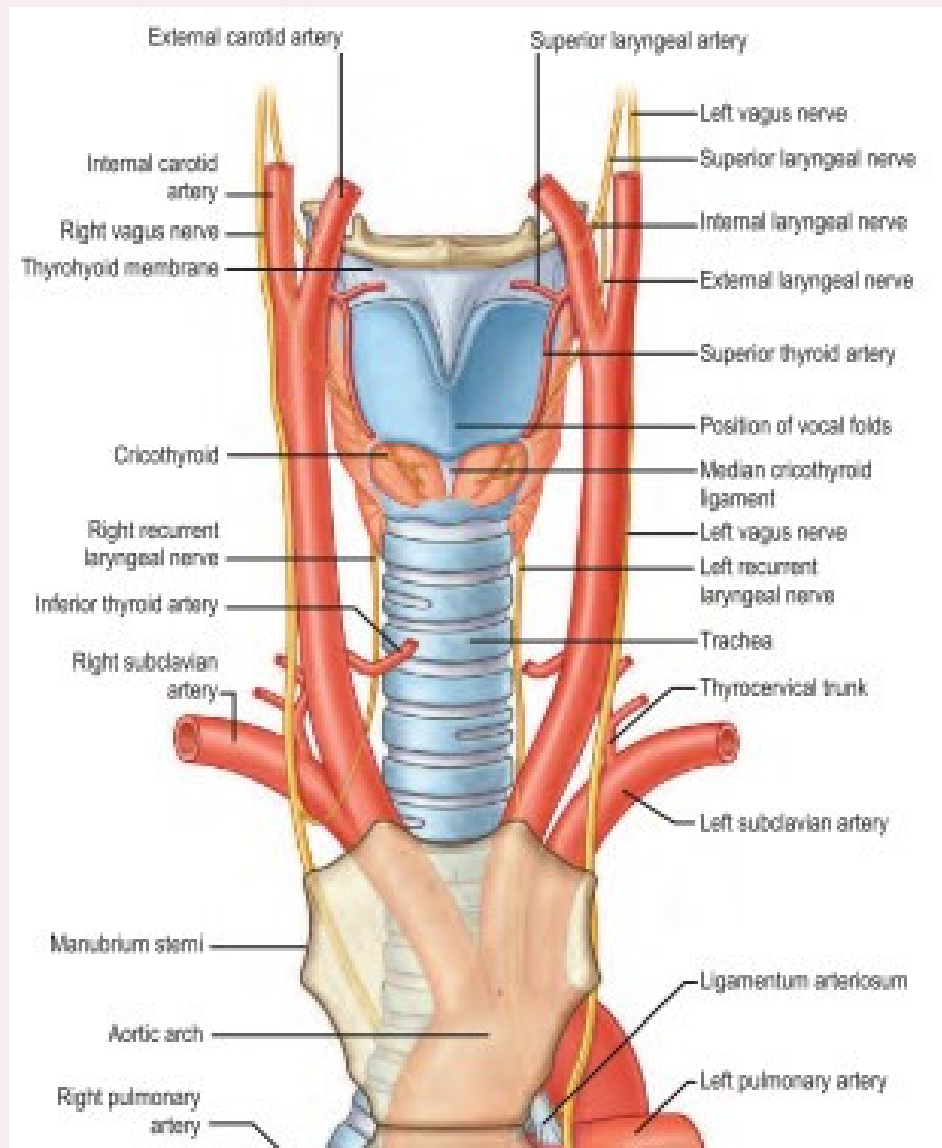
Laterally

The carotid sheath
and its contents &
In addition to the
lateral lobes of
thyroid

larynx

Posterior

Pharynx and right
recurrent laryngeal
nerve



- 1. Esophagus
- 2. left recurrent laryngeal nerve
- 3. Thoracic duct

Posterior

Anterior

- 1. Aortic arch
- 2. Thymus gland
- 3. Thyroid gland
- 4. The origin of brachiocephalic artery
- 5. Manubrium sterni

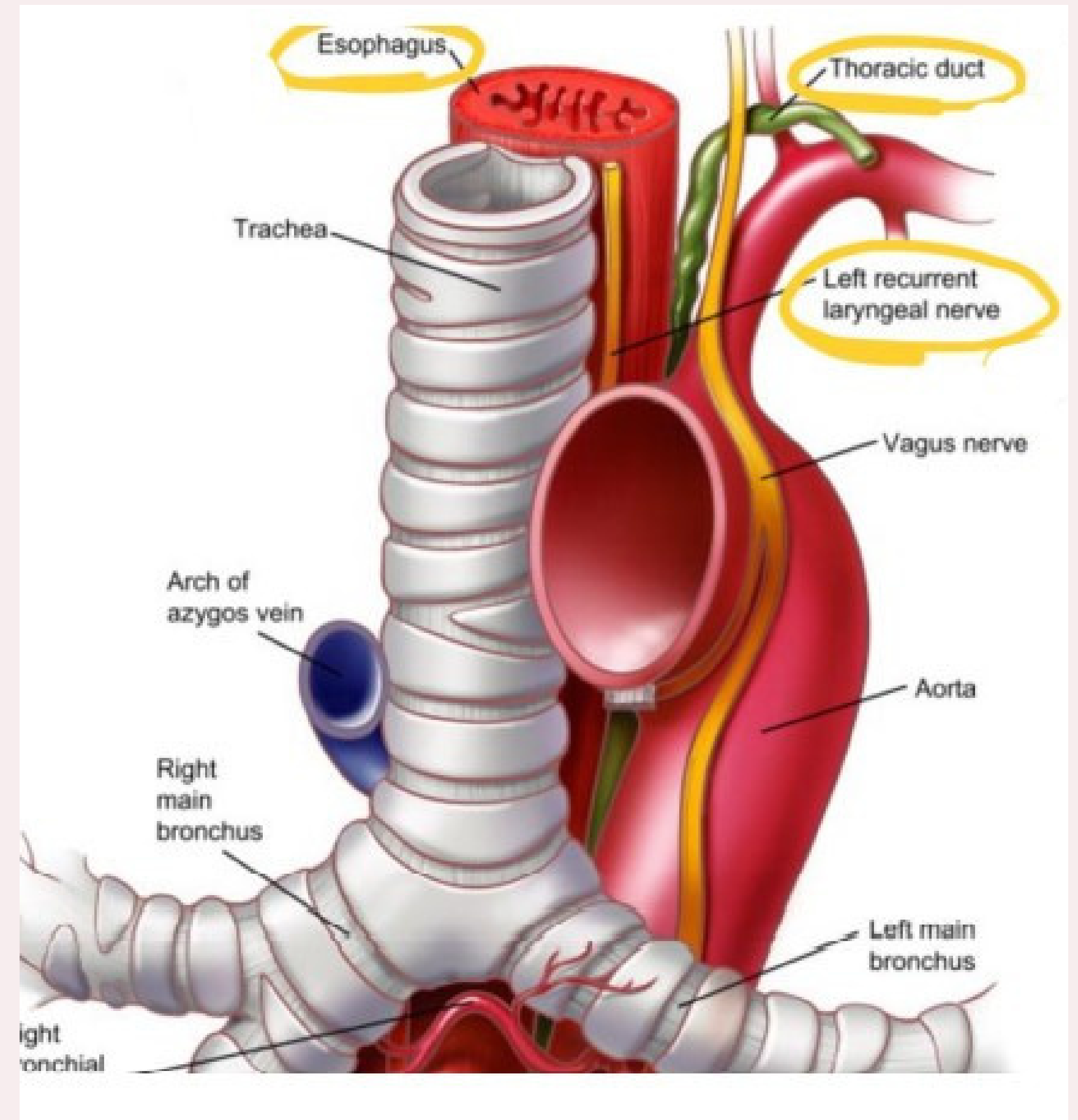
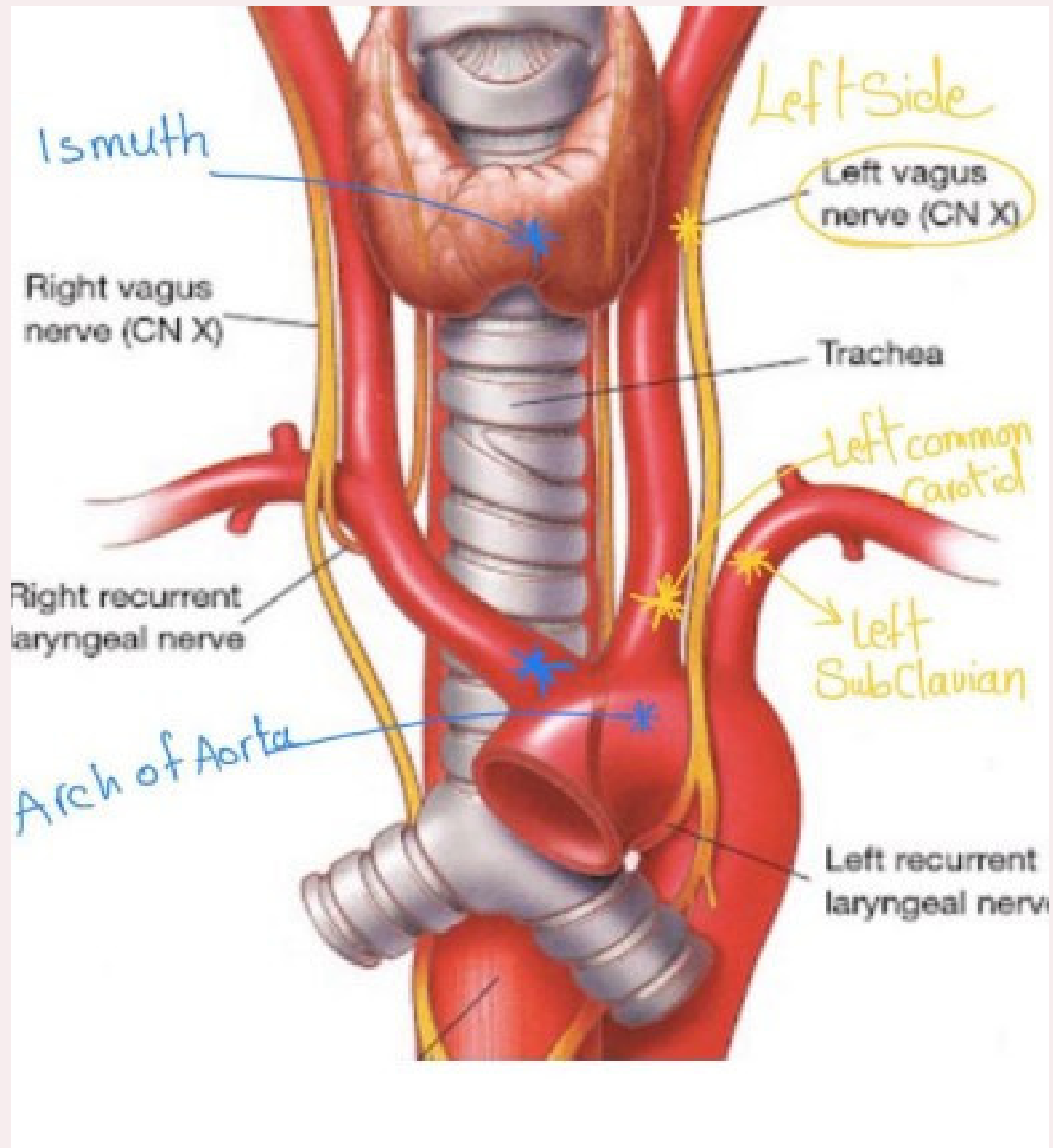
Trachea

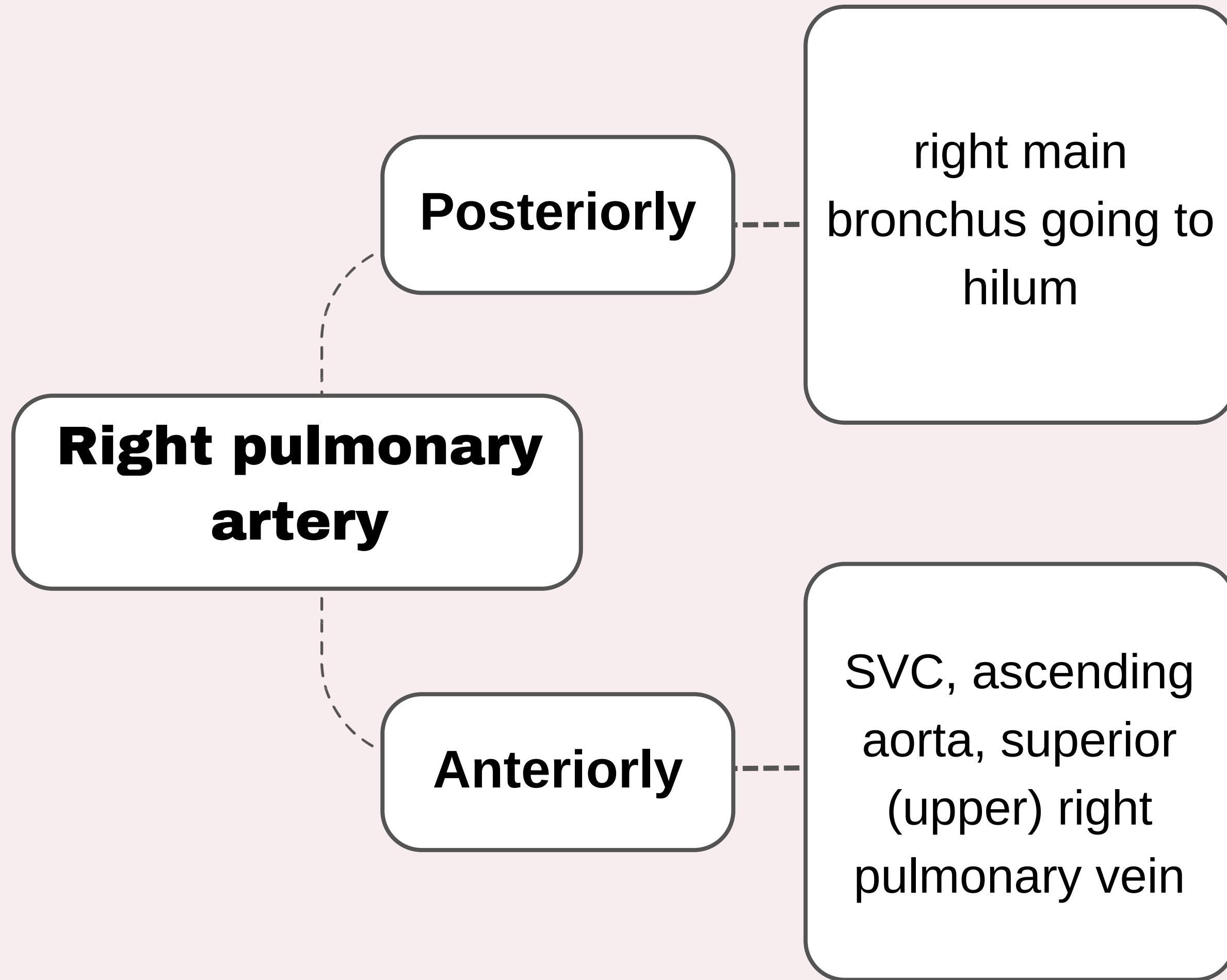
- 1. Azygous arch
- 2. Brachiocephalic artery
- 3. Right vagus nerve
- 4. Right phrenic nerve
- 5. Right phrenic nerve
- 6. Right main bronchus

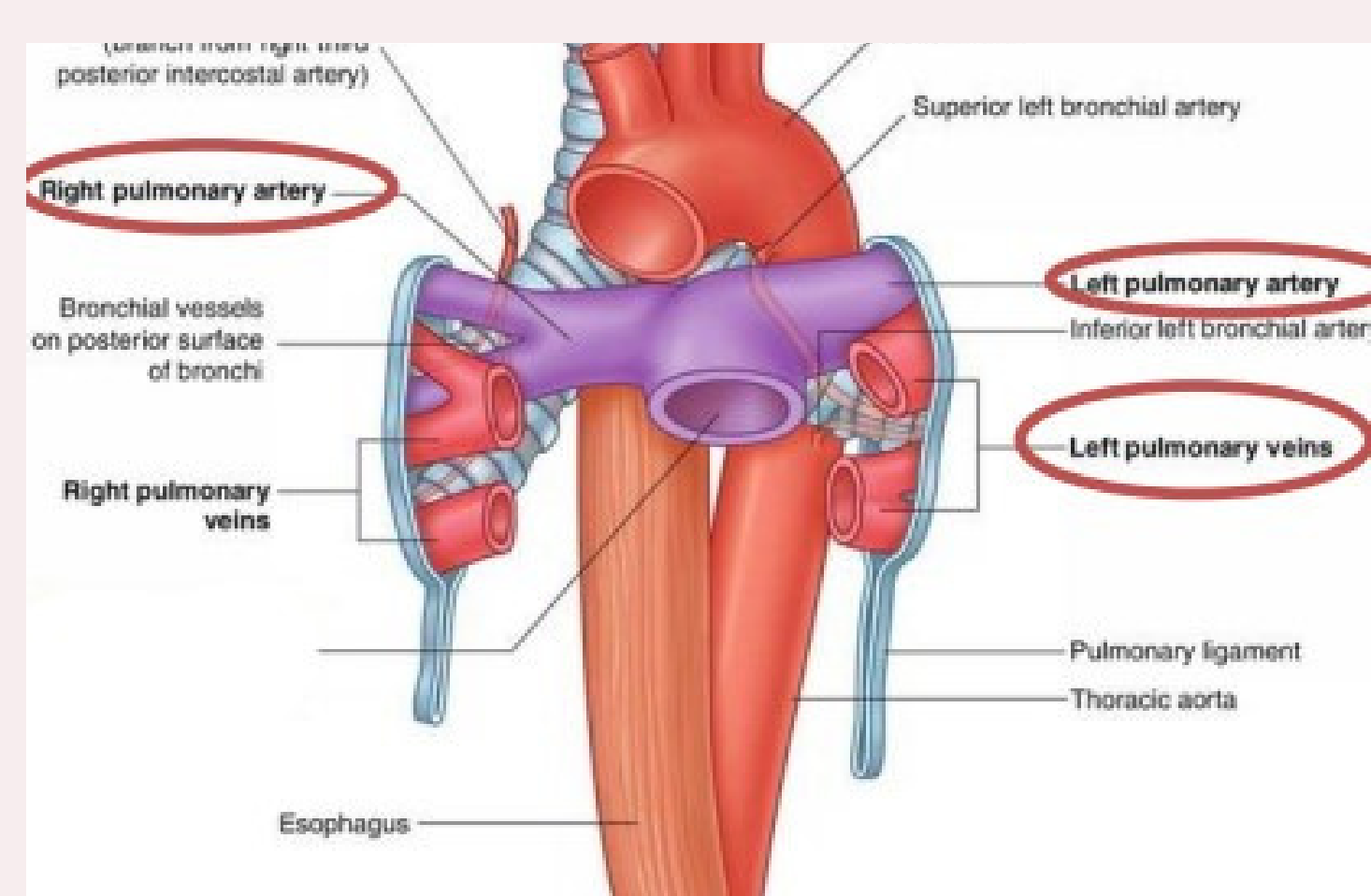
Right

Left

- 1. Aortic arch
- 2. Left subclavian artery.
- 3. Left common carotid artery
- 4. Left vagus nerve
- 5. Left phrenic nerve
- 6. Left main bronchus







Posteriorly

descending
aorta

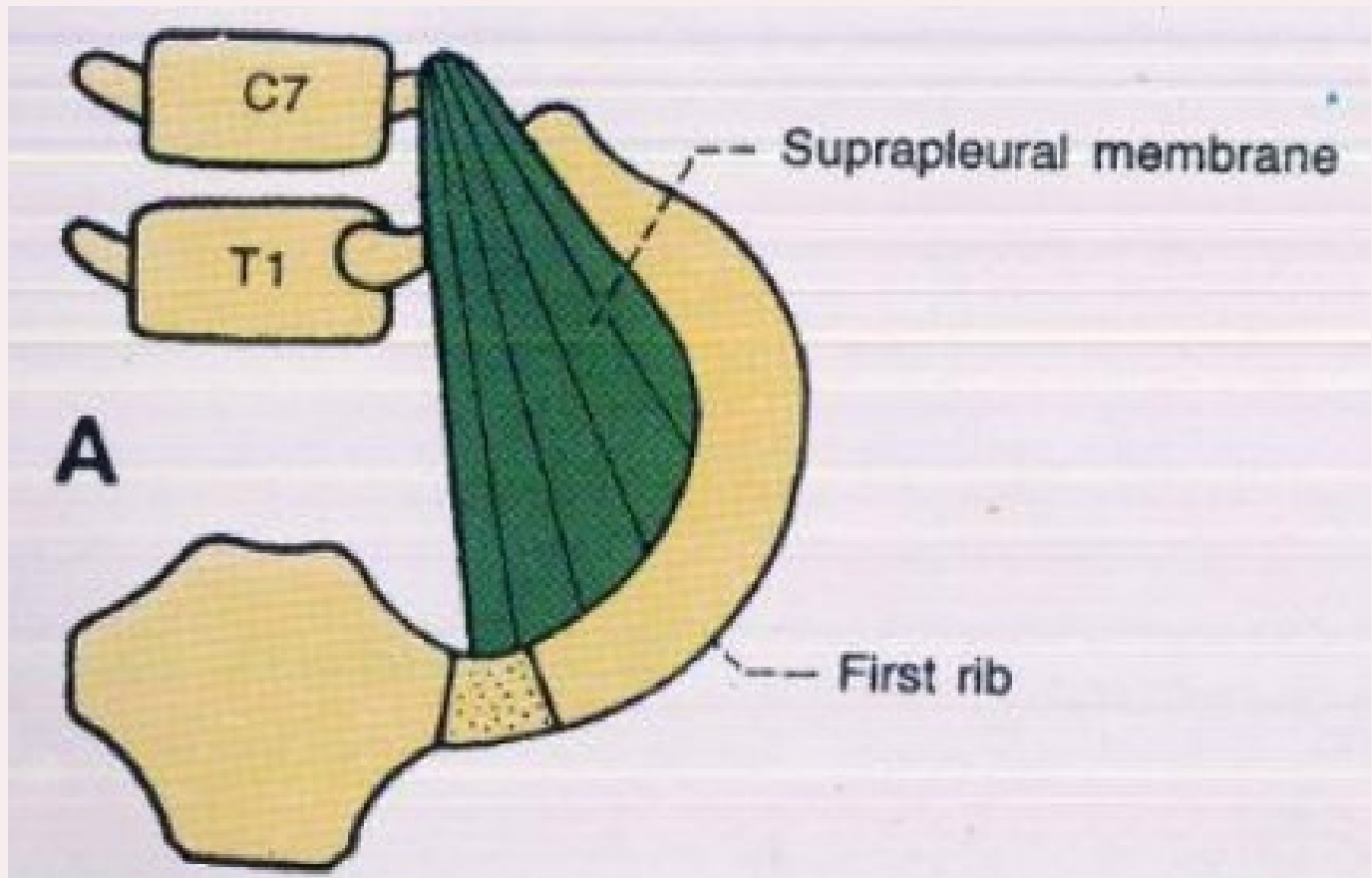
**left
pulmonary
artery**

Left main
bronchus

Inferiorly

Anteriorly

superior
pulmonary vein



Suprapleural membrane

Lateral

the medial (inner) border of first rib and costal cartilage

attached to the transverse process of C7

Superiorly

Medial

blends with the deep or the investing fascia or Sibson's fascia of the neck