

Microbiology of Gastrointestinal system

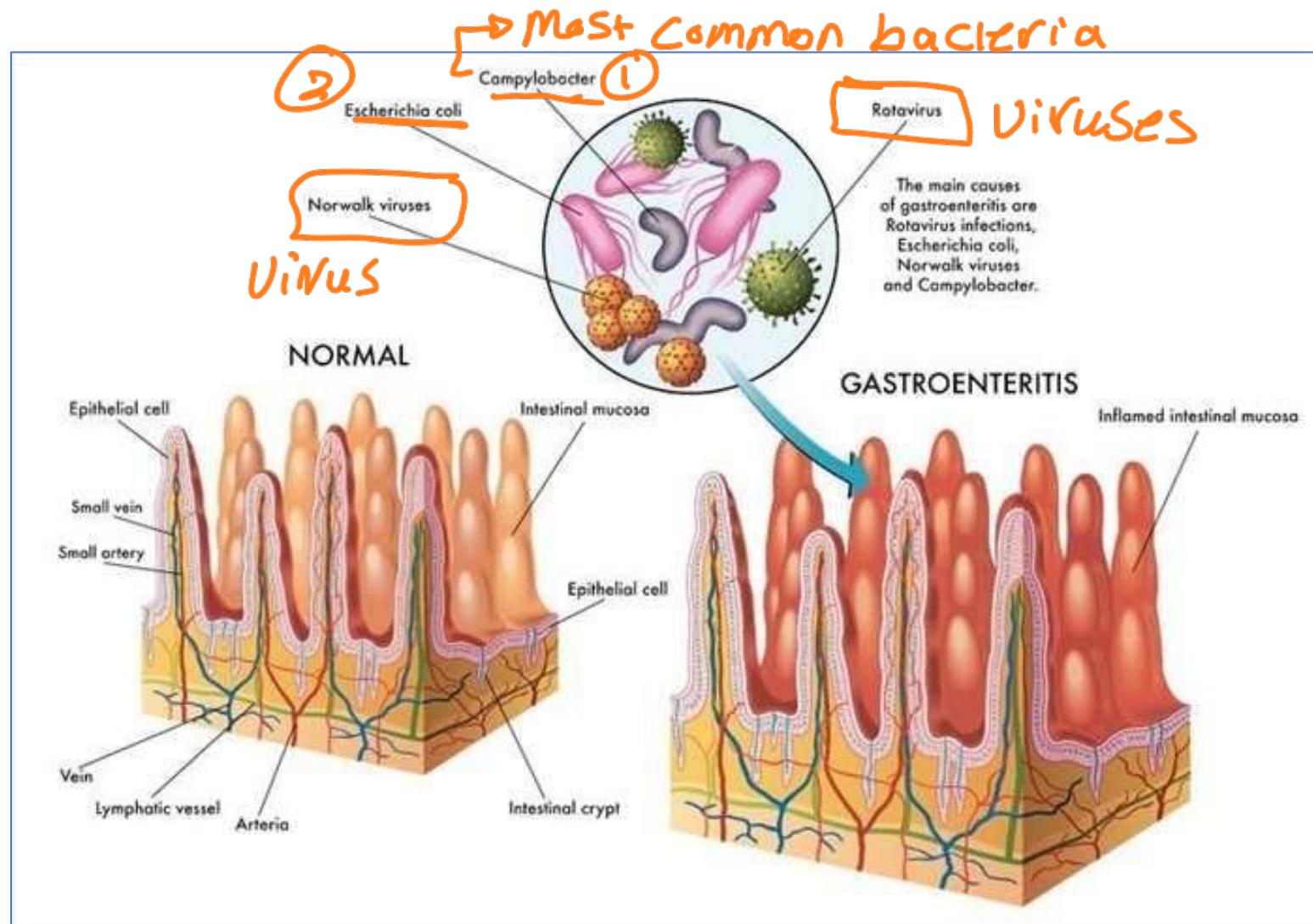
Edited By : Huda Baidoun
Corrected by:Huda Baidoun



Anas Abu-Humaidan
M.D. Ph.D.

Viral gastroenteritis

- **Gastroenteritis** is inflammation of the gastrointestinal tract—the stomach and small intestine. Most common cause of gastroenteritis
- Can be caused by **viruses**, bacteria, fungi and parasites.
- Mostly **infectious**, rather than **non-infectious** (caused by drugs, certain foods, etc..). NSAIDS Gluten Aallergy
- Gastroenteritis is characterized by **vomiting** and **diarrhea**.



- Kapikian, A.Z.; Wyatt, R.G.; Dolin, R.; Thornhill, T.S.; Kalica, A.R.; Chanock, R.M. **Visualization by immune electron microscopy of a 27-nm particle associated with acute infectious nonbacterial gastroenteritis.** J. Virol. **1972**, 10, 1075–1081. [PubMed]
- Bishop, R.F.; Davidson, G.P.; Holmes, I.H.; Ruck, B.J. **Virus particles in epithelial cells of duodenal mucosa from children with acute non-bacterial gastroenteritis.** Lancet 1973, 2, 1281–1283. [CrossRef]
- Madeley, C.R.; Cosgrove, B.P. Letter: **28 nm particles in faeces in infantile gastroenteritis.** Lancet **1975**, 2, 451–452. [CrossRef]
- Morris, C.A.; Flewett, T.H.; Bryden, A.S.; Davies, H. **Epidemic viral enteritis in a long-stay children's ward.** Lancet **1975**, 1, 4–5. [PubMed]

They discovered that viruses can cause gastroenteritis

Visualization by Immune Electron Microscopy of a 27-nm Particle Associated with Acute Infectious Nonbacterial Gastroenteritis

ALBERT Z. KAPIKIAN, RICHARD G. WYATT, RAPHAEL DOLIN, THOMAS S. THORNHILL,
ANTHONY R. KALICA, AND ROBERT M. CHANOCK

*Laboratory of Infectious Diseases, National Institute of Allergy and Infectious Diseases,
National Institutes of Health, Bethesda, Maryland 20014*

Received for publication 3 August 1972

A 27-nm particle was observed by immune electron microscopy in an infectious stool filtrate derived from an outbreak in **Norwalk, Ohio**, of acute infectious nonbacterial gastroenteritis. Both experimentally and naturally infected individuals developed serological evidence of infection; **this along with other evidence suggested that the particle was the etiological agent of Norwalk gastroenteritis.**

Now it is called Noro
viruses

Caliciviruses

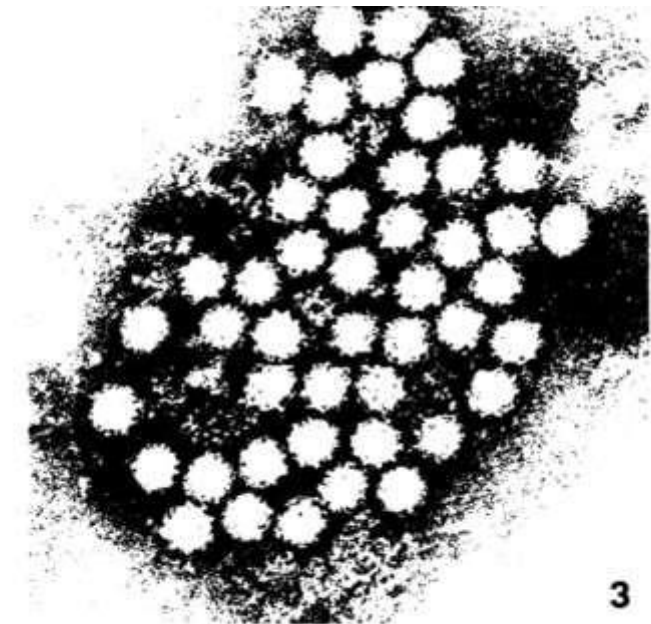


FIG. 3. An aggregate observed after incubation of the stool filtrate with a 1:5 dilution of prechallenge antiserum of volunteer A. The quantity of antibody on these glistening particles was scored as 1+. $\times 231,500$.

Viral gastroenteritis / etiology

TABLE 98-1

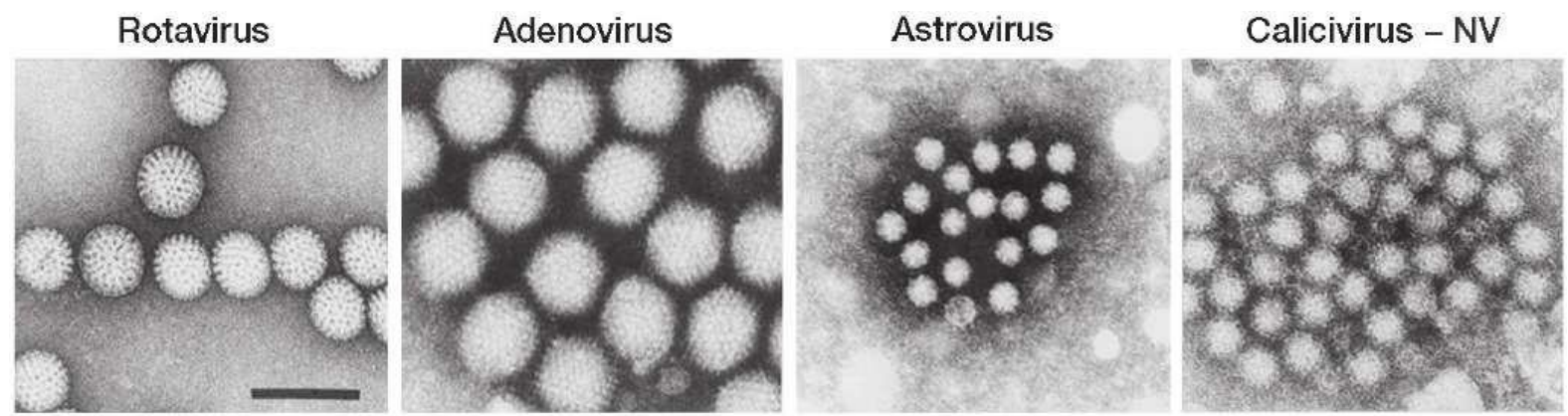
VIRAL CAUSES OF GASTROENTERITIS AMONG HUMANS

Two most important

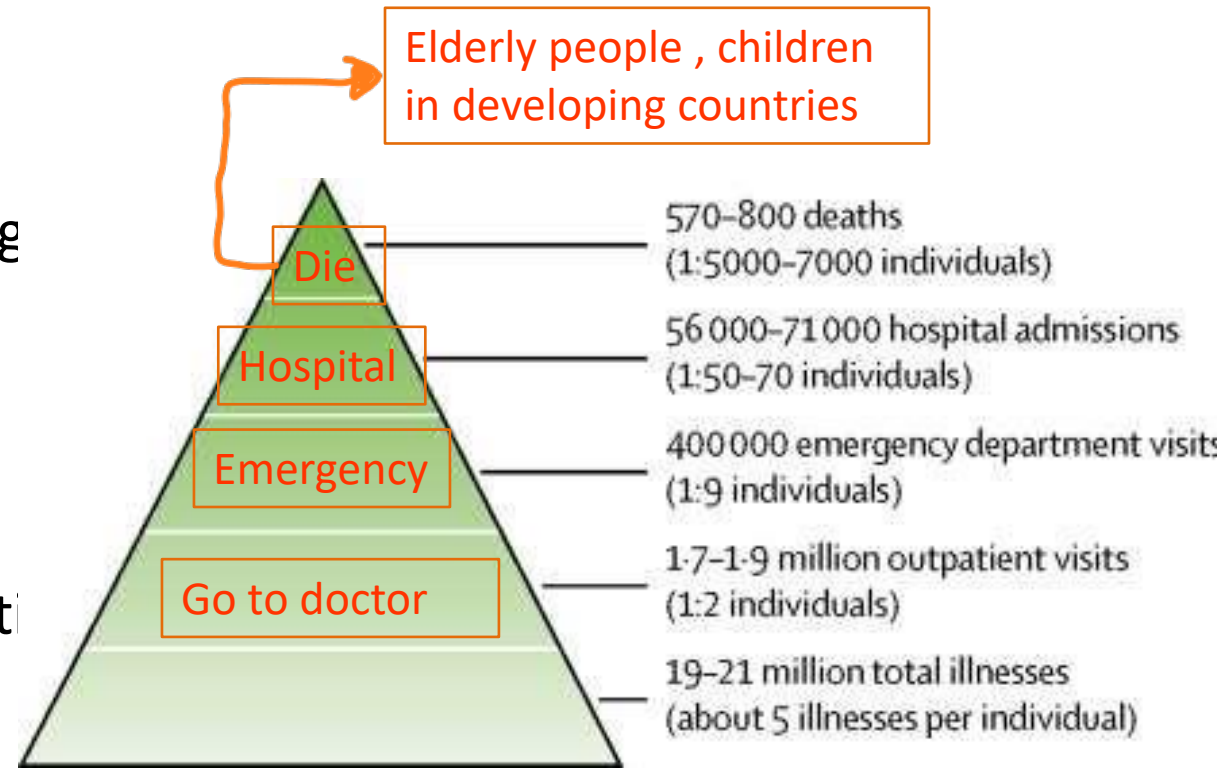
VIRUS	FAMILY	GENOME	PRIMARY AGE GROUP AT RISK	CLINICAL SEVERITY	DETECTION ASSAYS
Group A rotavirus	Reoviridae	Double-strand segmented RNA	Children <5 years	+++	EM, EIA (commercial), PAGE, RT-PCR
Norovirus	Caliciviridae	Positive-sense single-strand RNA	All ages	++	EM, RT-PCR
Sapovirus	Caliciviridae	Positive-sense single-strand RNA	Children <5 years	+	EM, RT-PCR
Astrovirus	Astroviridae	Positive-sense single-strand RNA	Children <5 years	+	EM, EIA, RT-PCR
Adenovirus (mainly types 40 and 41)	Adenoviridae	Double-strand DNA	Children <5 years	+ / + +	EM, EIA (commercial), PCR

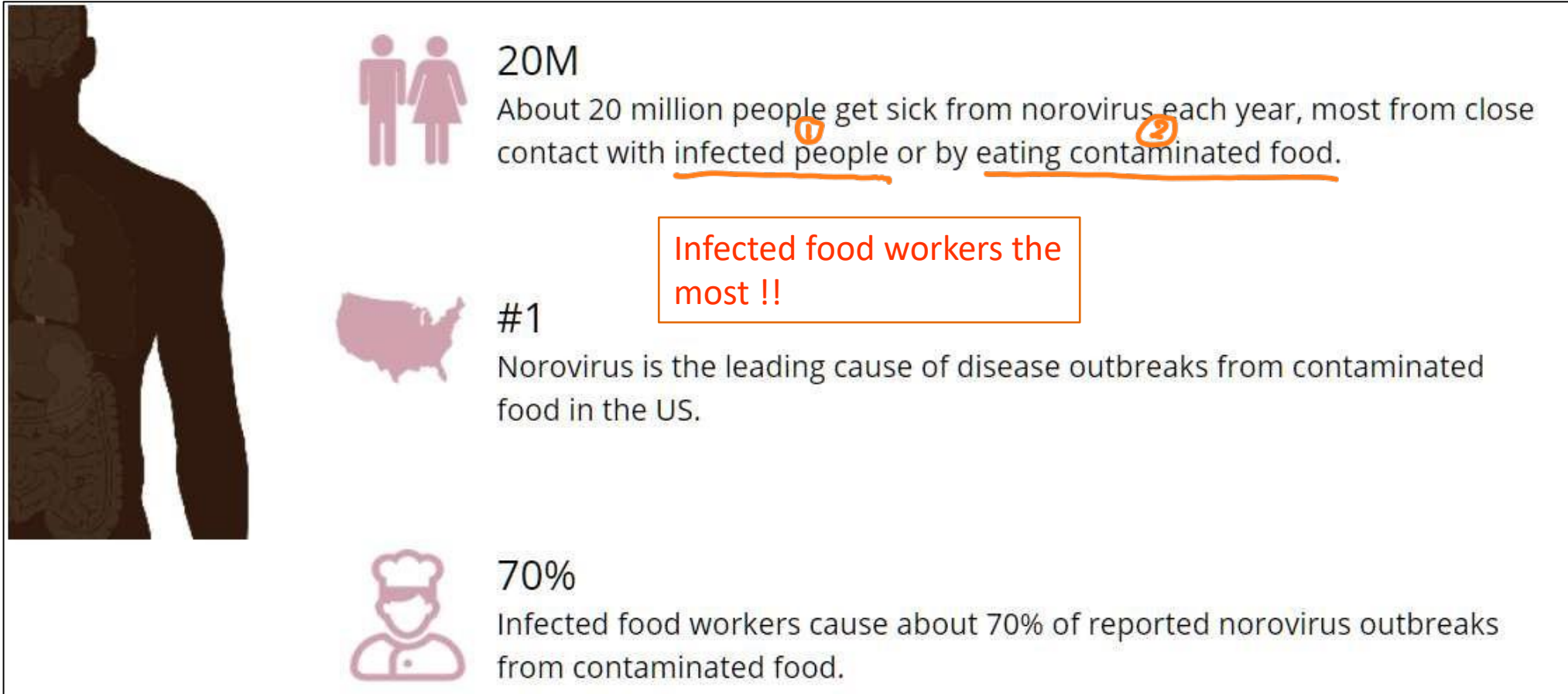
All RNA viruses except adenoviruse

Abbreviations: EIA, enzyme immunoassay; EM, electron microscopy; PAGE, polyacrylamide gel electrophoresis; PCR, polymerase chain reaction; RT-PCR, reverse-transcription PCR.



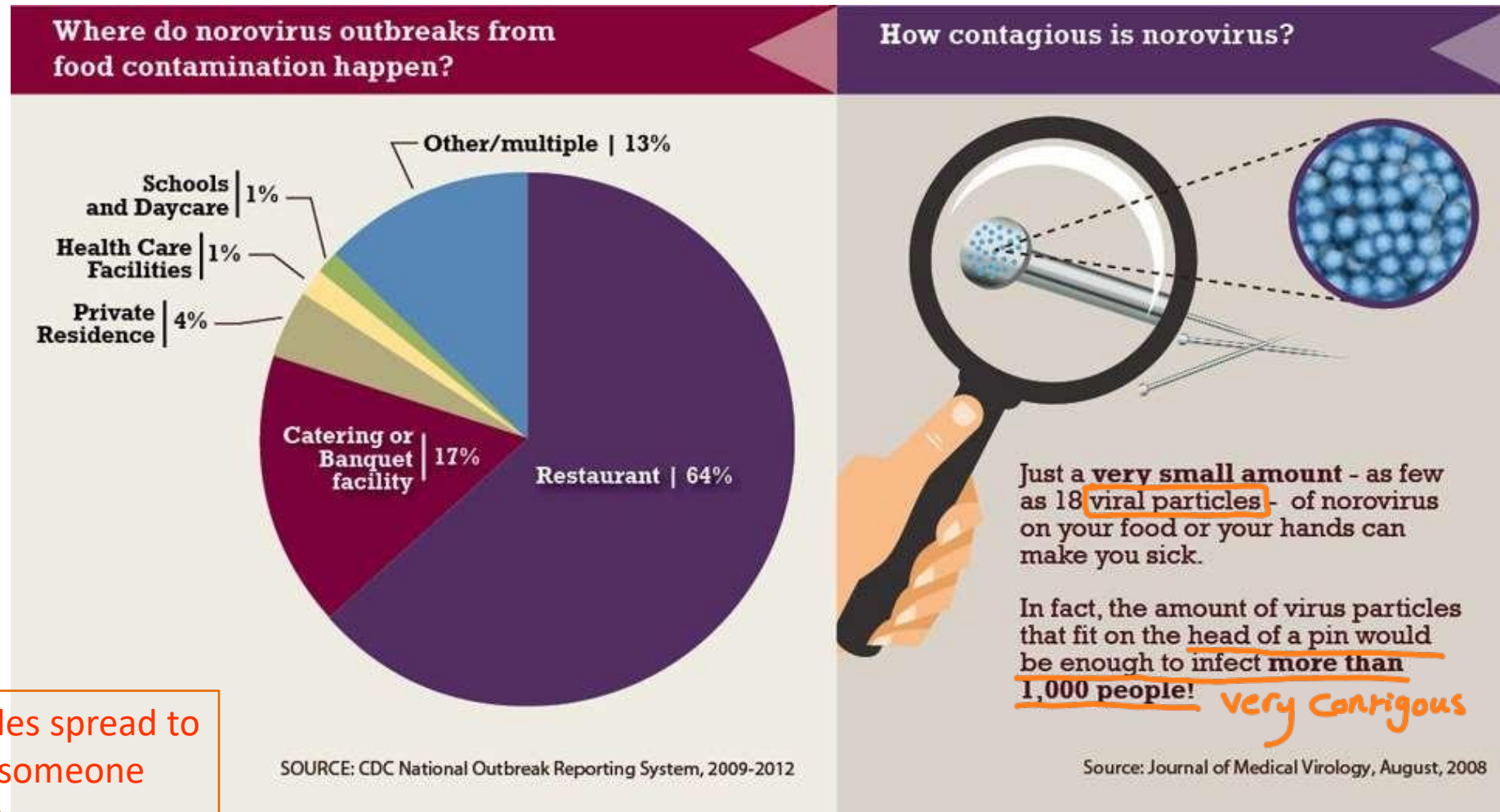
- Acute infectious gastroenteritis is a common illness that affects persons of **all ages worldwide**.
- It is a leading cause of mortality among **children** in developing countries, accounting for an estimated 0.7 million deaths each year, and is responsible for up to 10–12% of all hospitalizations among children in industrialized countries.
- **Elderly** persons, especially those with debilitating health conditions, also are at risk of severe complications and death from acute gastroenteritis.
- Among healthy **young adults**, acute gastroenteritis is rarely fatal. If not managed with rehydration





- Infections with the Norwalk and related human caliciviruses are common worldwide, and **most adults have antibodies to these viruses.**

Viral gastroenteritis / transmission / Noroviruses



Virus particles spread to the air and someone inhale them

If you touch the vomit

- Virus is transmitted predominantly by the **fecal-oral route** but is also present in **vomit**. Because an inoculum with **very few viruses can be infectious**, transmission can occur by **aerosolization**, by contact with **contaminated fomites**, and by **person-to-person contact**.

Small inoculum !!!

Touch things

Shake hands

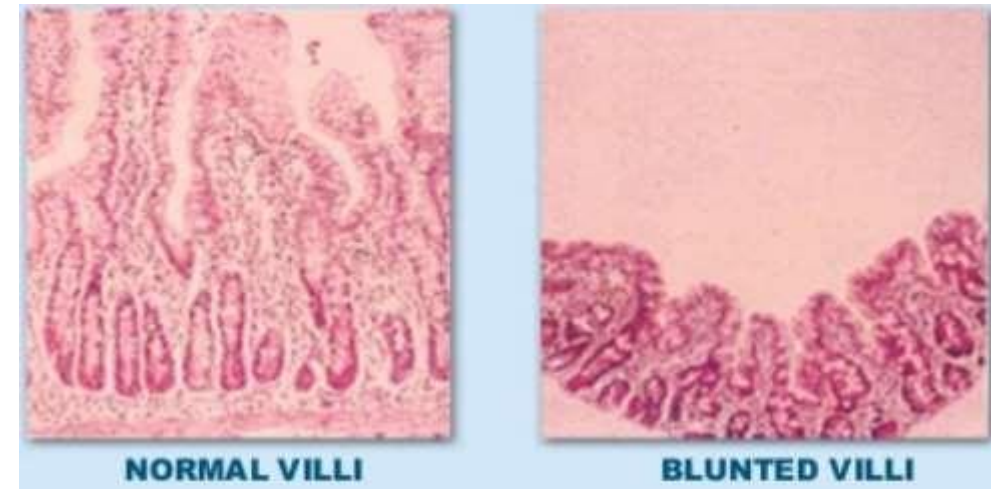
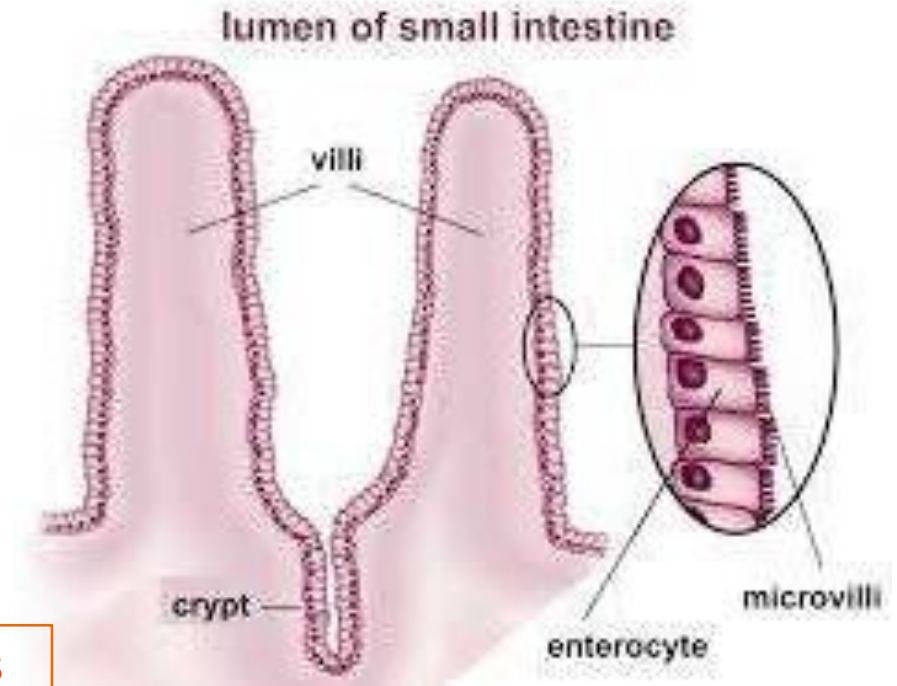
Viral gastroenteritis / pathogenesis / Noroviruses

Carbohydrates of blood groups (which means some people are more susceptible than others)

- Carbohydrates present on the gastroduodenal epithelium may serve as ligands for the attachment of Norwalk virus.
- lesions are noted in the upper jejunum, with broadening and blunting of the villi, shortening of the microvilli, vacuolization of the lining epithelium, crypt hyperplasia, and infiltration of the lamina propria by polymorphonuclear neutrophils and lymphocytes.
- No histopathologic changes are seen in the stomach or colon usually.

Less absorption

More secretions



Normal villi

Short and not pointy

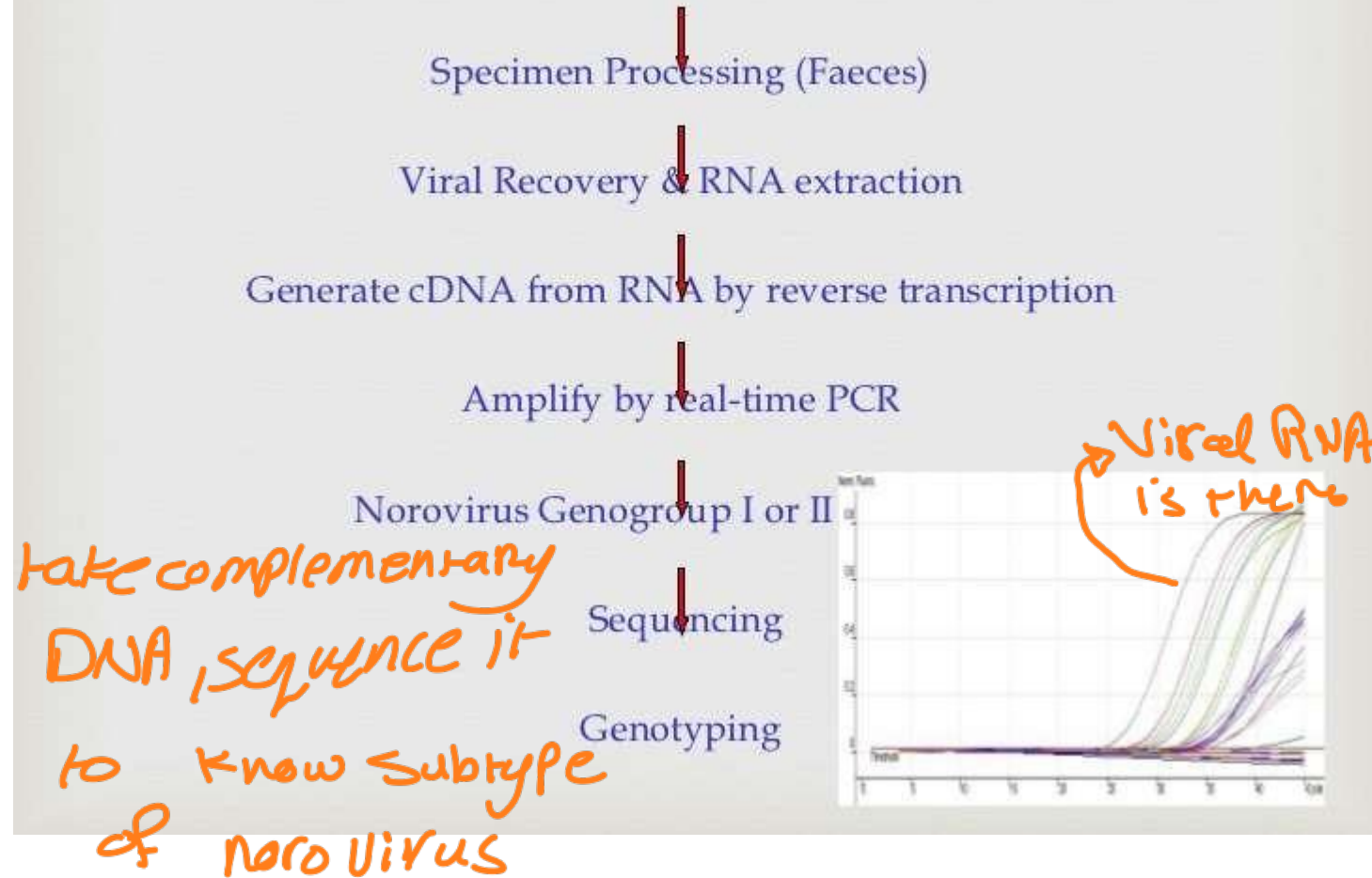
- Gastroenteritis caused by Norwalk and related human caliciviruses has a **sudden onset** following an average **incubation period of 24 h**.
Short duration
- The illness generally lasts 12–60 h and is characterized by one or more of the following symptoms: **nausea, vomiting, abdominal cramps, and diarrhea**.
- Vomiting is more prevalent among children, whereas a greater proportion of adults develop diarrhea.
- **Constitutional symptoms** are **common**, including headache, fever, chills, and myalgias.
- The stools are characteristically loose and watery, without blood, mucus, or leukocytes

**Can use electron microscopy for research purposes NOT diagnosis

- Cloning and sequencing of the genomes of Norwalk and several other human caliciviruses have allowed the development of assays based on **polymerase chain reaction (PCR)** or detection of virus in stool and vomitus.
- **Enzyme immunoassays (EIAs)** for detection of Virus particles in stool can be used.
- No currently available single assay can detect all human caliciviruses because of their great genetic and antigenic diversity.

Exclusion first

Scheme for molecular detection of Norovirus



Oral

- The disease is **self-limited**, and oral **rehydration** therapy is generally adequate.
- If severe dehydration develops, **IV fluid** therapy is indicated.

AS they keep vomiting
- **No specific antiviral** therapy is available

Diarrhoea and vomiting?

There's no specific cure for **stomach bugs** such as Norovirus
Treat children at home with an #EssentialKit while the virus runs its course

The infographic is divided into four sections, each with an illustration and a text label below it:

- stay hydrated**: Illustration of a blue water bottle.
- take paracetamol**: Illustration of a brown bottle pouring red liquid into a spoon.
- prevent spread**: Illustration of a white tissue box with a pink bar of soap next to it.
- stay at home for two days after symptoms clear**: Illustration of a black handheld gaming console with a green screen showing the number '48' and the word 'HOURS'.

Fever/myalgia Good hygiene

- Epidemic prevention relies on situation-specific measures, such as **control of contamination of food and water, exclusion of ill food handlers**, and reduction of person-to-person spread through good **personal hygiene** and **disinfection of contaminated fomites**.

Ways to prevent norovirus outbreaks from food contamination

Kitchen managers should be trained and certified in food safety and ensure that all food service workers follow food safety practices outlined in the FDA model Food Code and CDC guidelines.



Abstract

أفرك عديني للمتابع / الشرح دسحت بالهورة والى

An outbreak of gastroenteritis followed a meal in a large hotel during which one of the diners vomited. The clinical features of the illness suggested Norwalk-like virus (NLV, small round structured virus) infection, and this was confirmed by electron microscopy and reverse transcriptase polymerase chain reaction (RT-PCR) of stool samples. Further characterization of the virus by nucleotide sequence analysis of the PCR amplicons revealed identical strains in all the affected individuals. The foods served at the meal could not be demonstrated to be the cause of the outbreak. Analysis of attack rates by dining table showed an inverse relationship with the distance from the person who vomited. No one eating in a separate restaurant reported illness. Transmission from person-to-person or direct contamination of food seems unlikely in this outbreak. However, the findings are consistent with airborne spread of NLV with infection by inhalation with subsequent ingestion of virus particles.

Aerosolization!!!

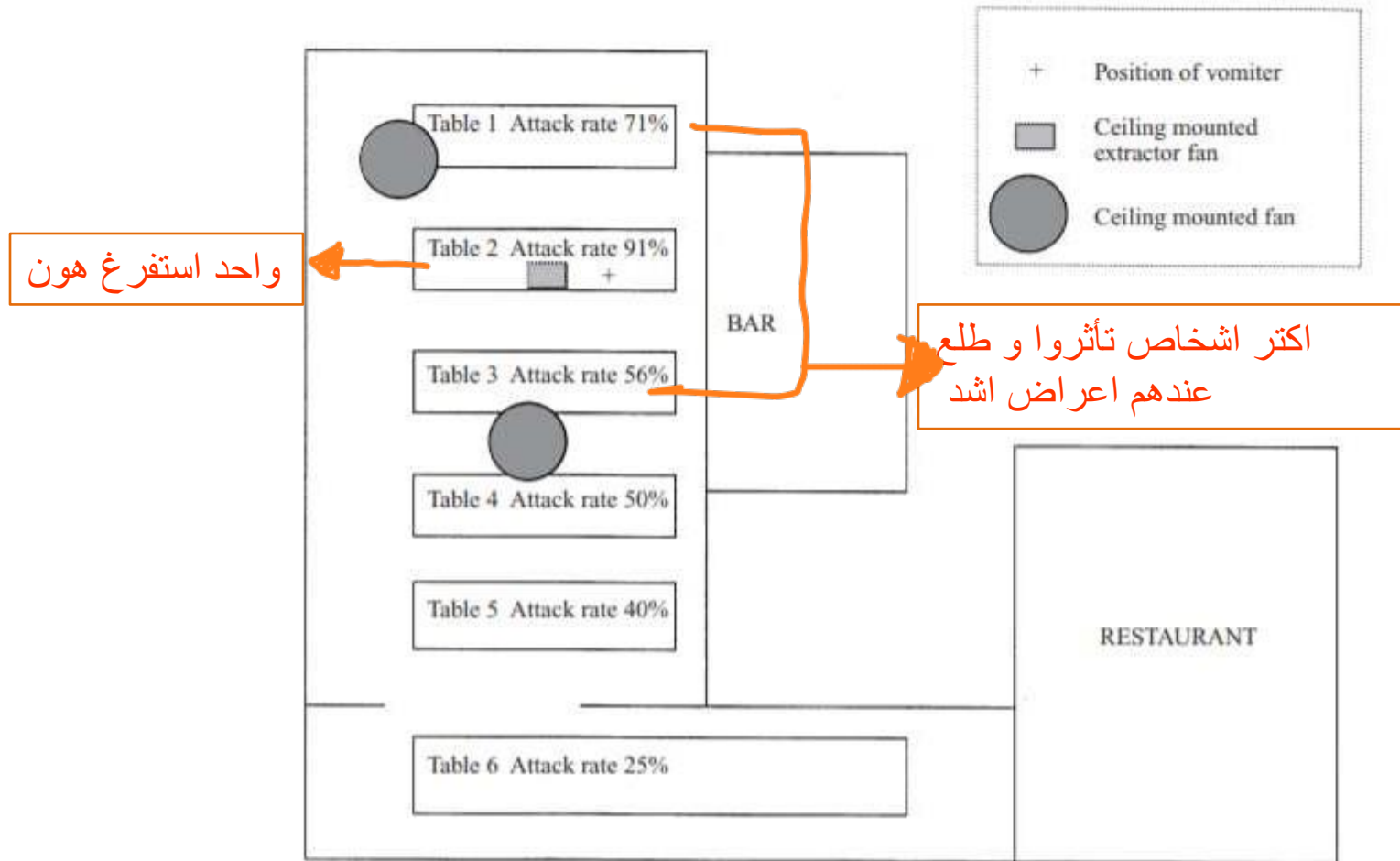


Fig. 3. Plan of the layout of tables in the restaurant. The locations of the index case and those who subsequently became ill are indicated.

- Worldwide, **nearly all children** are infected with rotavirus by 3–5 years of age.
- **Neonatal infections** are common but are often **asymptomatic** or mild, presumably because of protection by maternal antibody or breast milk
- First infections after 3 months of age are likely to be **symptomatic**, and the **incidence** of disease **peaks** among children **4–23 months** of age.
- Because of suboptimal access to hydration therapy, **rotavirus is a leading cause of diarrheal death among children in the developing world**

Viral gastroenteritis / epidemiology / Rotaviruses

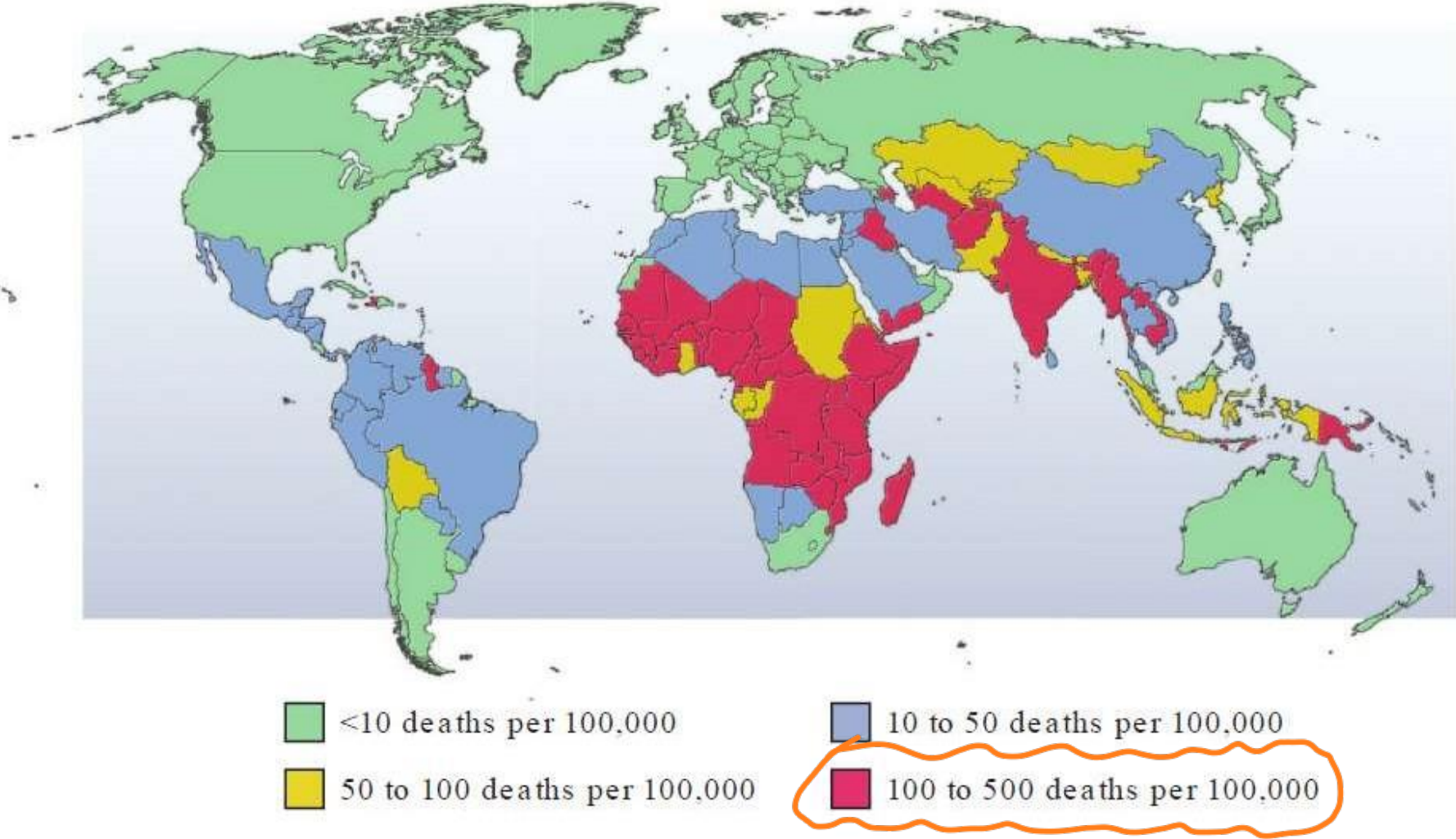
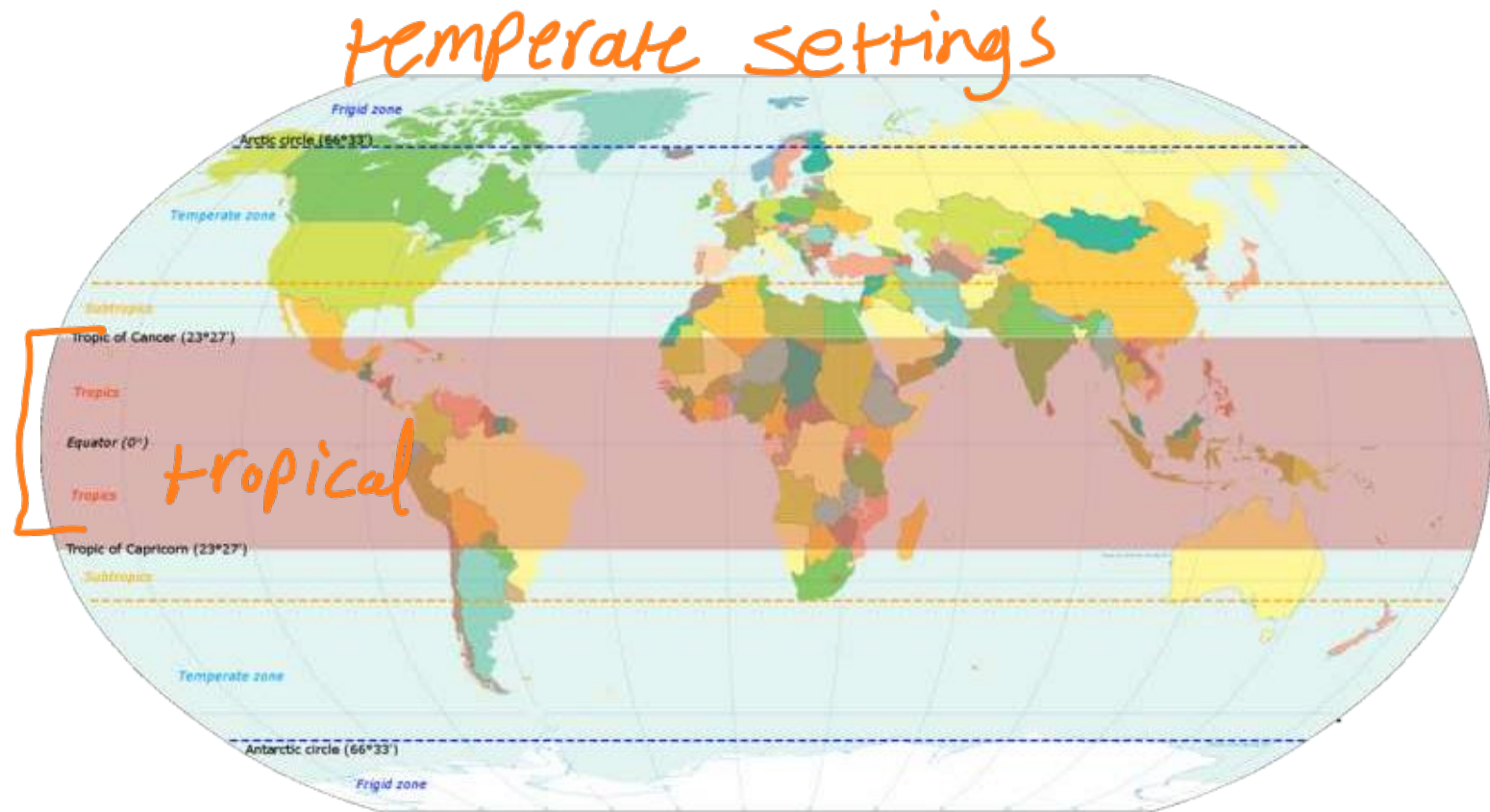
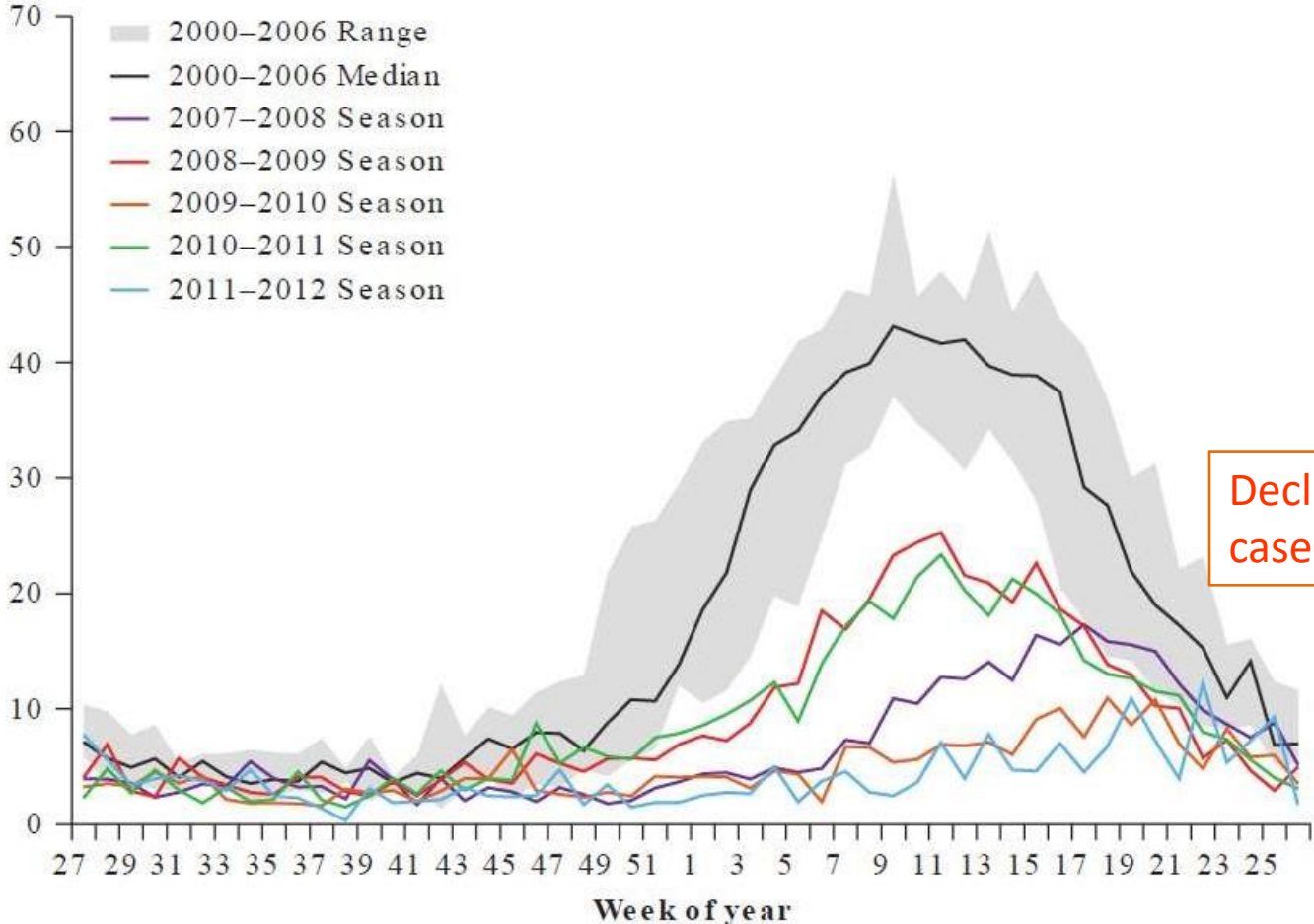


FIGURE 98-2
Rotavirus mortality rates by country, per 100,000 children <5 years of age. (Reproduced with permission from UD Parashar et al: J Infect Dis 200:S9, 2009.)

- In **tropical** settings, rotavirus disease occurs **year-round**, with less pronounced seasonal peaks than in **temperate** settings, where rotavirus disease occurs predominantly during the cooler and **winter months**.
- The implementation of **routine vaccination** of U.S. infants against rotavirus in 2006, was accompanied by substantial **declines in rotavirus detections** by a national network of sentinel laboratories.



Viral gastroenteritis / epidemiology / Rotaviruses



There used to be a differentiation along the year

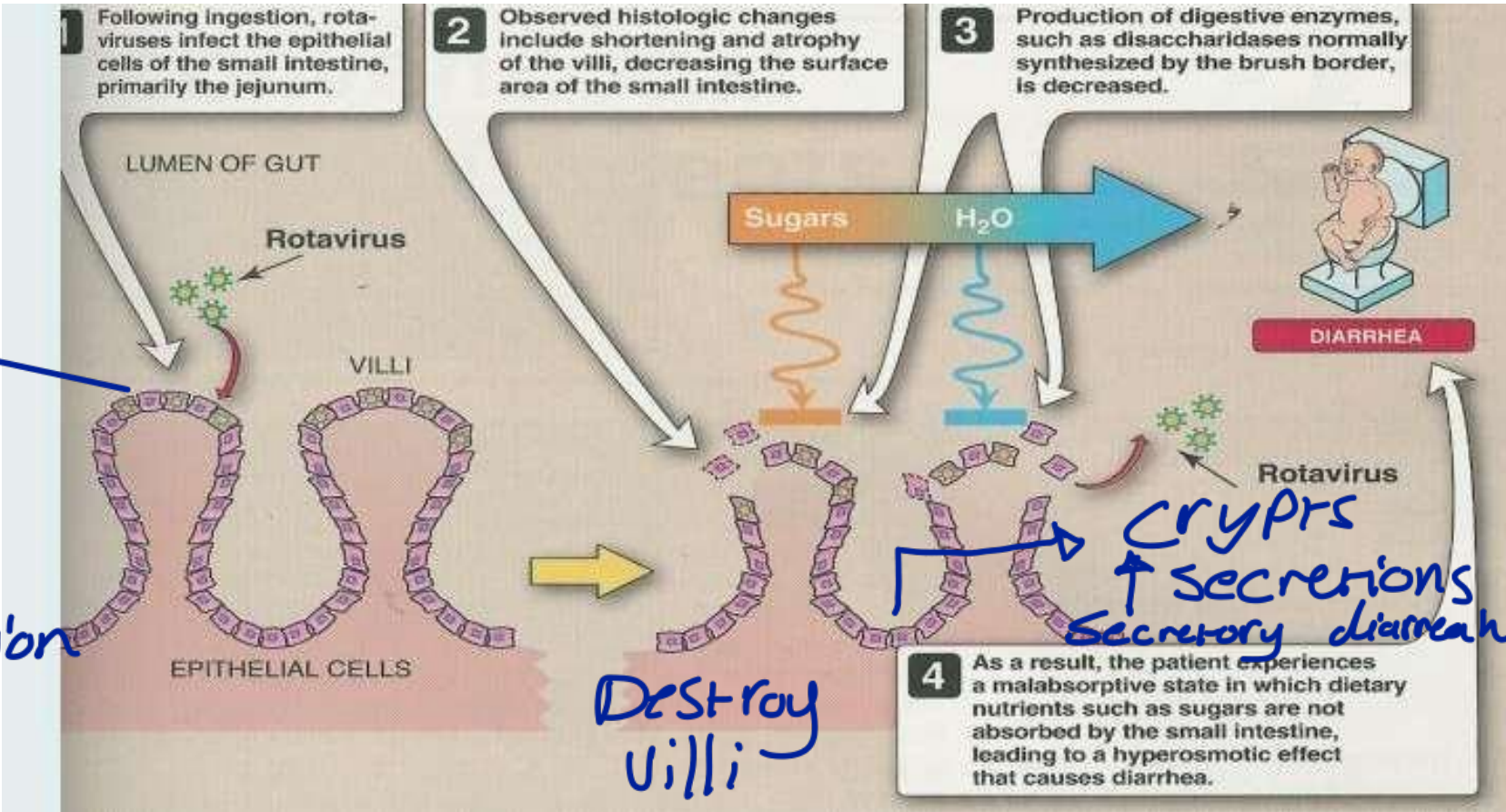
Decline in Rota Virus cases

FIGURE 98-3 Percentage of rotavirus tests with positive results, by week of year, July–June, 2000–2012. The maximal or minimal percentage of rotavirus-positive tests for 2000–2006 may have occurred

during any of the six baseline seasons. Data are from the National Respiratory and Enteric Virus Surveillance System. (Adapted from Centers for Disease Control and Prevention, 2012.)

Viral gastroenteritis / Pathogenesis / Rotaviruses

- Rotaviruses infect and ultimately destroy mature enterocytes in the villous epithelium of the proximal small intestine. The **loss of absorptive villous epithelium**, coupled with the **proliferation of secretory crypt cells**, results in **secretory diarrhea**.



* infect epithelium cells especially in jejunum

* Decrease absorption

Destroy villi

- The clinical spectrum of rotavirus infection ranges from subclinical infection to severe gastroenteritis leading to life-threatening dehydration.
- After an incubation period of 1–3 days, the illness has an abrupt onset, **with vomiting frequently preceding the onset of diarrhea.**
- The stools are characteristically **loose and watery** and only infrequently contain red or white cells. Gastrointestinal symptoms generally **resolve in 3–7 days.**

Incubation period longer

Symptoms longer
After 7 days baby
become dehydrated

Viral gastroenteritis / diagnosis / Rotaviruses

- Illness caused by rotavirus is difficult to distinguish clinically from that caused by other enteric viruses.
- Because large quantities of virus are shed in feces, the diagnosis can usually be confirmed by a wide variety of commercially available **EIAs** or by techniques for **detecting viral RNA**, like PCR or probe hybridization.



- Rotavirus gastroenteritis can lead to severe dehydration. Thus appropriate treatment should be instituted early.
- **Standard oral rehydration therapy** is successful for most children who can take fluids by mouth, but **IV fluid replacement** may be required for patients who are severely dehydrated or are unable to tolerate oral therapy because of frequent vomiting.
- Antibiotics and antimotility agents **should be avoided.**

DON'T GIVE IT !!!

~~Ø~~ Banned

- Efforts to develop rotavirus vaccines were pursued because it was apparent—**given the similar rates in less developed and industrialized nations**—that improvements in hygiene and sanitation were unlikely to reduce disease incidence.

Vaccine:

- In 2006, **promising safety and efficacy** results or **two new rotavirus vaccines** were reported. Both vaccines are now **recommended for routine immunization**, and their use has rapidly led to a >70–80% decline in rotavirus hospitalizations and emergency department visits at hospitals



THE JORDAN TIMES WEATHER, 

[Home](#) [Local](#) [Region](#) [World](#) [Business](#) [Sports](#) [Features](#) [Opinion](#) [Letters](#) [Biz Club](#)

[Home](#) » [Local](#) » Rotavirus vaccination drive begins next Sunday

Rotavirus vaccination drive begins next Sunday

By JT - Feb 25,2015 - Last updated at Feb 25,2015

AMMAN — The Health Ministry on Wednesday said it will begin immunising children against the rotavirus on Sunday after its inclusion in the national vaccination programme.

TABLE 98-2

CHARACTERISTICS OF GASTROENTERITIS CAUSED BY VIRAL AND BACTERIAL AGENTS

FEATURE	VIRAL GASTROENTERITIS	BACTERIAL GASTROENTERITIS
Setting	Incidence similar in developing and developed countries	More common in settings with poor hygiene and sanitation
Infectious dose <i>inoculum</i>	Low (10–100 viral particles) for most agents	High (>10 ⁵ bacteria) for Escherichia coli, Salmonella, Vibrio; medium (10 ² –10 ⁵ bacteria) for Campylobacter jejuni; low (10–100 bacteria) for Shigella
Seasonality	In temperate climates, winter seasonality for most agents; year-round occurrence in tropical areas	More common in summer or rainy months, particularly in developing countries with a high disease burden
Incubation period	1–3 days for most agents; can be shorter for norovirus	1–7 days for common agents (e.g., Campylobacter, E. coli, Shigella, Salmonella); a few hours for bacteria producing preformed toxins (e.g., Staphylococcus aureus, Bacillus cereus)
Reservoir	Primarily humans <i>primarily humans</i>	Depending on species, human (e.g., Shigella, Salmonella), animal (e.g., Campylobacter, Salmonella, E. coli), and water (e.g., Vibrio) reservoirs exist

Viral vs bacterial gastroenteritis

TABLE 98-2

CHARACTERISTICS OF GASTROENTERITIS CAUSED BY VIRAL AND BACTERIAL AGENTS		
FEATURE	VIRAL GASTROENTERITIS	BACTERIAL GASTROENTERITIS
Fever	Common with rotavirus and norovirus; uncommon with other agents	Common with agents causing inflammatory diarrhea (e.g., Salmonella, Shigella)
Vomiting	Prominent and can be the only presenting feature, especially in children	Common with bacteria producing preformed toxins; less prominent in diarrhea due to other agents
Diarrhea	Common; nonbloody in almost all cases	Prominent and occasionally bloody with agents causing inflammatory diarrhea
Duration	1–3 days for norovirus and sapovirus; 2–8 days for other viruses	1–2 days for bacteria producing preformed toxins; 2–8 days for most other bacteria
Diagnosis	This is often a diagnosis of exclusion in clinical practice. Commercial enzyme immunoassays are available for detection of rotavirus and adenovirus, but identification of other agents is limited to research and public health laboratories.	Fecal examination for leukocytes and blood is helpful in differential diagnosis. Culture of stool specimens, sometimes on special media, can identify several pathogens. Molecular techniques are useful epidemiologic tools but are not routinely used in most laboratories.
Treatment	Supportive therapy to maintain adequate hydration and nutrition should be given. Antibiotics and antimotility agents are contraindicated.	Supportive hydration therapy is adequate for most patients. Antibiotics are recommended for patients with dysentery caused by Shigella or diarrhea caused by Vibrio cholerae and for some patients with Clostridium difficile colitis.

Further reading:

- Harrison's Infectious Diseases 3rd Edition
SECTION 5: Viral Infections, Chapter 98