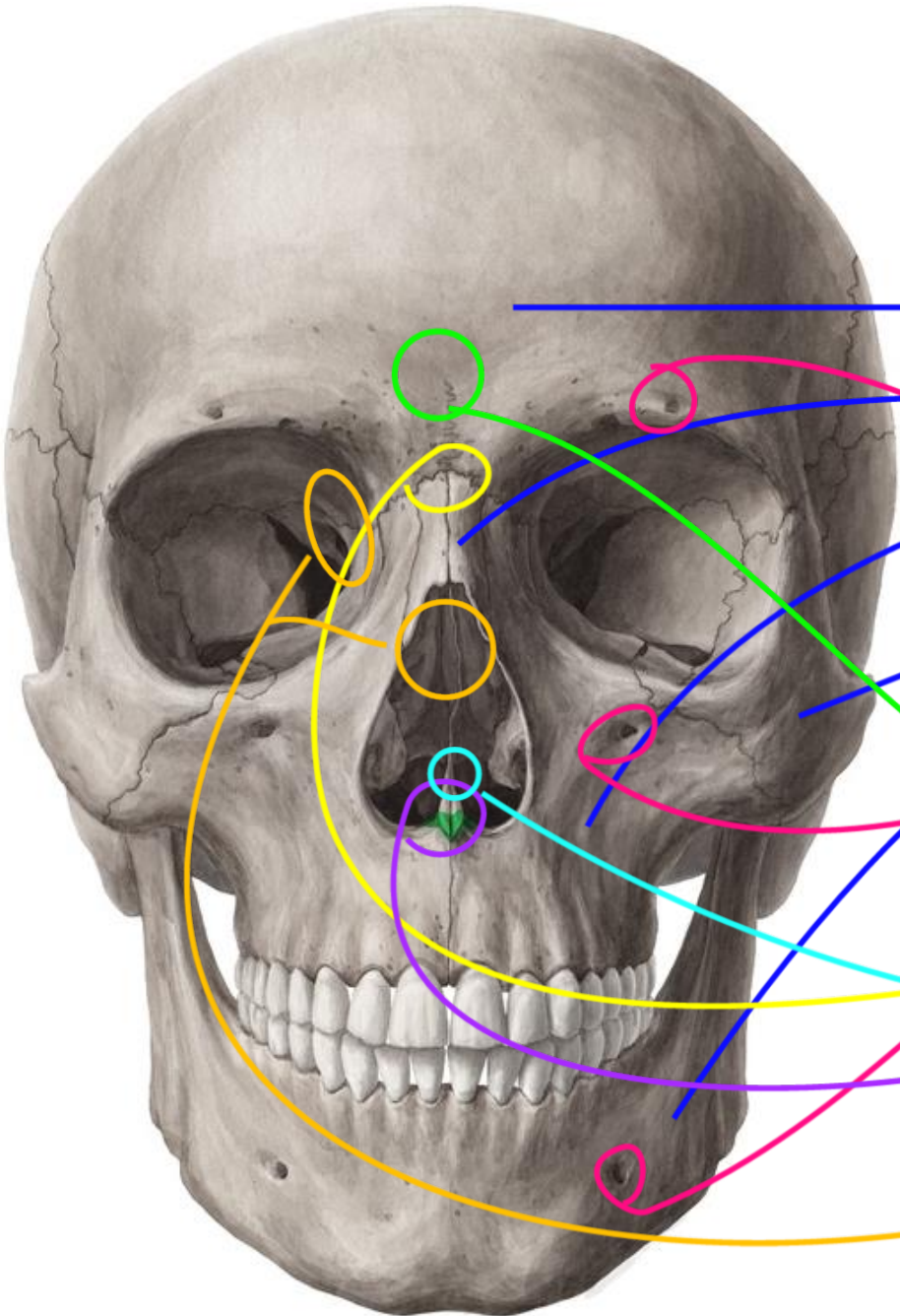


Anatomy images for MSS
practical exam- 2022

Identify the followings:



Frontal bone

Nasal bone

Maxilla

Zygomatic bone

Mandible

Supraorbital foramen

Infraorbital foramen

Mental foramen

Superciliary arches

Glabella

Nasion

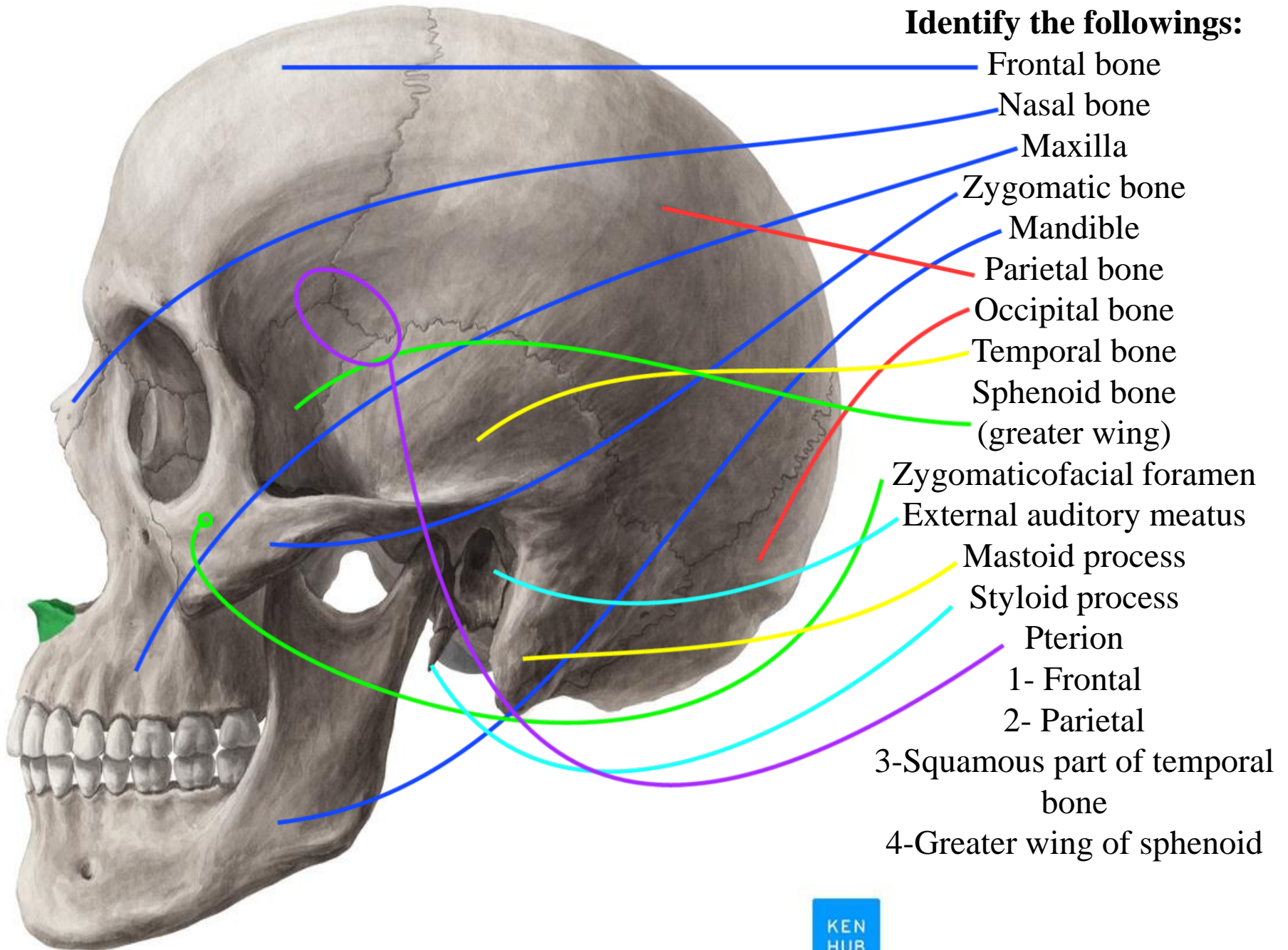
Anterior nasal spine

Vomer

Ethmoid



Identify the followings:



Frontal bone

Nasal bone

Maxilla

Zygomatic bone

Mandible

Parietal bone

Occipital bone

Temporal bone

Sphenoid bone

(greater wing)

Zygomaticofacial foramen

External auditory meatus

Mastoid process

Styloid process

Pterion

1- Frontal

2- Parietal

3-Squamous part of temporal bone

4-Greater wing of sphenoid



Identify the followings:

Cribriform plate of the ethmoid

Frontal crest

Crista galli

Lesser wing of sphenoid

Anterior clinoid process

Body of sphenoid

Foramen magnum

Greater wing of the sphenoid

Petrous part of the temporal bone

Posterior clinoid process

Optic canal ✗

Foramen rotundum

Foramen ovale

Foramen spinosum

Foramen lacerum

Carotid canal

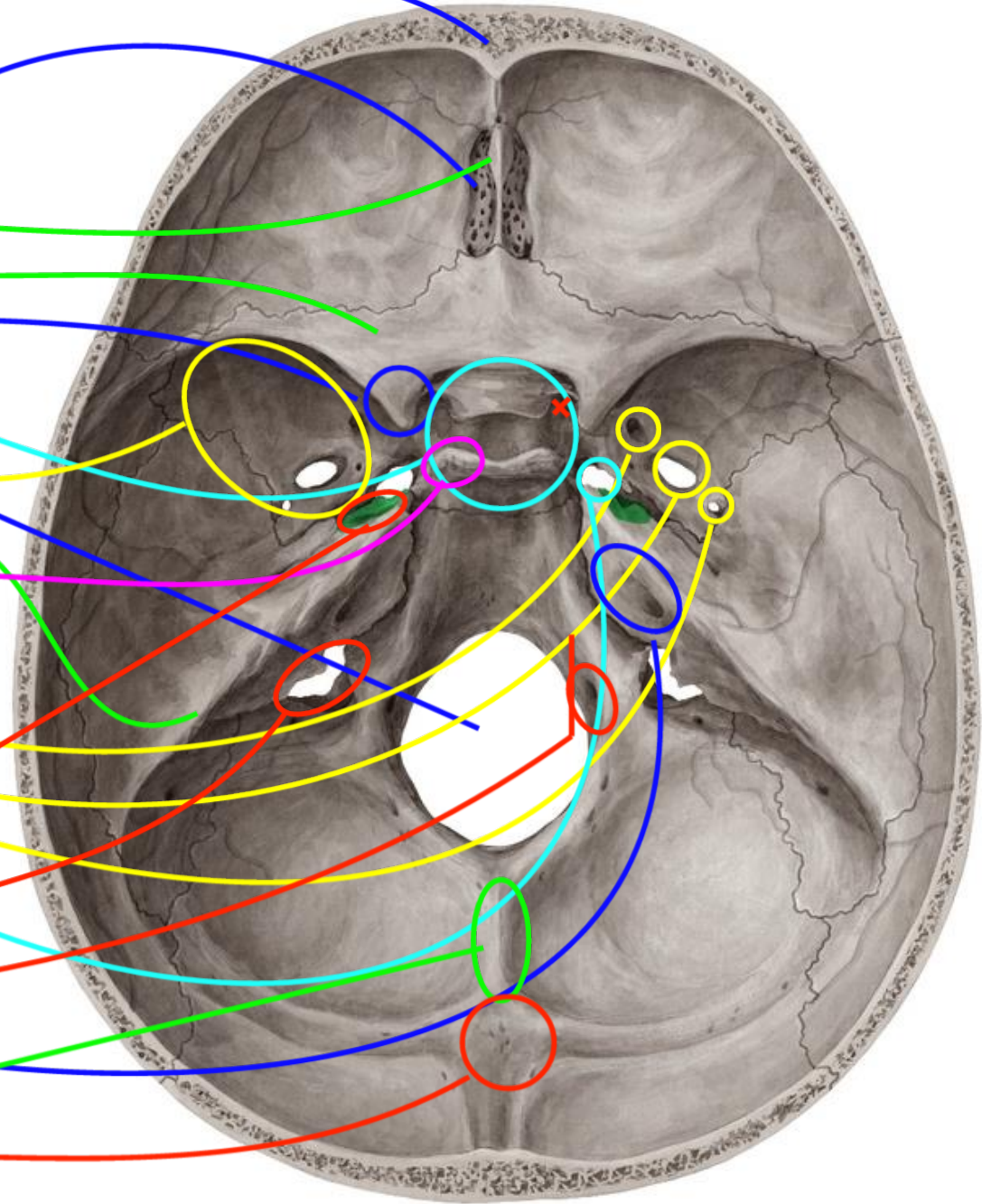
Jugular foramen

Hypoglossal canal

Internal acoustic meatus

Internal occipital crest

Internal occipital protuberance



Foramina for cranial nerves

Olfactory nerves: Cribriform plate of the ethmoid

Optic nerve: Optic canal

Oculomotor nerve

Trochlear nerve

Abducent nerve

} Superior orbital fissure

Trigeminal nerve

Ophthalmic nerve (branches): Superior orbital fissure

Maxillary nerve: Foramen rotundum

Mandibular nerve: Foramen ovale

Facial nerve: Internal acoustic meatus, stylomastoid foramen

Vestibulocochlear nerve: Internal acoustic meatus

Glossopharyngeal nerve

Vagus nerve

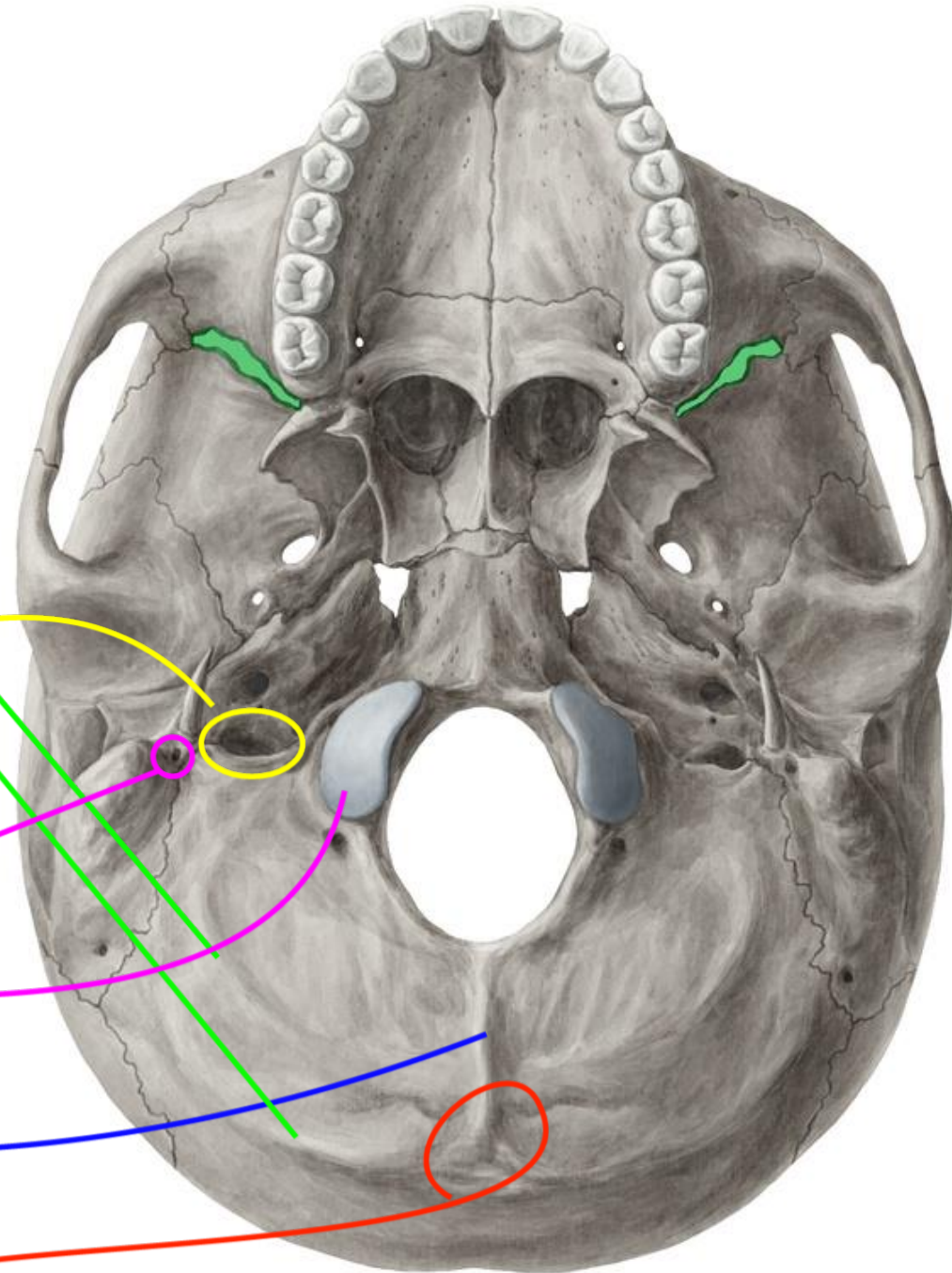
Accessory nerve

} Jugular foramen

Hypoglossal canal: Hypoglossal nerve

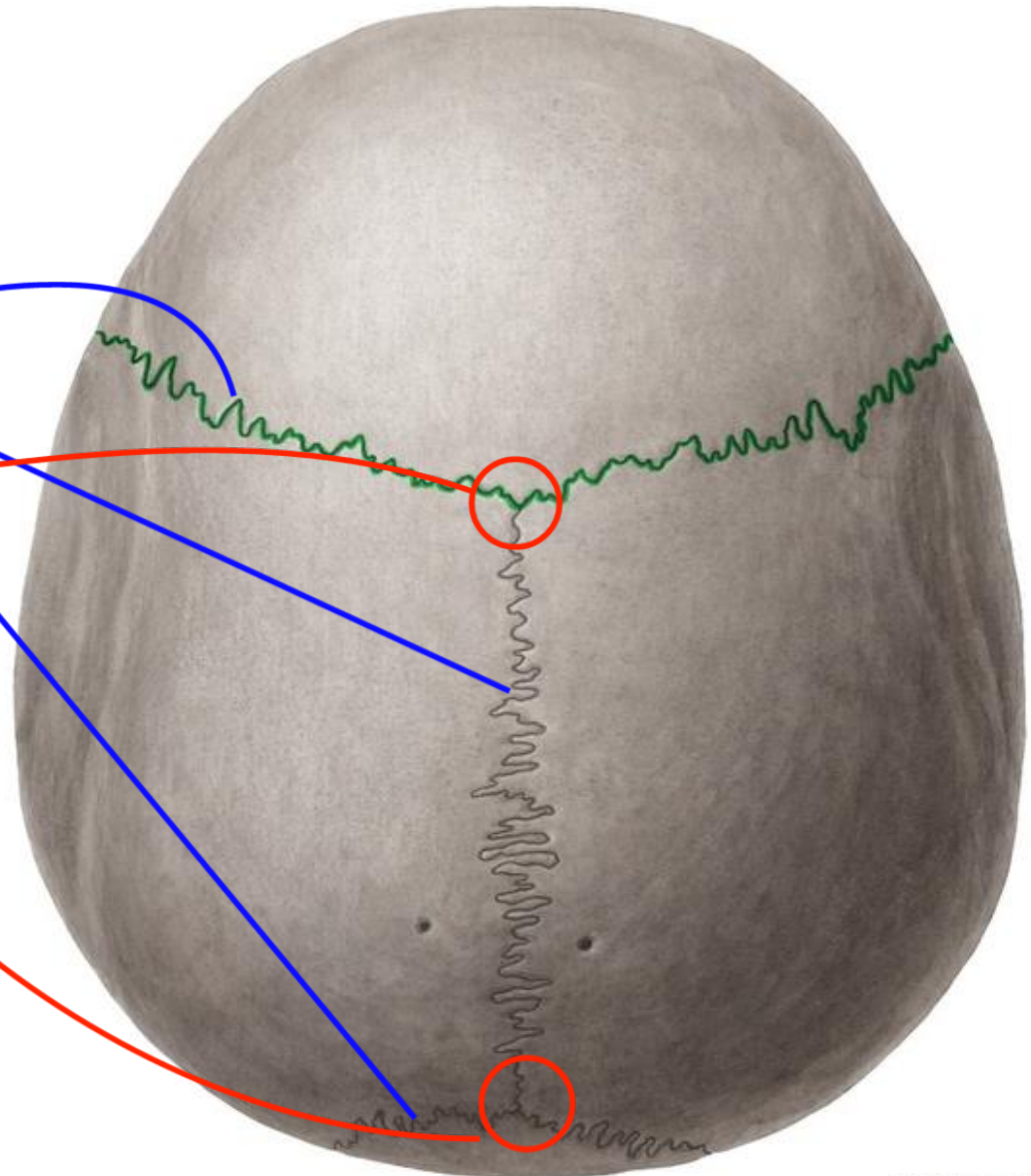
Identify the followings:

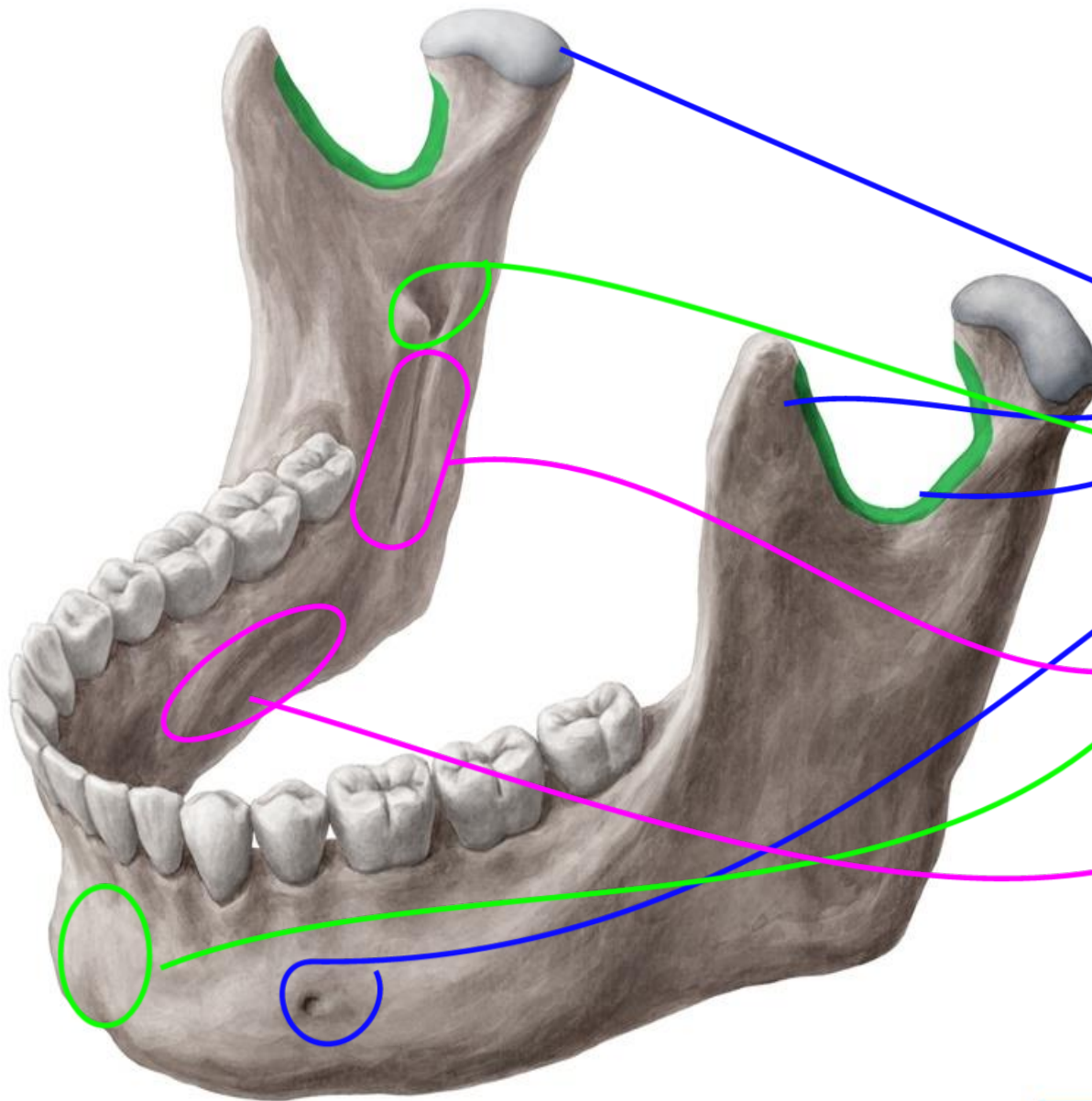
- Foramen magnum
- External occipital crest
- External occipital protuberance
- Inferior nuchal line
- Superior nuchal line
- Foramen ovale
- Foramen spinosum
- Foramen lacerum
- Opening for carotid canal
- Jugular foramen
- Hypoglossal canal
- Mastoid process
- Styloid process
- Stylomastoid foramen
- Occipital condyles



Identify the followings:

- Coronal suture
- Sagittal suture
- Lambdoid suture
- Bregma
- Lambda





Identify the followings:

- Body
- Ramus
- Angle

Condylar process (head and neck)

Coronoid process

Mandibular notch

Mandibular foramen

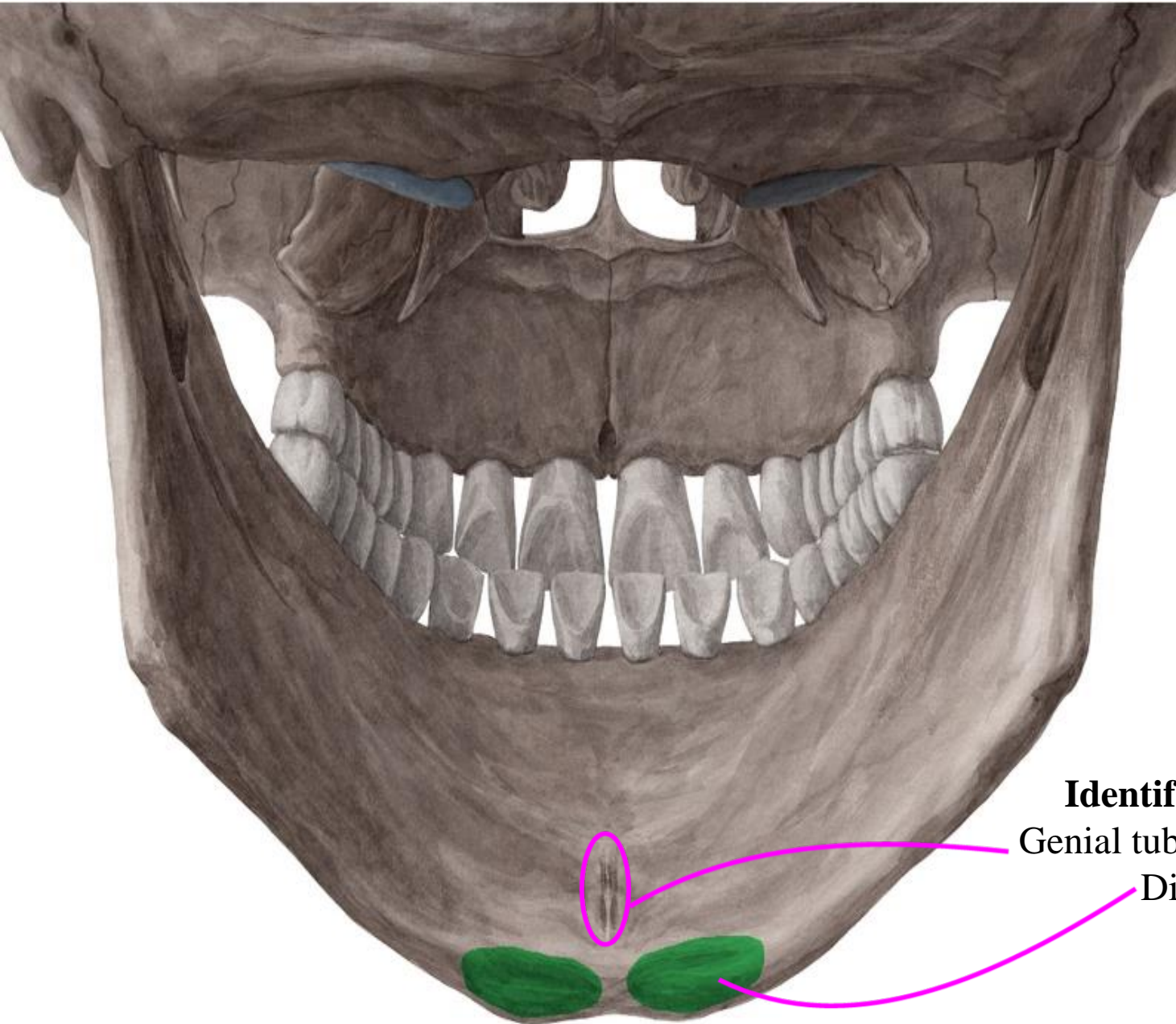
Mental foramen

Mental protuberance

Mylohyoid groove

Mylohyoid line

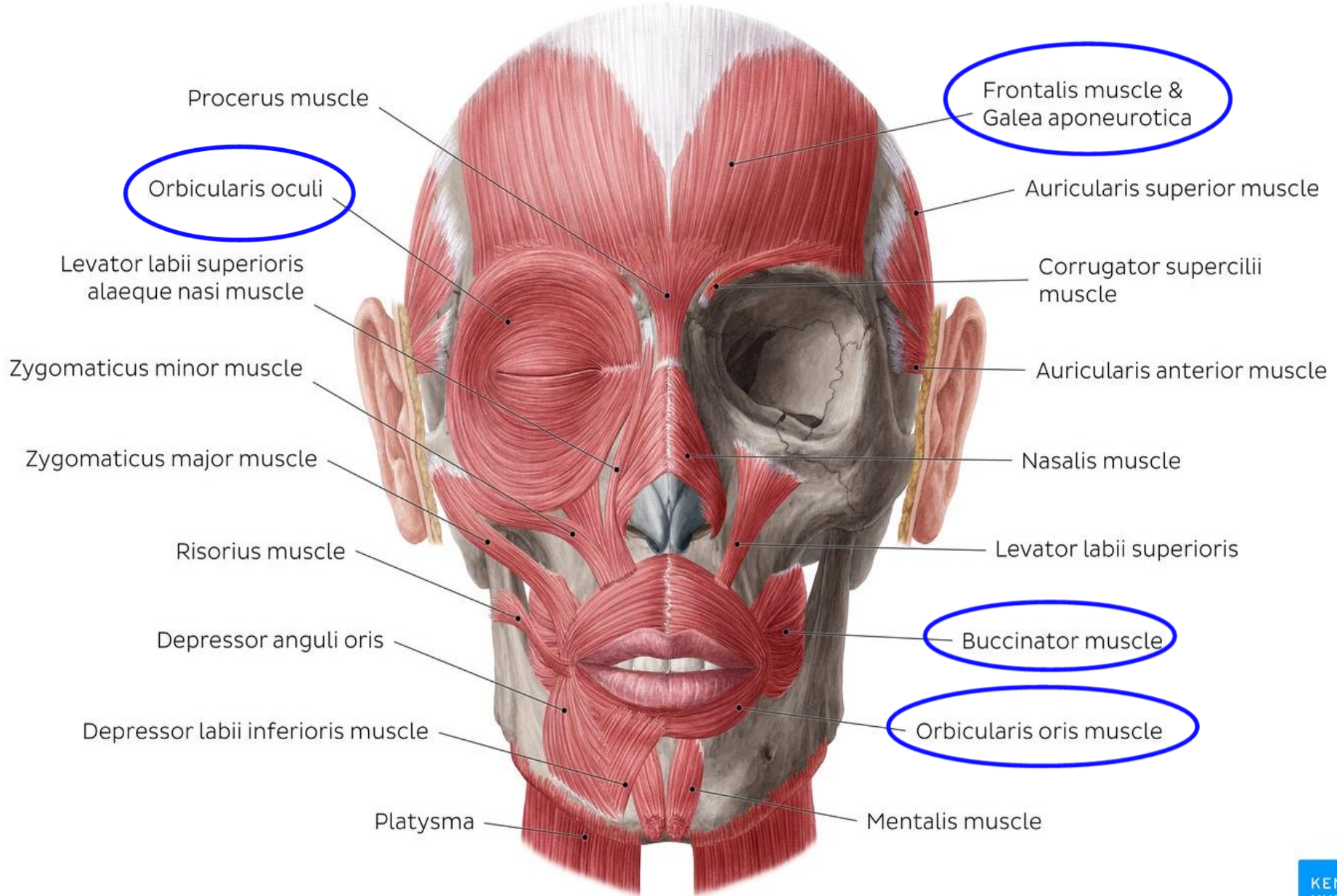




Identify the followings:

Genial tubercle (Mental spine)

Digastric fossa



Identify the following muscles (action and nerve supply):
Orbicularis oculi, orbicularis oris, buccinator, and frontalis

Identify the followings:

Parotid gland

Parotid duct

Buccinator

Submandibular gland

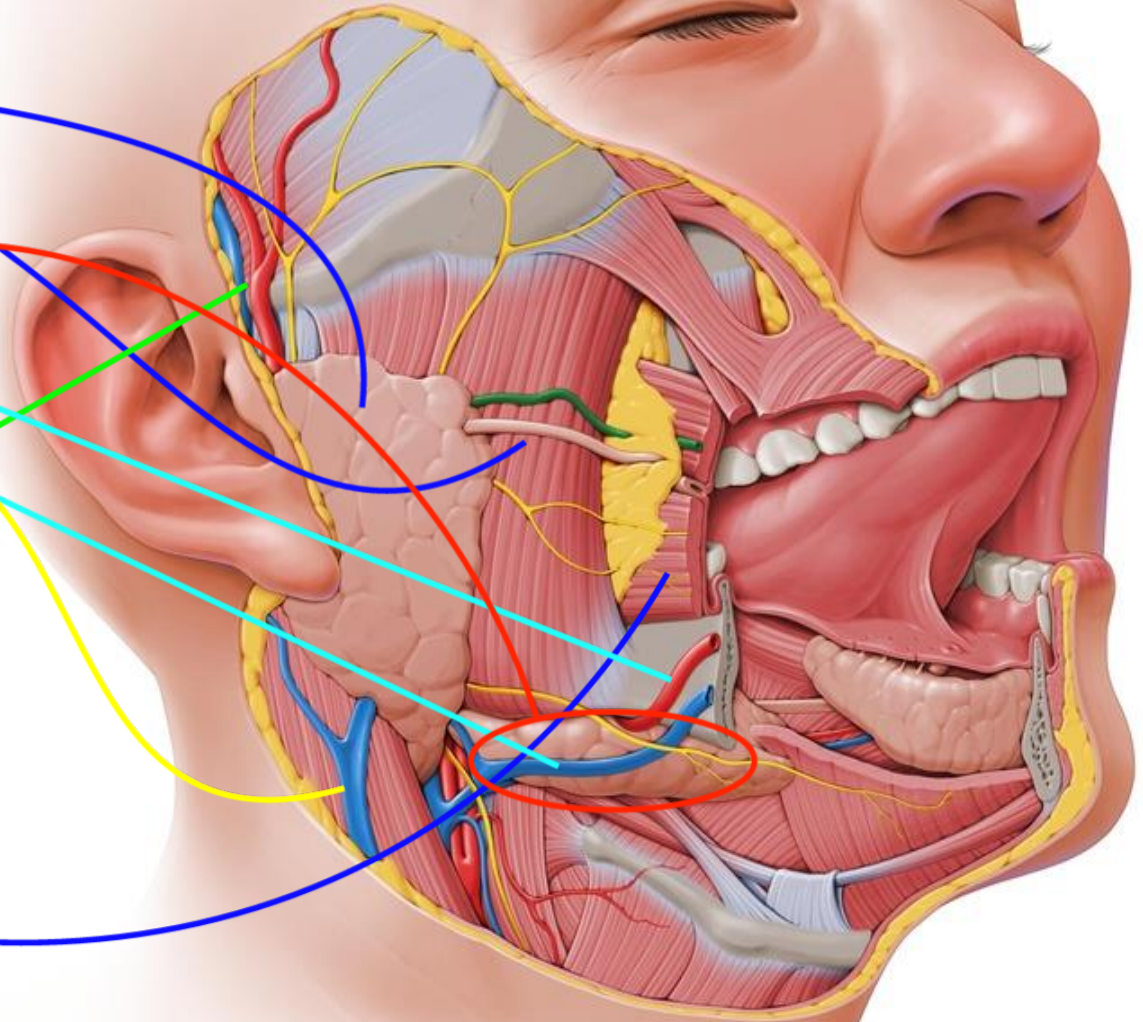
Facial artery

Facial vein

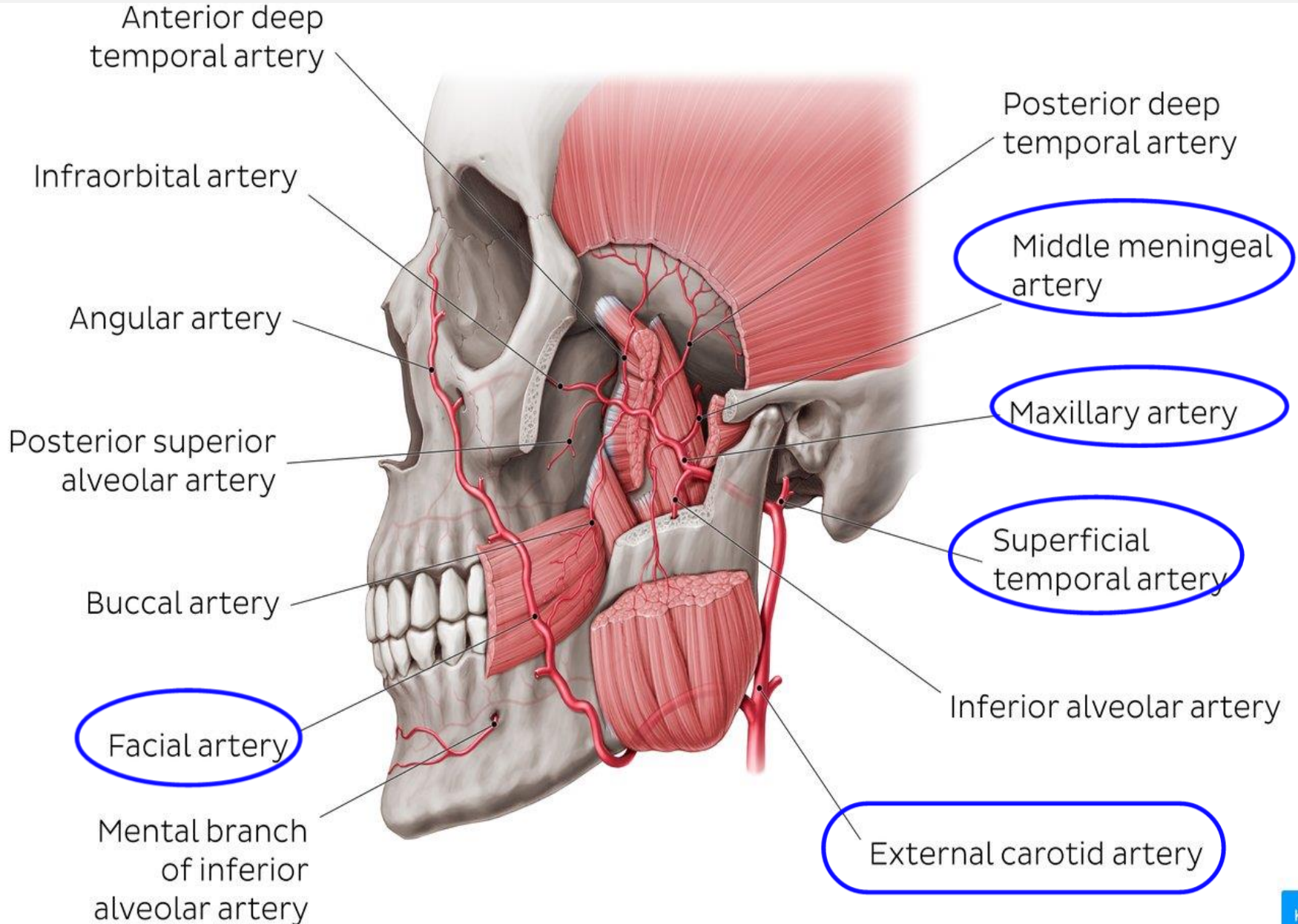
External jugular vein

Superficial temporal artery

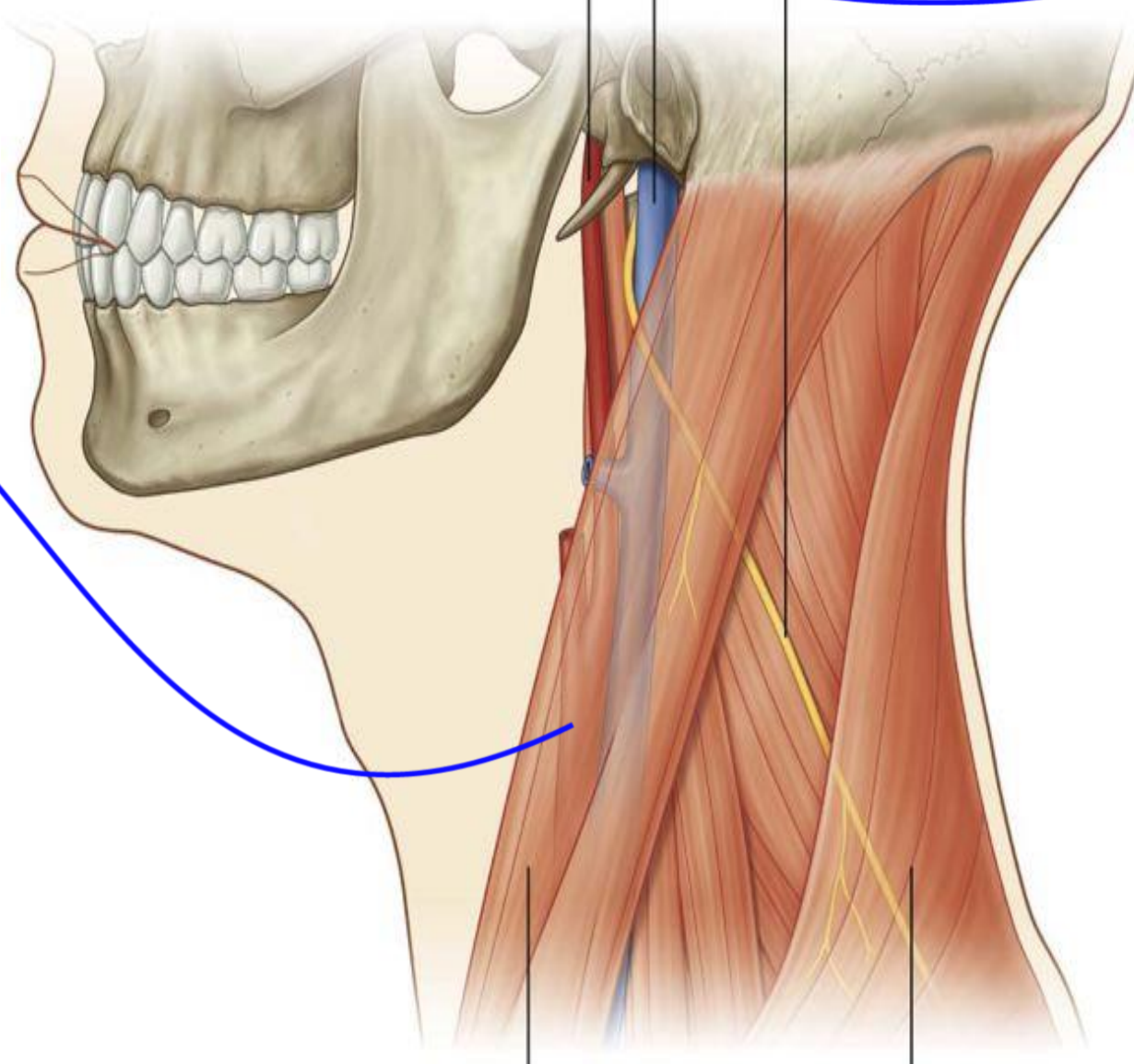
Branches of facial nerve



Identify the followings: External carotid artery, Facial artery, Maxillary artery, Middle meningeal artery, Superficial temporal artery



Internal carotid artery
Internal jugular vein
Accessory nerve [XI]



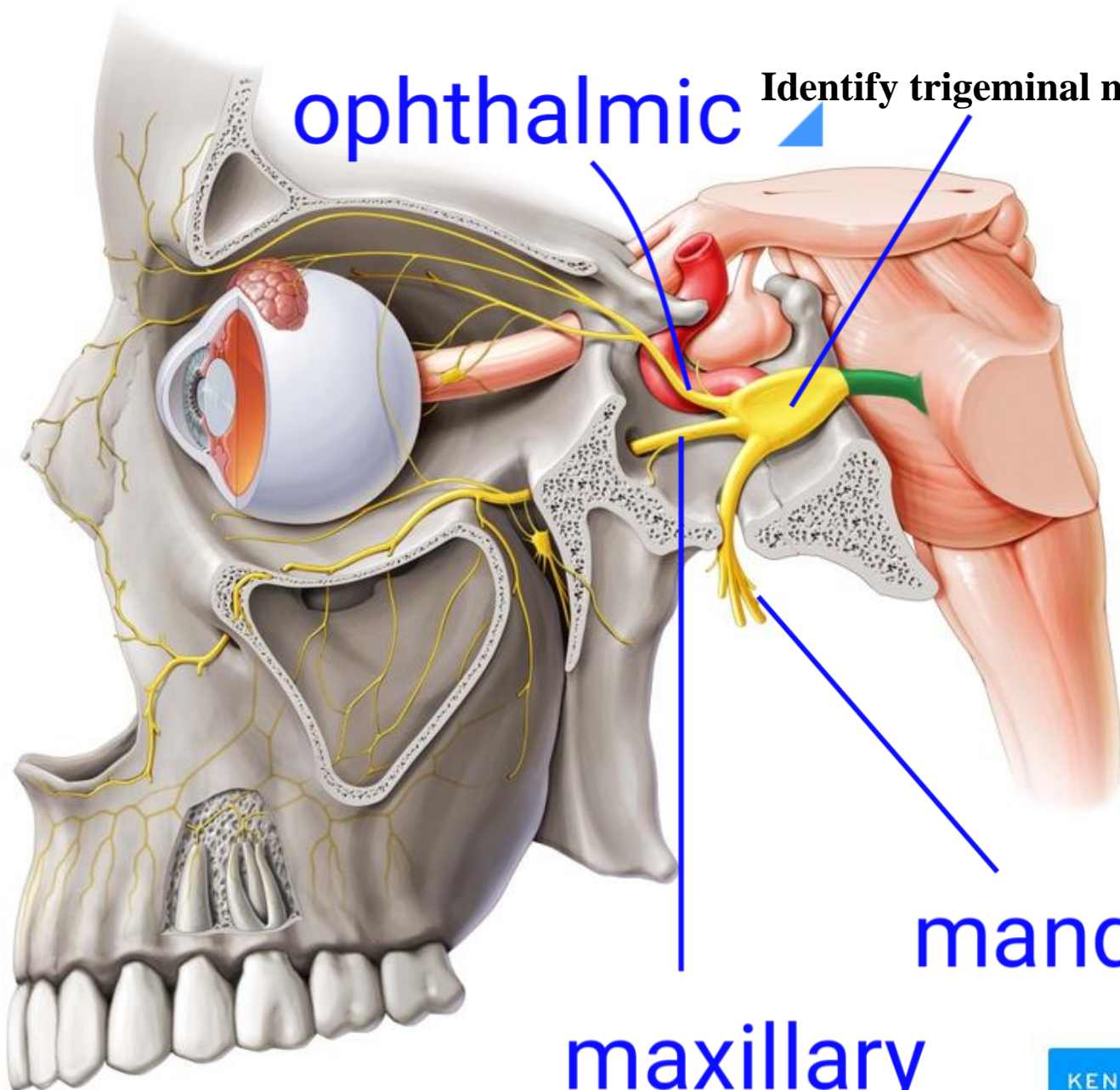
Identify the followings:
Common carotid artery
External carotid artery
Internal carotid artery
Internal jugular vein
Accessory nerve (spinal)

Sternocleidomastoid muscle

Trapezius muscle

ophthalmic

Identify trigeminal nerve and its branches



mandibul

maxillary



Orbital walls

Orbital walls

Roof:

Orbital plate of frontal bone (1)

Lesser wing of sphenoid (2)

Floor:

Orbital plate of maxilla (3)

Lateral wall:

Orbital plate of zygomatic bone (4)

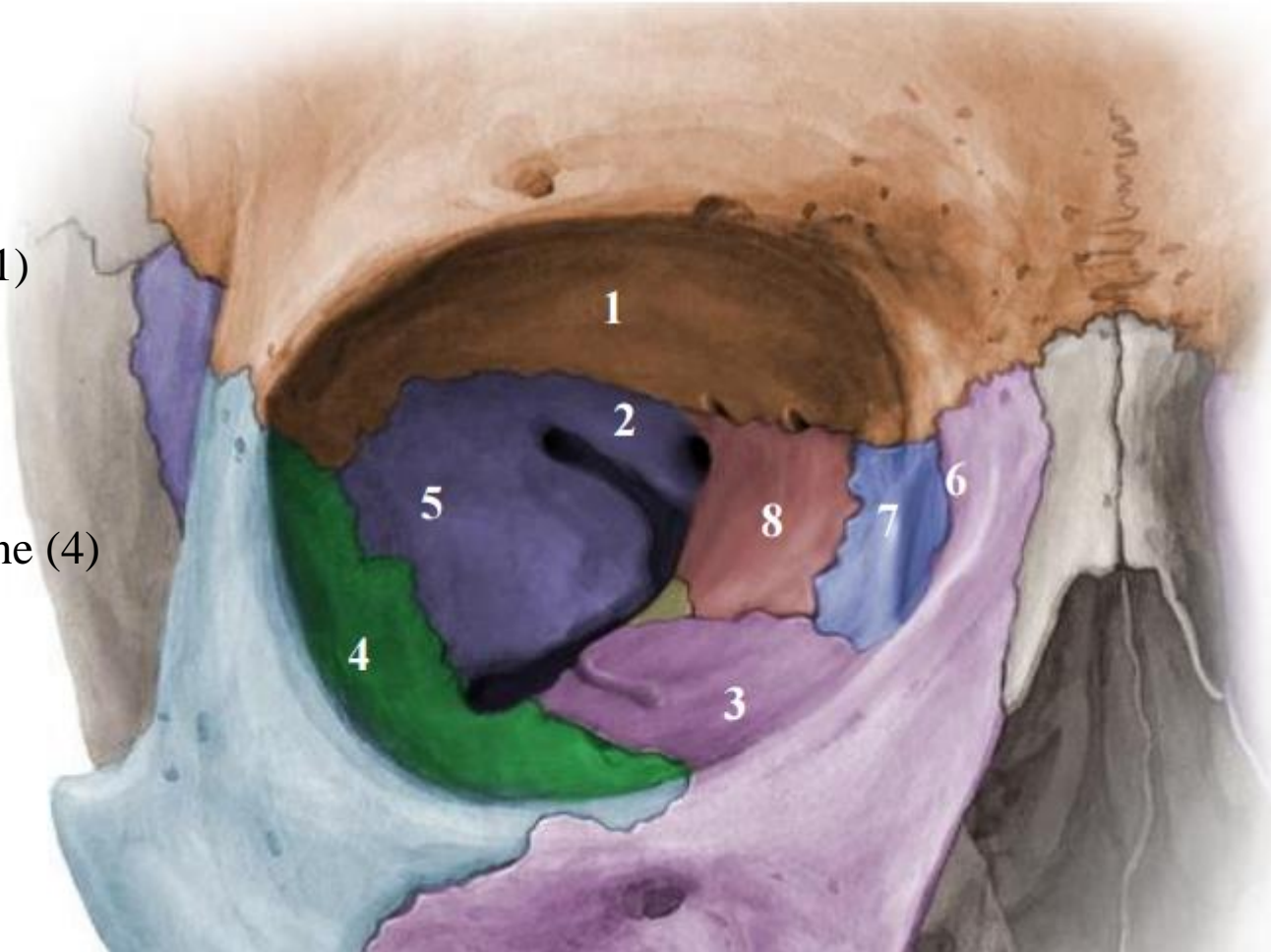
Greater wing of sphenoid (5)

Medial wall:

Frontal process of maxilla (6)

Lacrimal bone (7)

Orbital plate of ethmoid (8)



Foramina and fissures of the orbit

Foramina and fissures of the orbit (and structures passing through)

Superior orbital fissure
(9)

Inferior orbital fissure
(10)

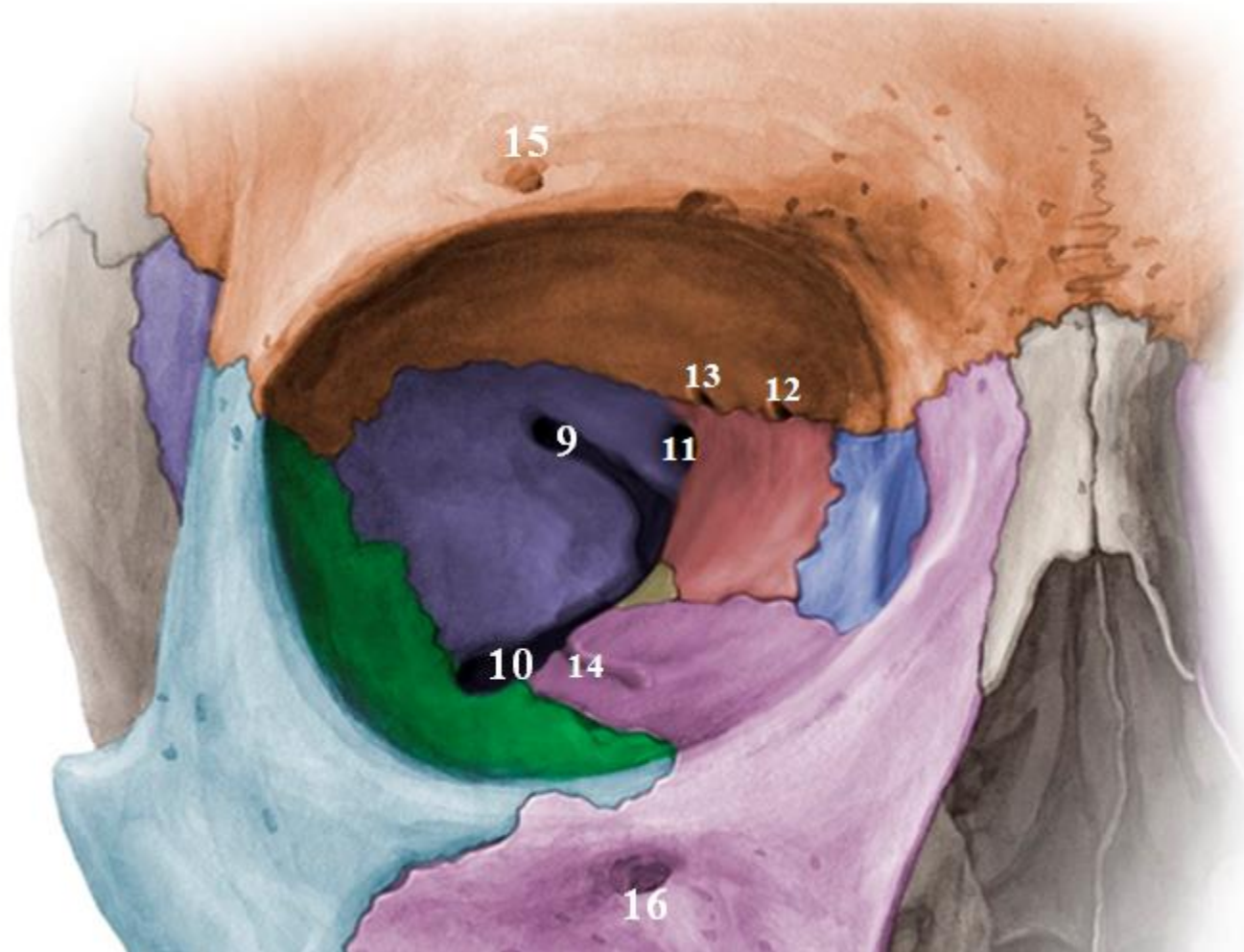
Optic canal (11)

Anterior and posterior
ethmoidal
foramina (12, 13)

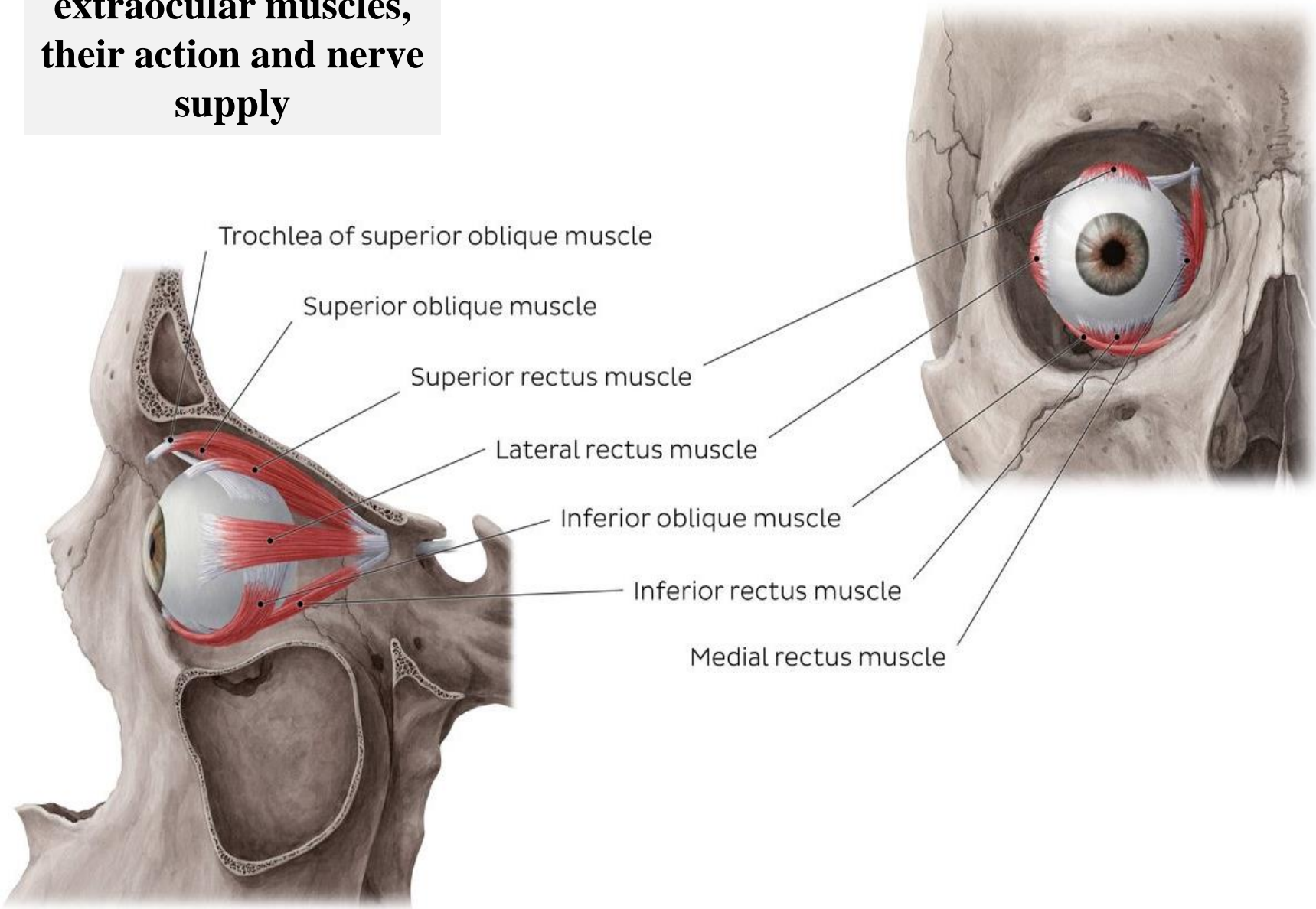
Infraorbital groove and
canal (14)

Supraorbital foramen (15)

Infraorbital foramen (16)

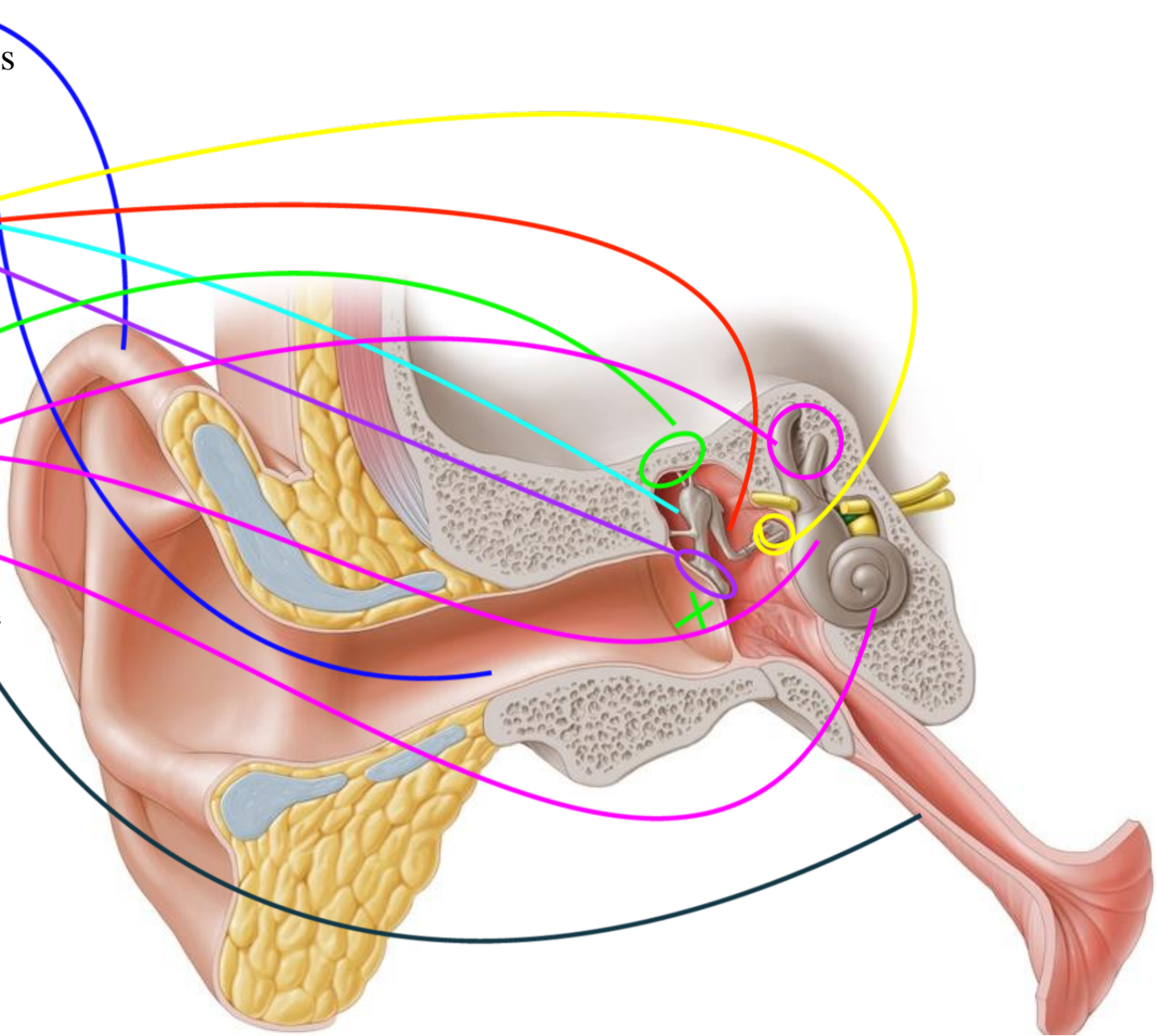


**Identify the
extraocular muscles,
their action and nerve
supply**



Identify the followings:

- Inner, middle and inner ear
- Pinna (auricle)
- External acoustic meatus
- Tympanic membrane
- Umbo
- Malleus
- Incus
- Stapes
- Eustachian tube
- Tegmen tympani
- Semicircular canals
- Vestibule
- Cochlea
- Facial nerve
- Vestibulocochlear nerve

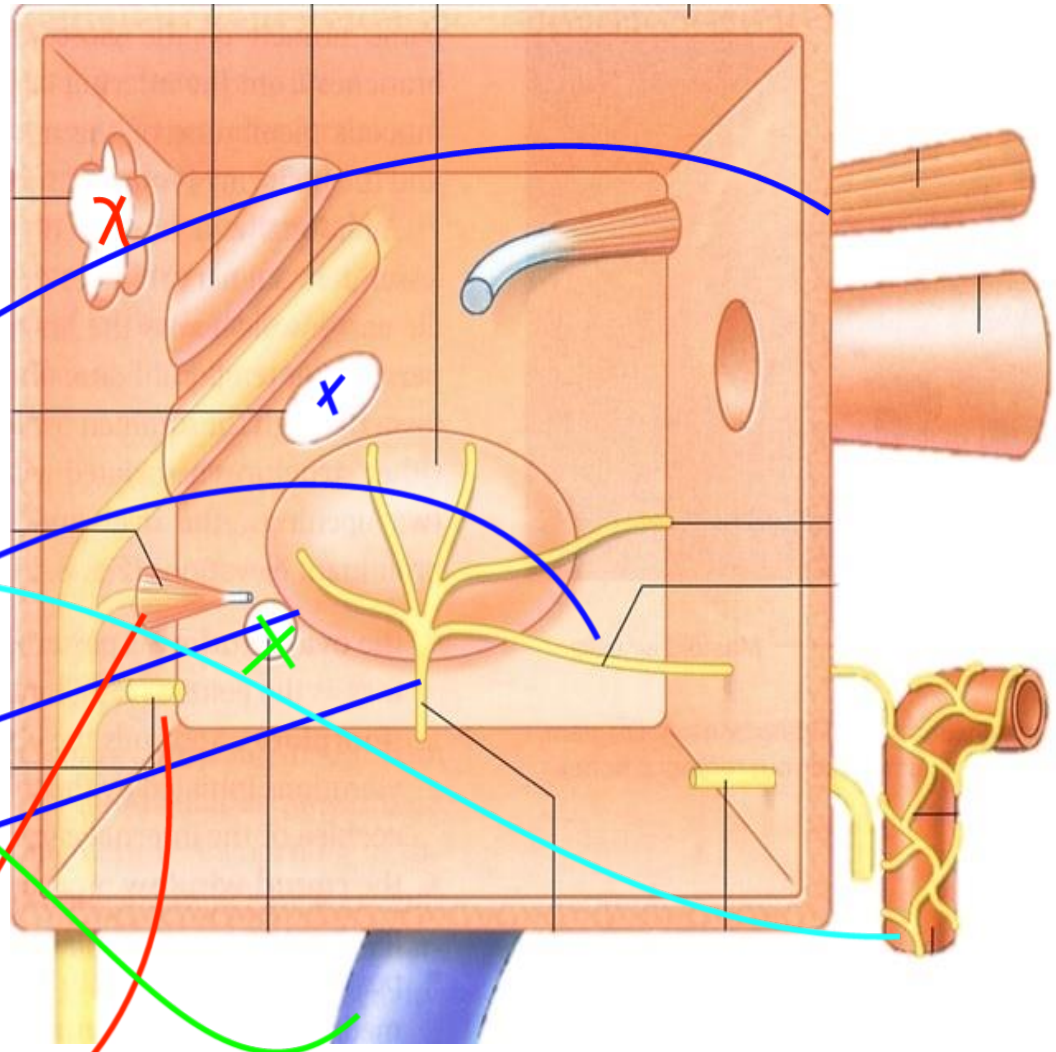


Middle ear

Identify the followings :

- Anterior wall
- Medial wall
- Posterior wall
- Roof
- Floor

- Canal for tensor tympani
- Eustachian tube
- Internal carotid artery
- Sympathetic carotid plexus
- Internal jugular vein
- Oval window **X**
- Round window **X**
- Promontory
- Tympanic plexus
- Facial canal
- Aditus to mastoid **X**
- Pyramid and stapedius muscle
- Chorda tympani



Identify the followings:

Outer fibrous coat

Cornea

Sclera

Middle vascular coat

Choroid

Ciliary body

Iris

Inner nervous coat

Retina

Corneoscleral junction (limbus)

Pupil

Lens

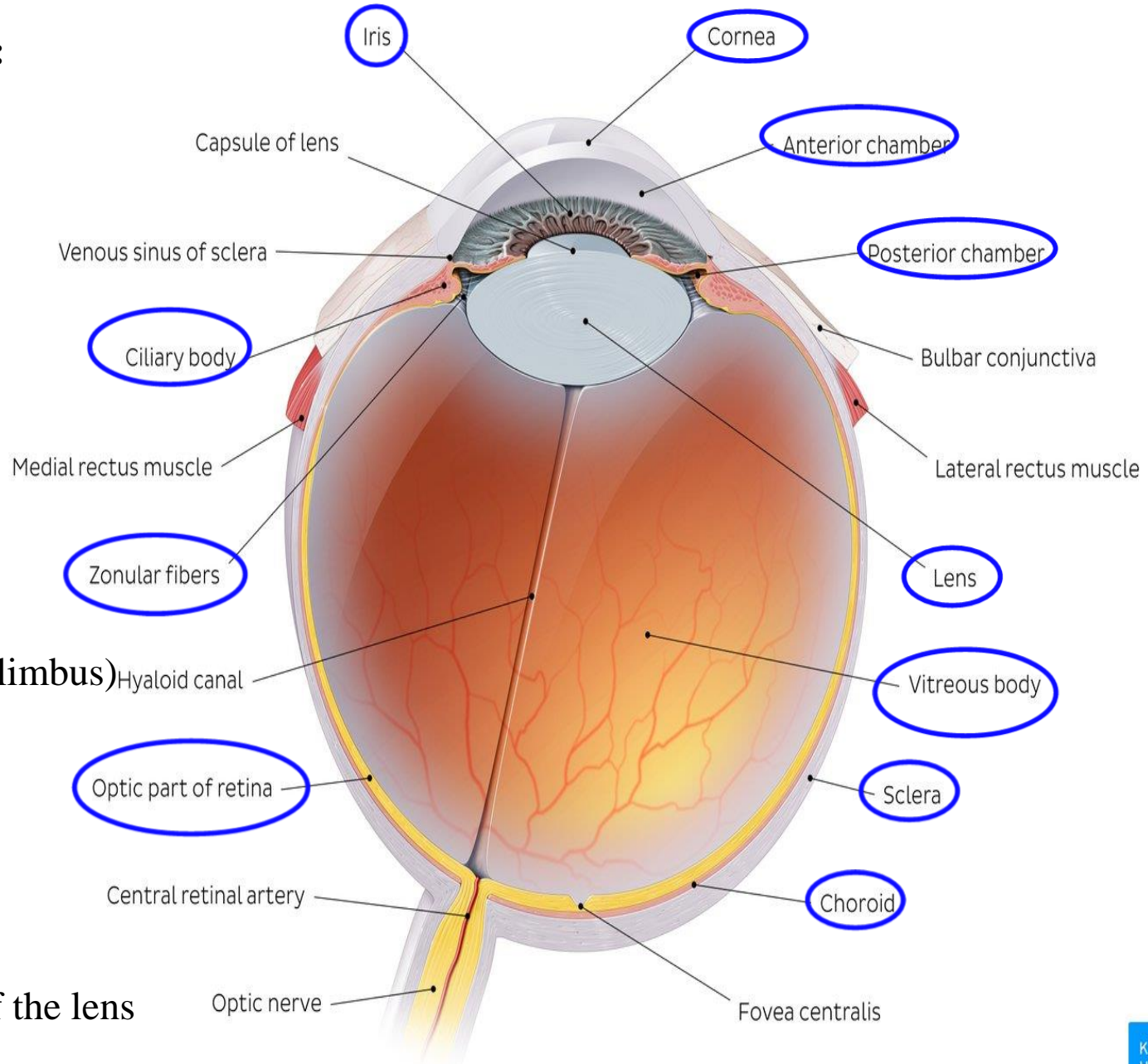
Anterior chamber

Posterior chamber

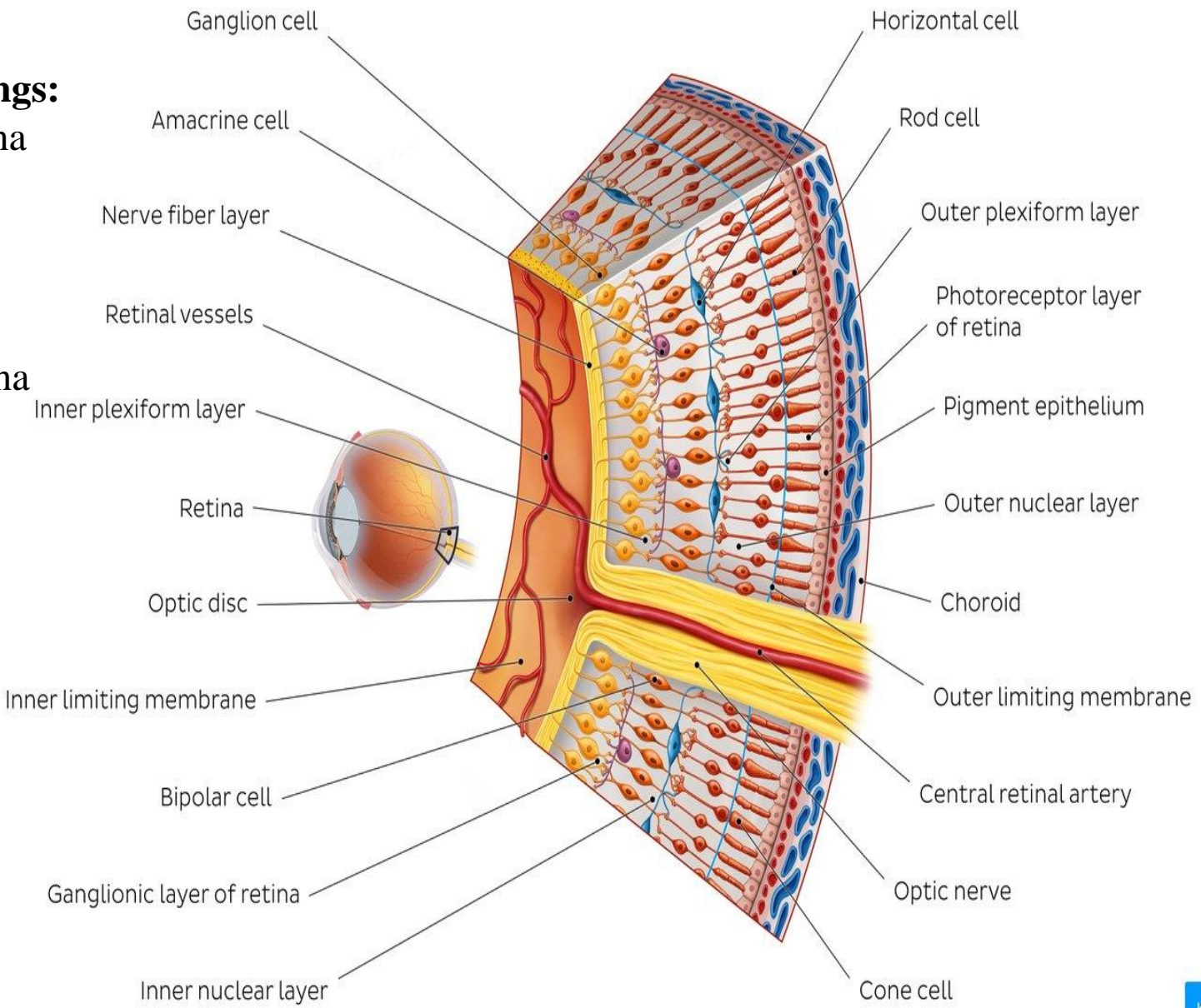
Aqueous humor

Vitreous body

Suspensory ligaments of the lens



Identify the followings:
 The 10 layers of retina
 The cells of retina
 Choroid
 Optic disc
 Optic nerve
 Central artery of retina



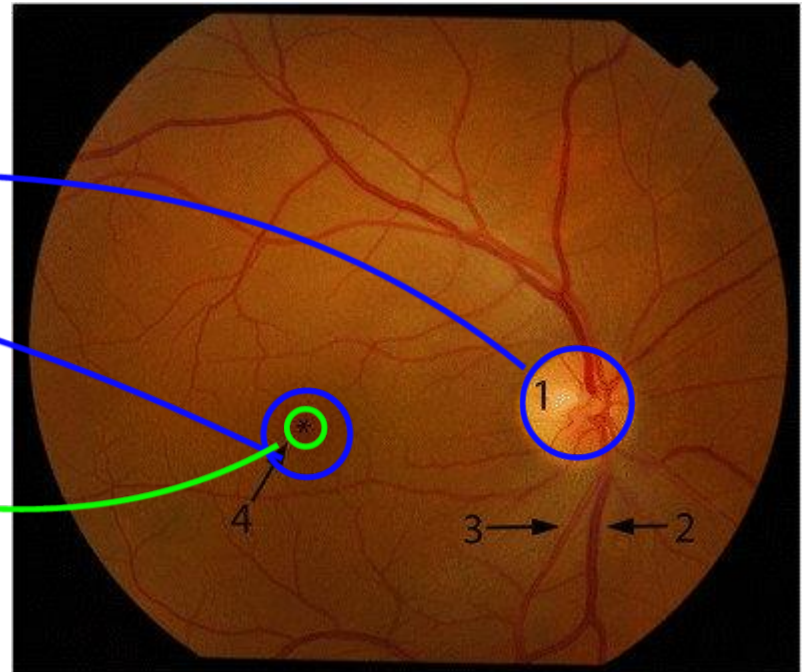
Identify the followings:

Optic disc

Macula lutea

Fovea centralis

Retinal vessels



Identify the sternocleidomastoid, suprahyoid and infrahyoid muscles, their action and nerve supply

