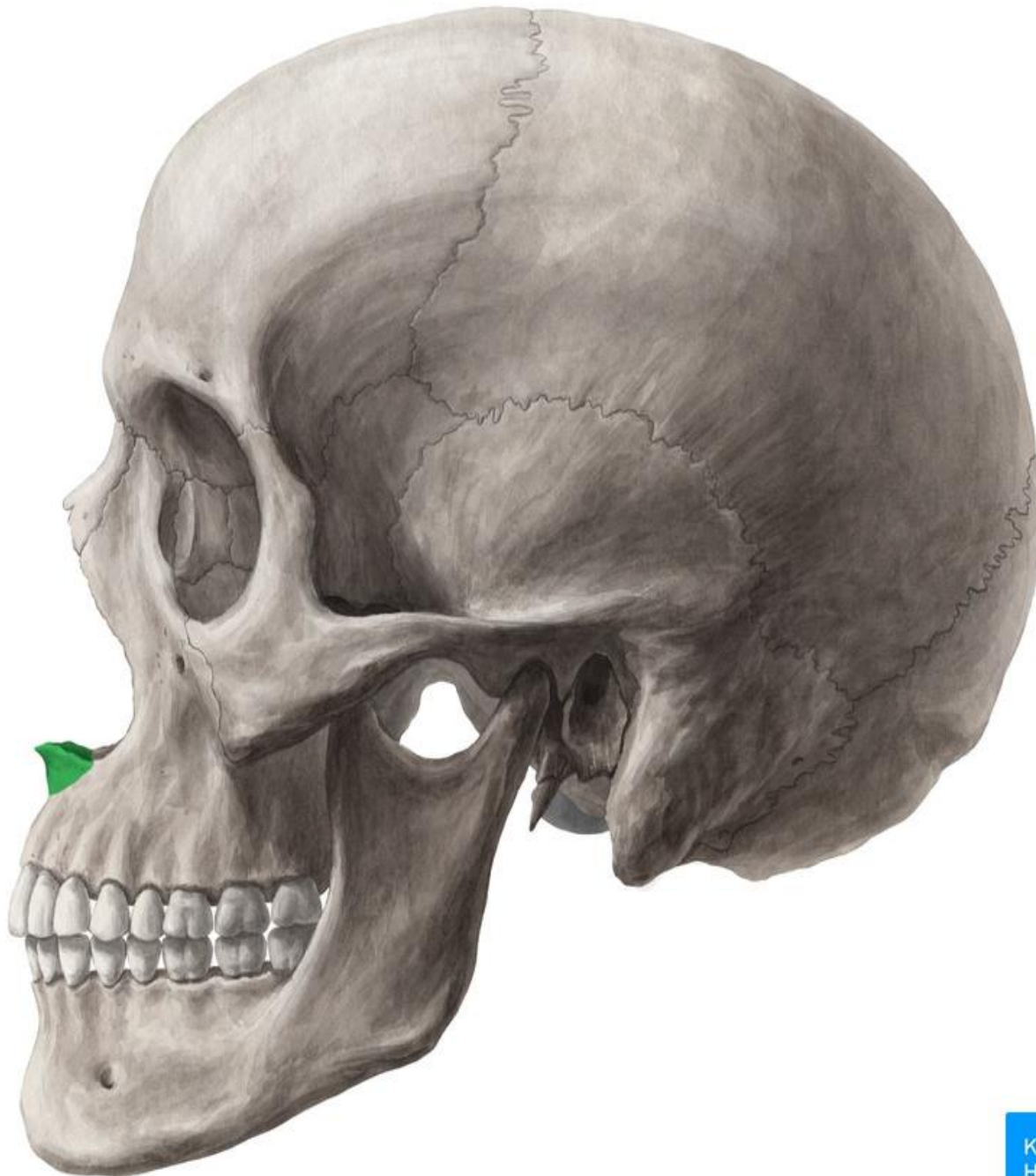


Anatomy images for MSS
practical exam- 2022



Identify the followings:

- Frontal bone
- Nasal bone
- Maxilla
- Zygomatic bone
- Mandible
- Supraorbital foramen
- Infraorbital foramen
- Mental foramen
- Superciliary arches
- Glabella
- Nasion
- Anterior nasal spine
- Vomer
- Ethmoid



Identify the followings:

Frontal bone

Nasal bone

Maxilla

Zygomatic bone

Mandible

Parietal bone

Occipital bone

Temporal bone

Sphenoid bone

(greater wing)

Zygomatofacial foramen

External auditory meatus

Mastoid process

Styloid process

Pterion

1- Frontal

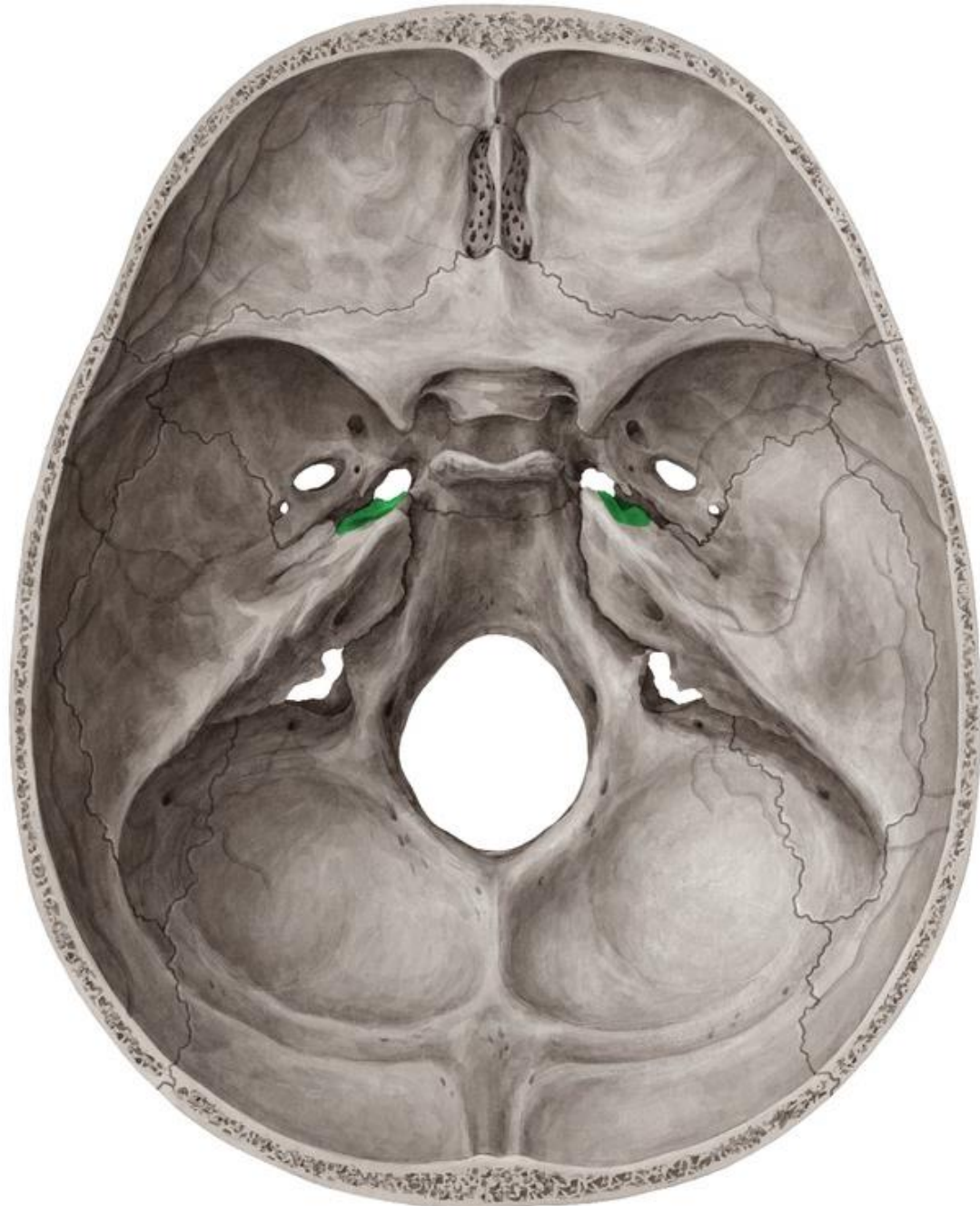
2- Parietal

3-Squamous part of temporal
bone

4-Greater wing of sphenoid

Identify the followings:

- Cribriform plate of the ethmoid
- Frontal crest
- Crista galli
- Lesser wing of sphenoid
- Anterior clinoid process
- Body of sphenoid
- Foramen magnum
- Greater wing of the sphenoid
- Petrous part of the temporal bone
- Posterior clinoid process
- Optic canal
- Foramen rotundum
- Foramen ovale
- Foramen spinosum
- Foramen lacerum
- Carotid canal
- Jugular foramen
- Hypoglossal canal
- Internal acoustic meatus
- Internal occipital crest
- Internal occipital protuberance



Foramina for cranial nerves

Olfactory nerves: Cribriform plate of the ethmoid

Optic nerve: Optic canal

Oculomotor nerve

Trochlear nerve

Abducent nerve

} Superior orbital fissure

Trigeminal nerve

Ophthalmic nerve (branches): Superior orbital fissure

Maxillary nerve: Foramen rotundum

Mandibular nerve: Foramen ovale

Facial nerve: Internal acoustic meatus, stylomastoid foramen

Vestibulocochlear nerve: Internal acoustic meatus

Glossopharyngeal nerve

Vagus nerve

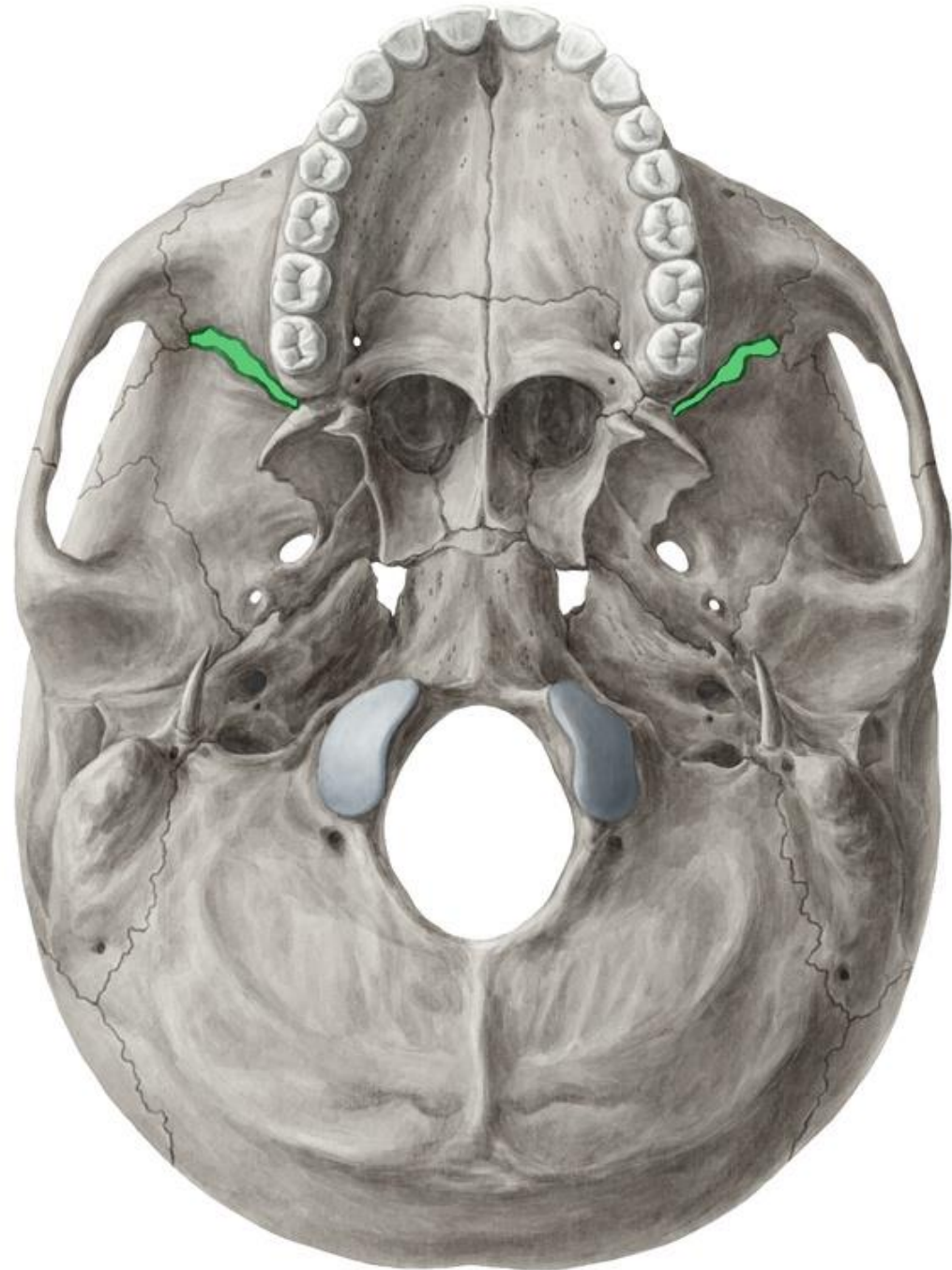
Accessory nerve

} Jugular foramen

Hypoglossal canal: Hypoglossal nerve

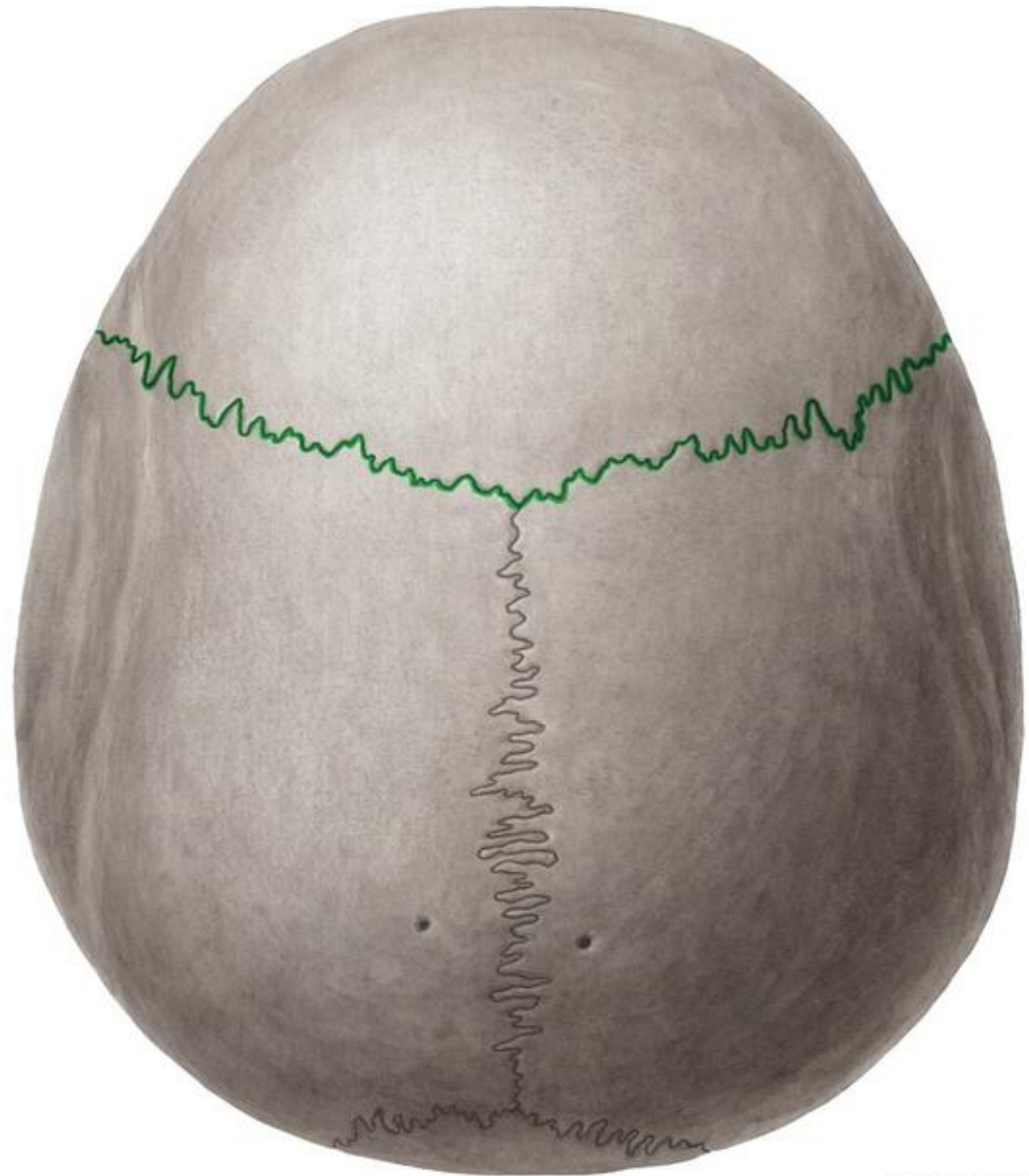
Identify the followings:

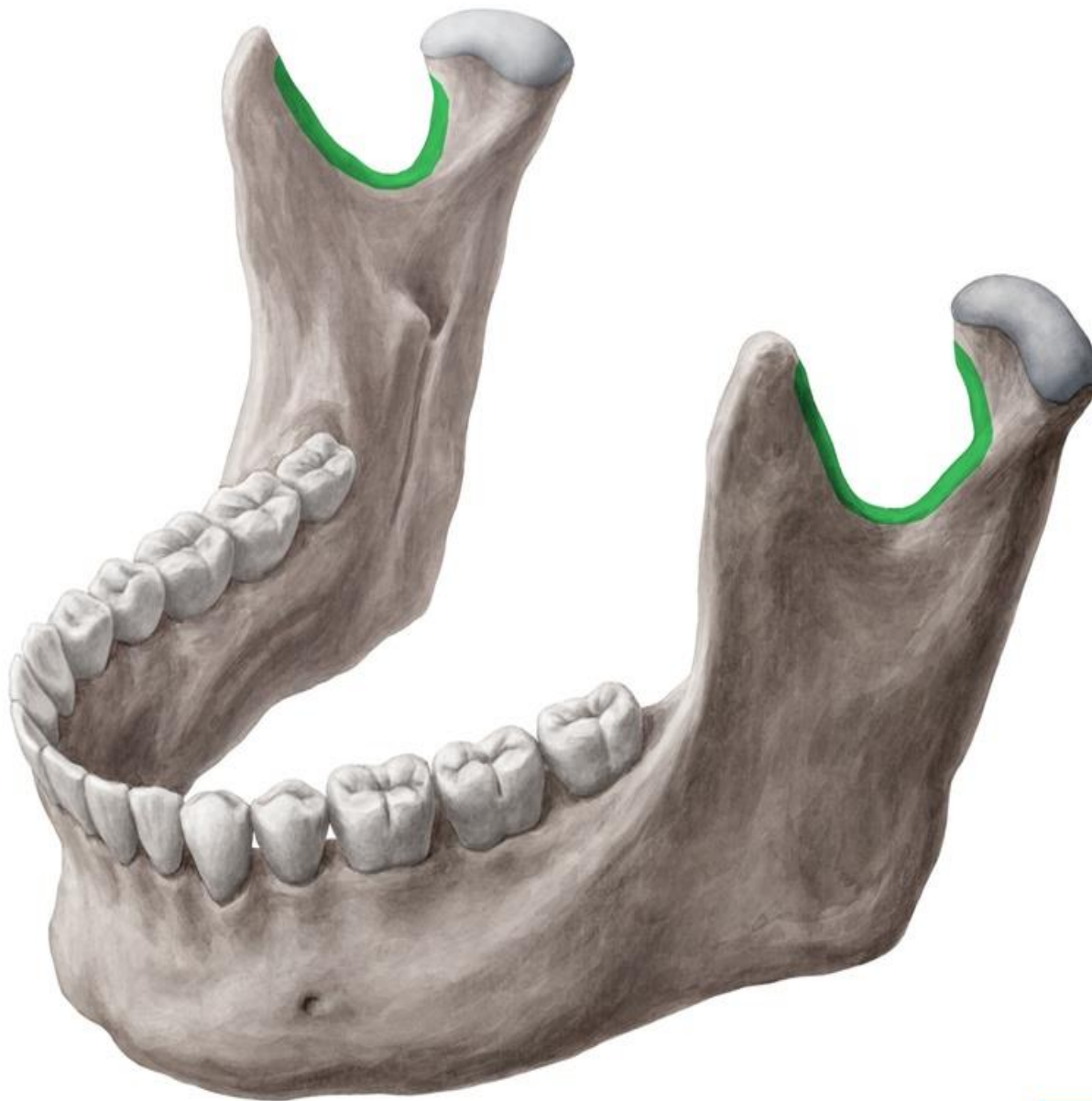
- Foramen magnum
- External occipital crest
- External occipital protuberance
- Inferior nuchal line
- Superior nuchal line
- Foramen ovale
- Foramen spinosum
- Foramen lacerum
- Opening for carotid canal
- Jugular foramen
- Hypoglossal canal
- Mastoid process
- Styloid process
- Stylomastoid foramen
- Occipital condyles



Identify the followings:

- Coronal suture
- Sagittal suture
- Lambdoid suture
- Bregma
- Lambda





Identify the followings:

Body

Ramus

Angle

Condylar process (head and neck)

Coronoid process

Mandibular notch

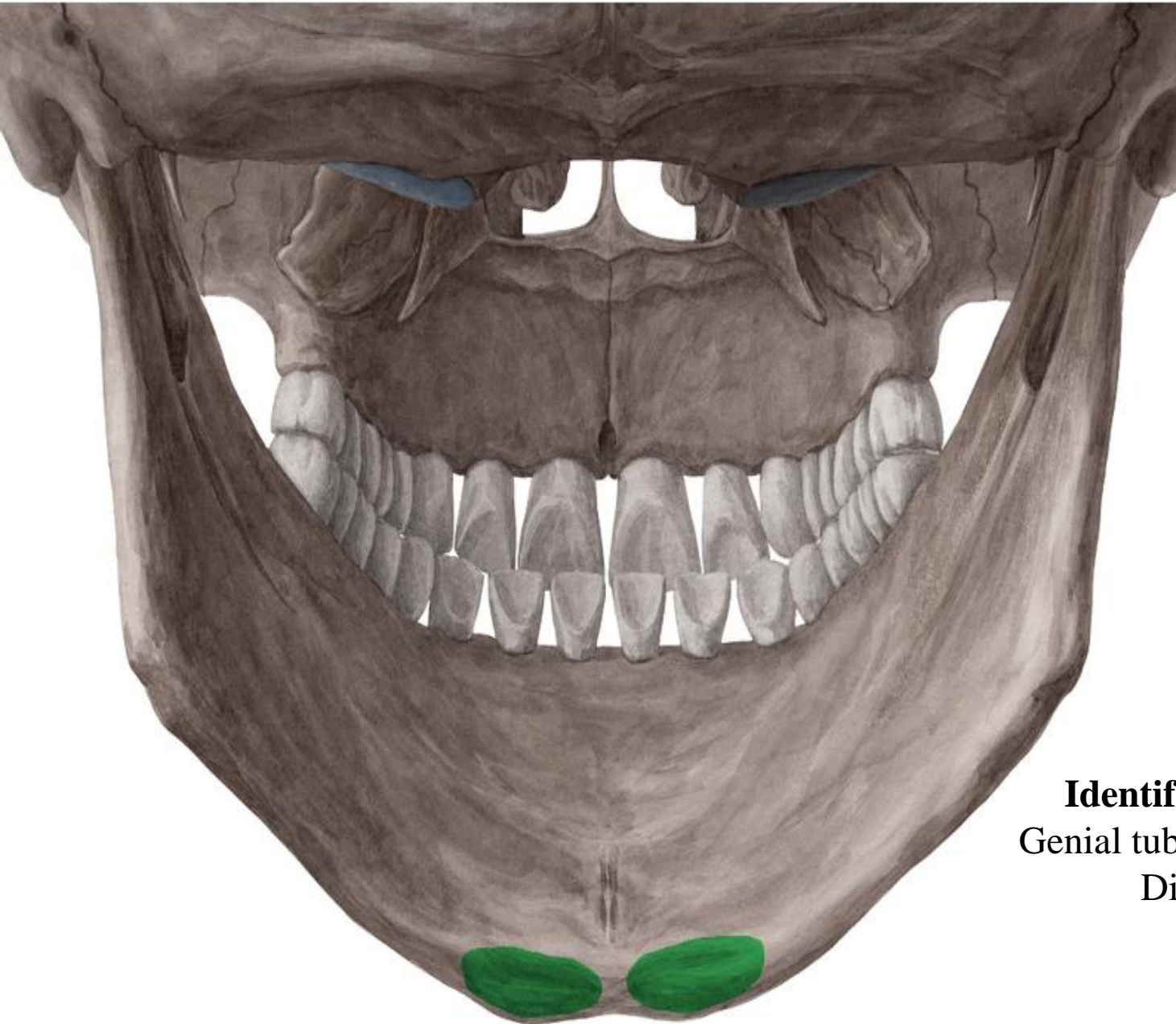
Mandibular foramen

Mental foramen

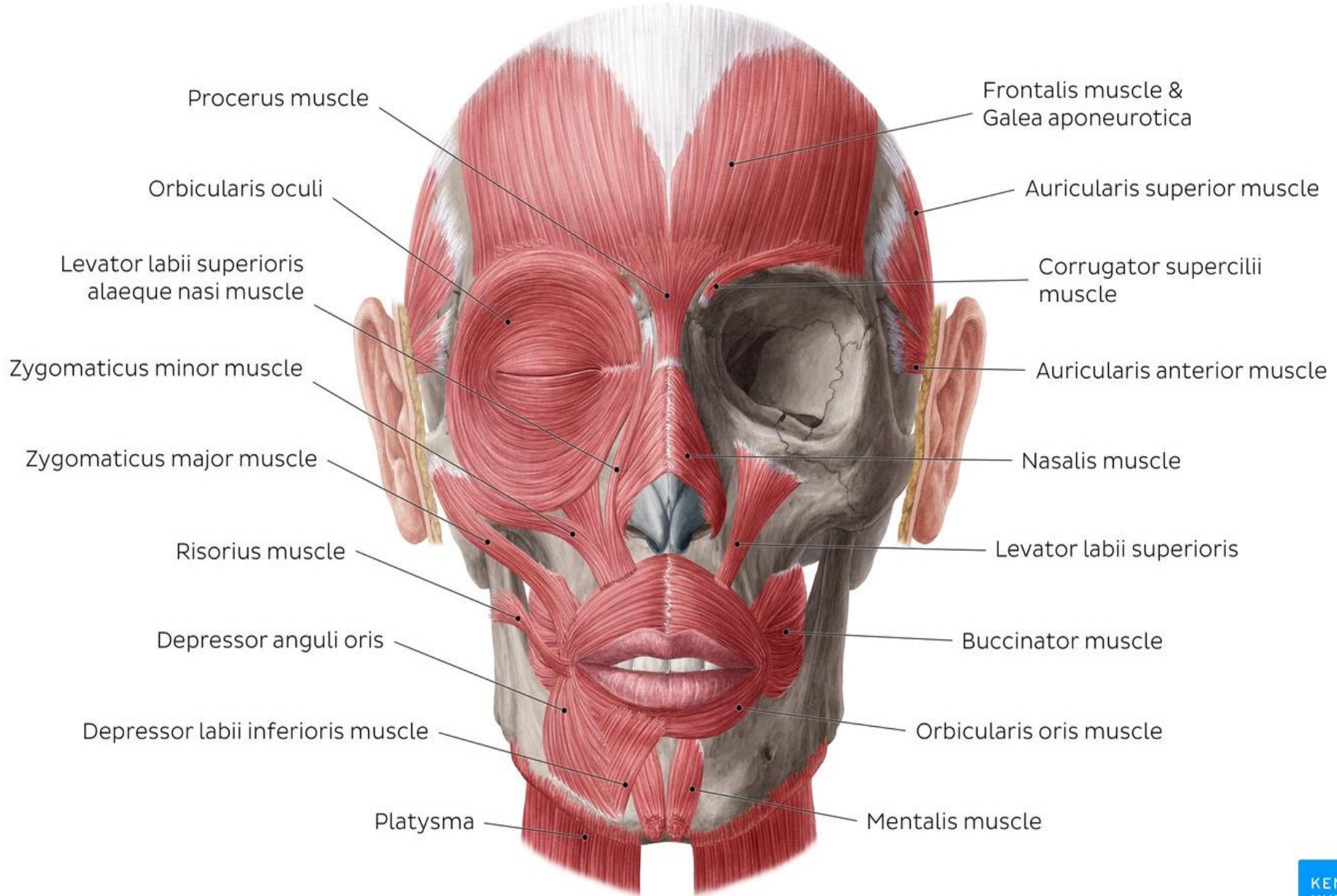
Mental protuberance

Mylohyoid groove

Mylohyoid line



Identify the followings:
Genial tubercle (Mental spine)
Digastric fossa



Identify the following muscles (action and nerve supply):
 Orbicularis oculi, orbicularis oris, buccinator, and frontalis

Identify the followings:

Parotid gland

Parotid duct

Buccinator

Submandibular gland

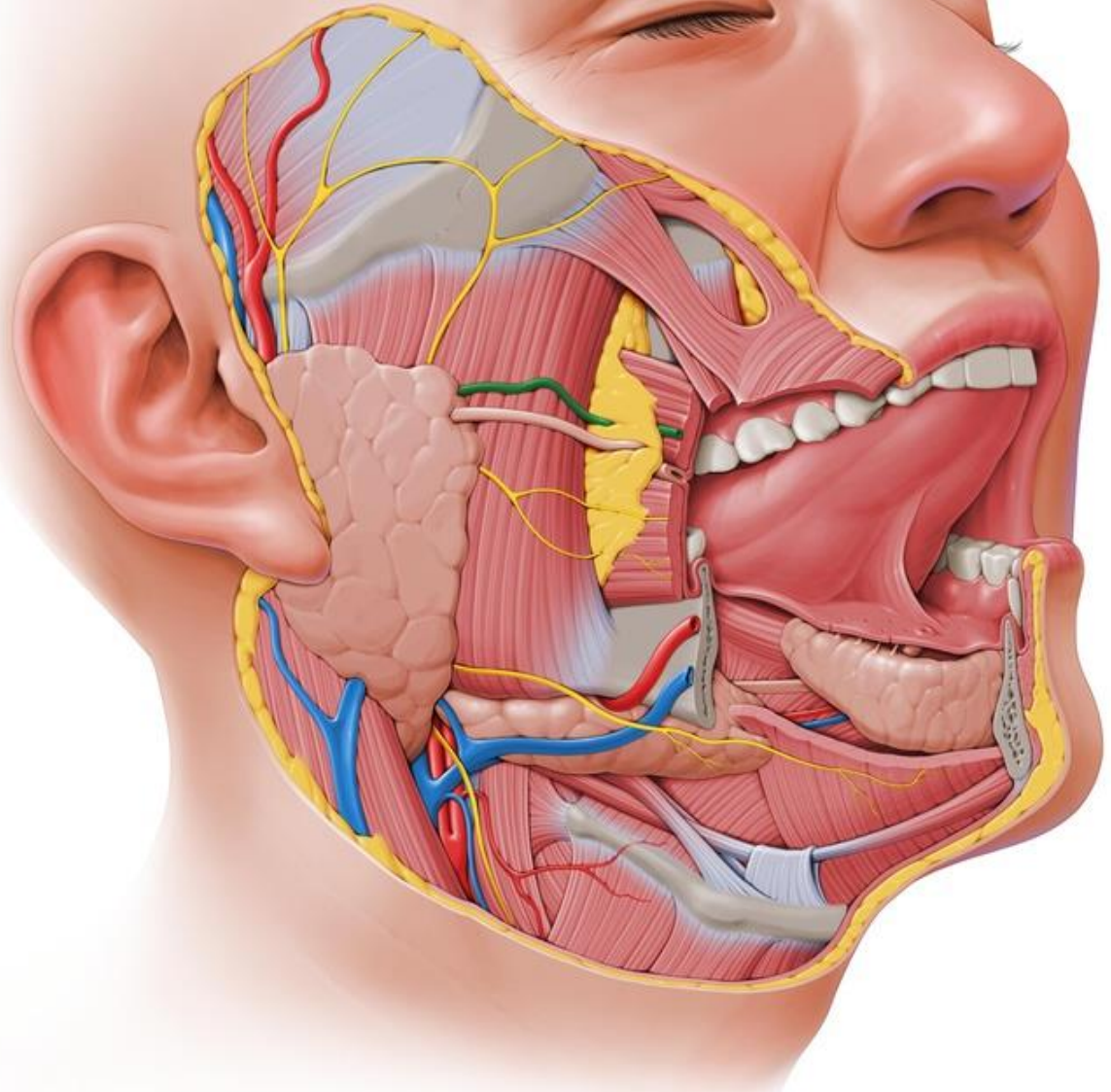
Facial artery

Facial vein

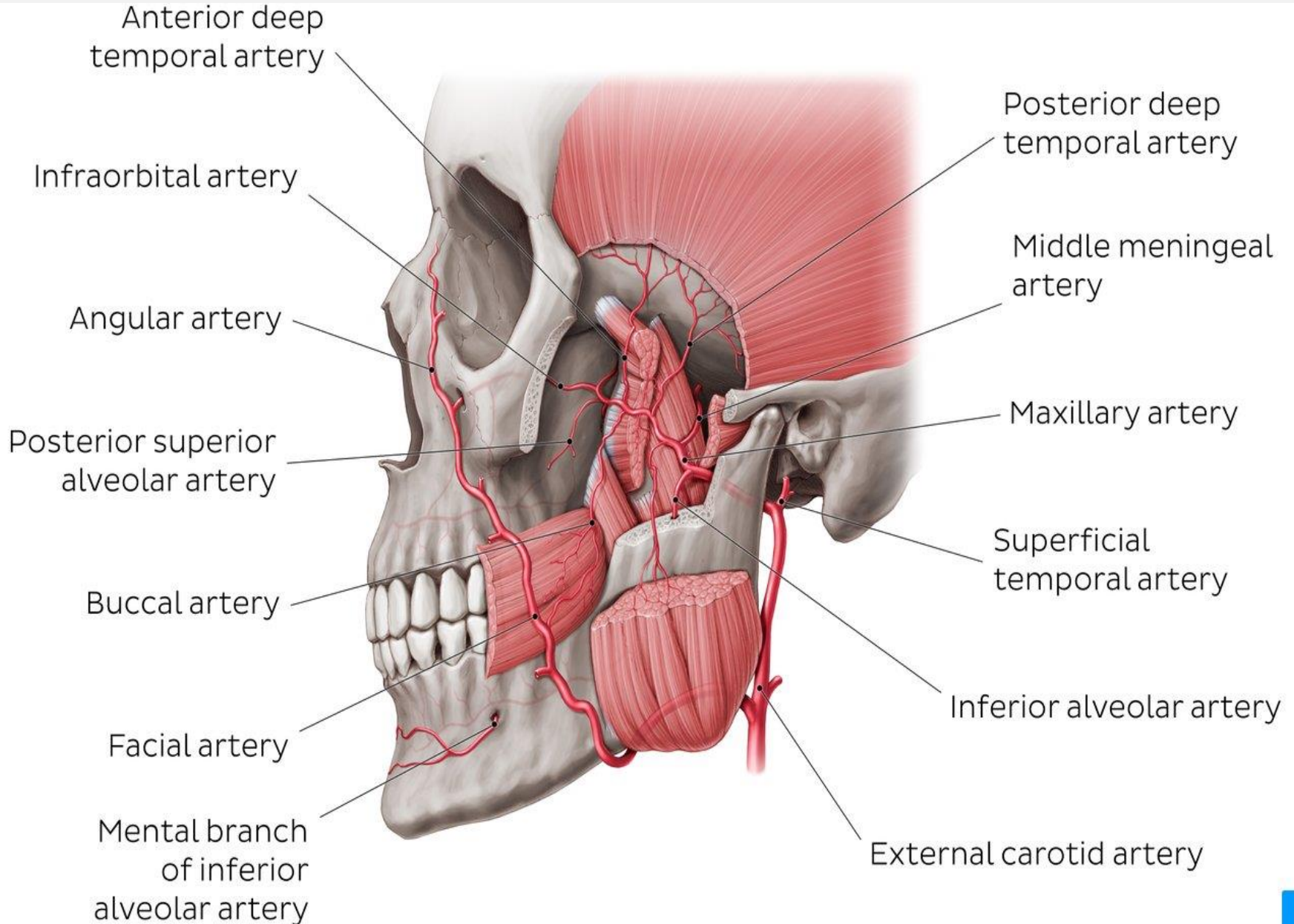
External jugular vein

Superficial temporal
artery

Branches of facial nerve

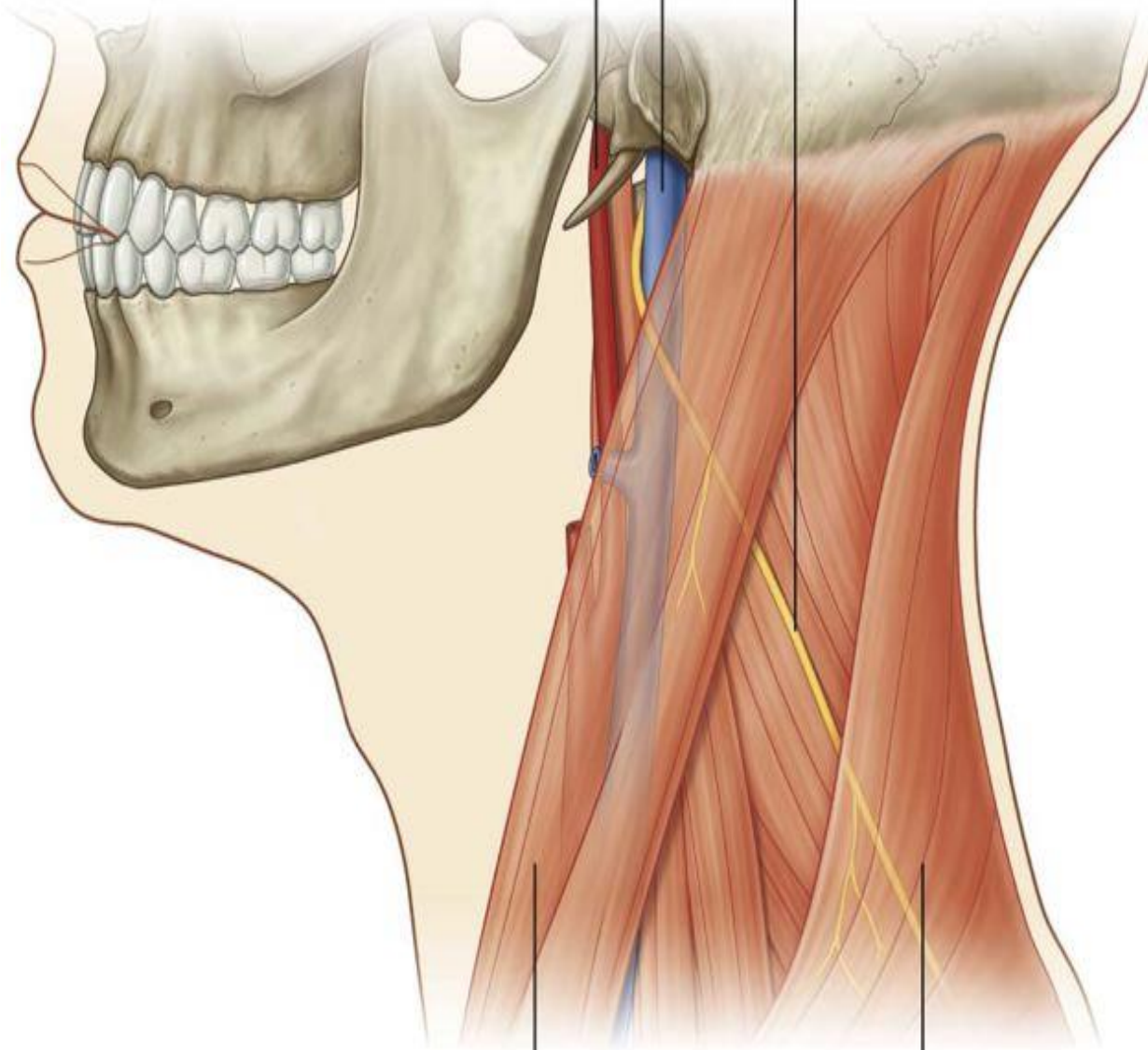


Identify the followings: External carotid artery, Facial artery, Maxillary artery, Middle meningeal artery, Superficial temporal artery



Internal carotid artery Internal jugular vein

Accessory nerve [XI]



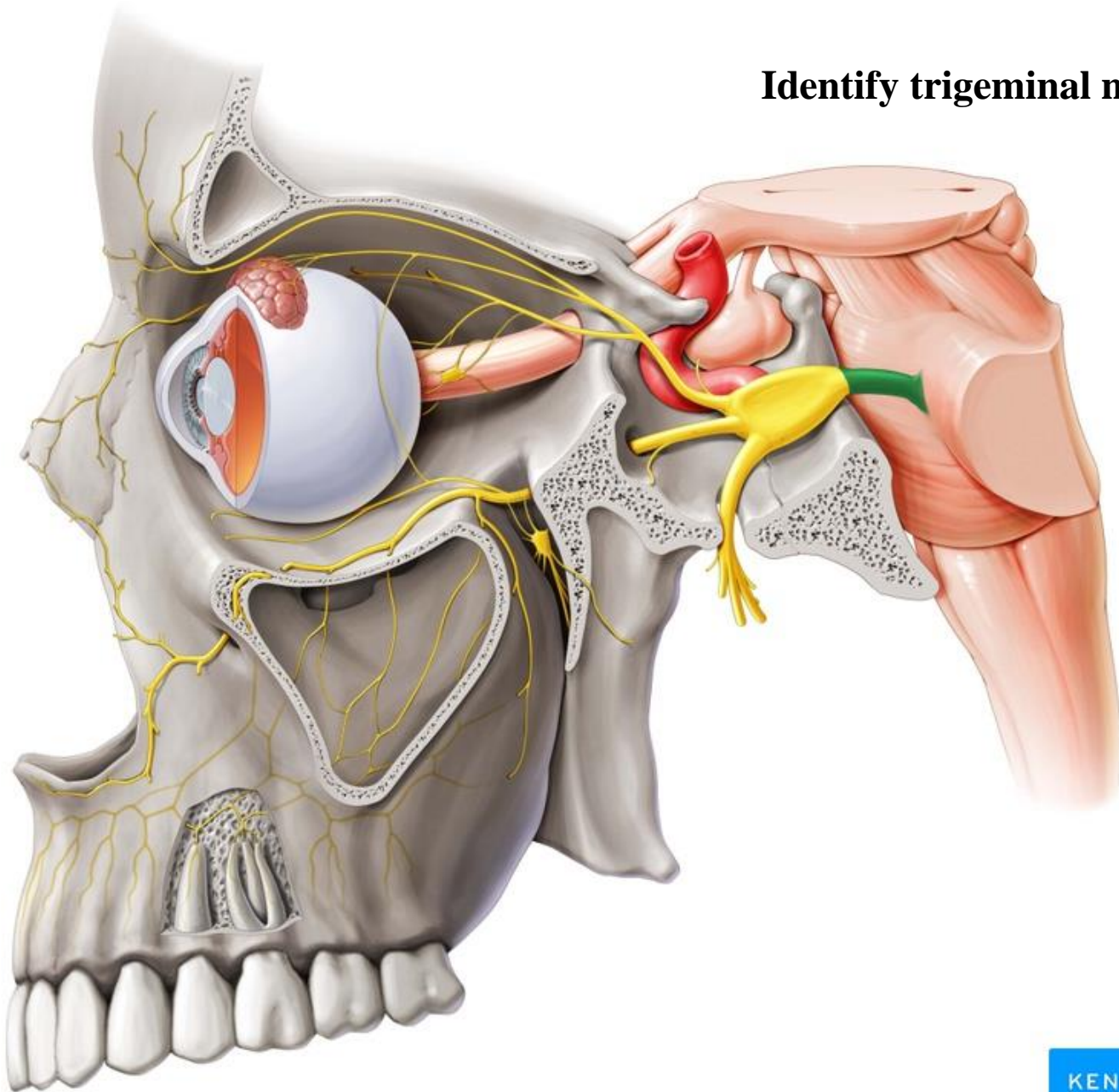
Sternocleidomastoid muscle

Trapezius muscle

Identify the followings:

- Common carotid artery
- External carotid artery
- Internal carotid artery
- Internal jugular vein
- Accessory nerve (spinal)

Identify trigeminal nerve and its branches



Orbital walls

Orbital walls

Roof:

Orbital plate of frontal bone (1)

Lesser wing of sphenoid (2)

Floor:

Orbital plate of maxilla (3)

Lateral wall:

Orbital plate of zygomatic bone (4)

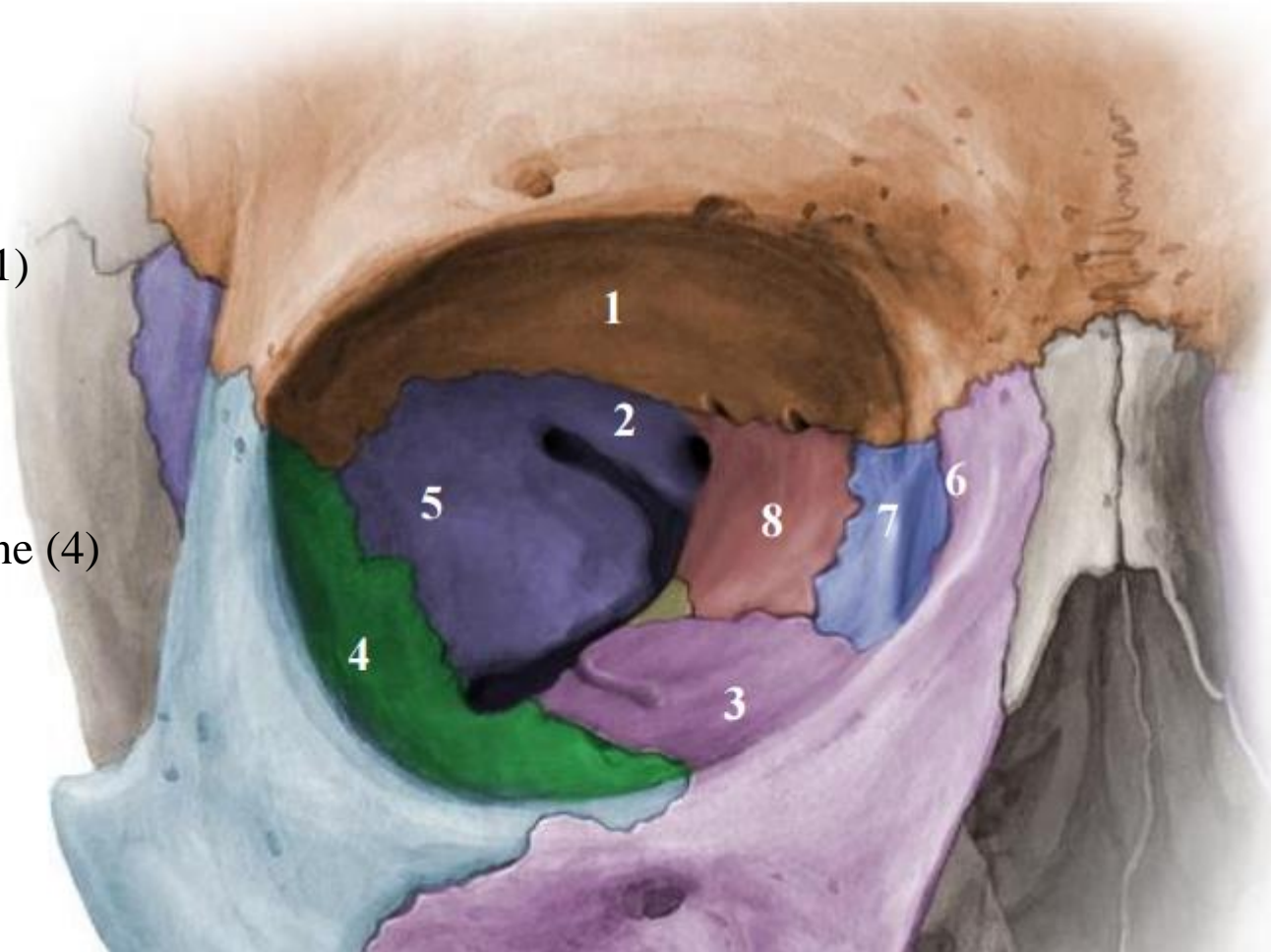
Greater wing of sphenoid (5)

Medial wall:

Frontal process of maxilla (6)

Lacrimal bone (7)

Orbital plate of ethmoid (8)



Foramina and fissures of the orbit

Foramina and fissures of the orbit (and structures passing through)

Superior orbital fissure
(9)

Inferior orbital fissure
(10)

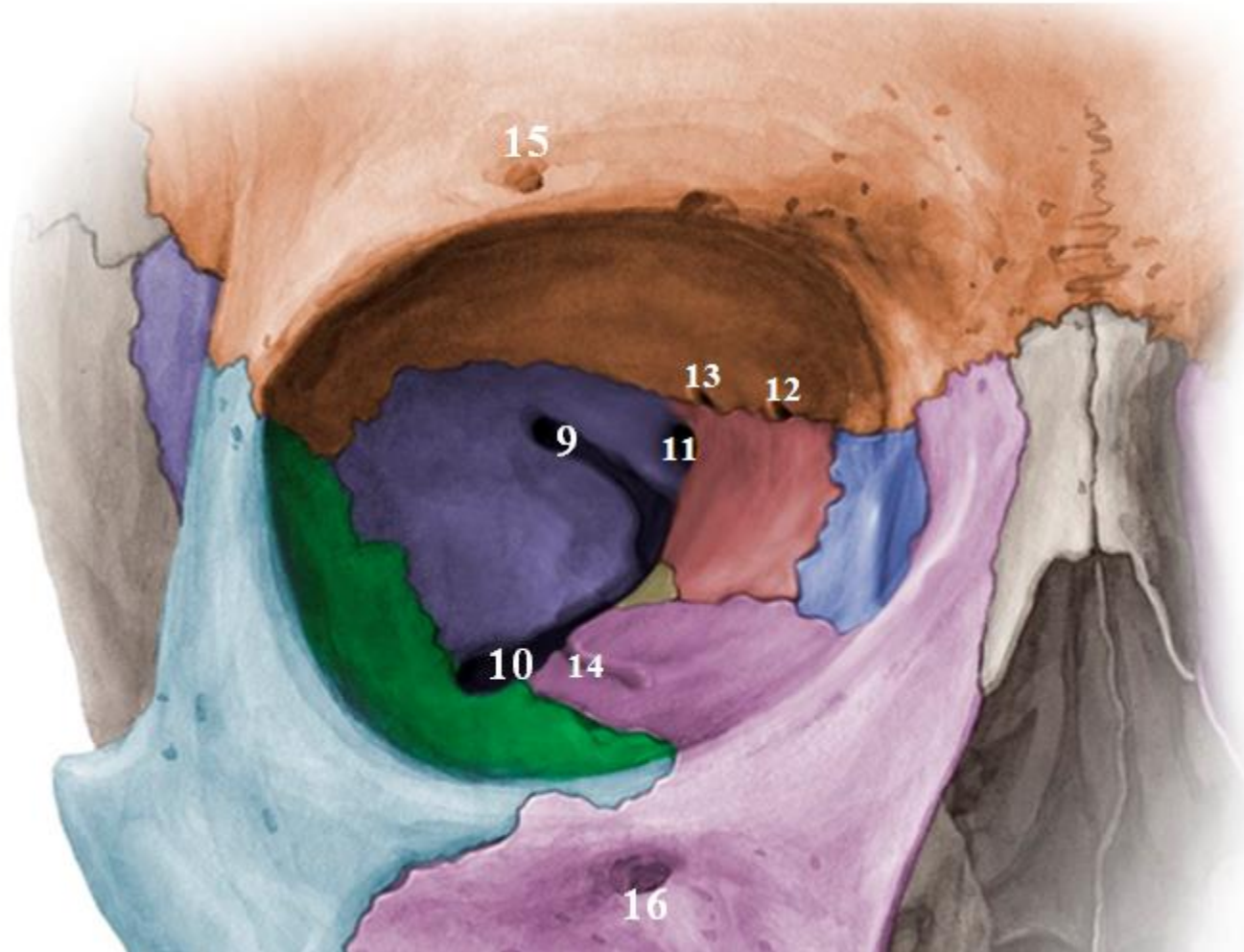
Optic canal (11)

Anterior and posterior
ethmoidal
foramina (12, 13)

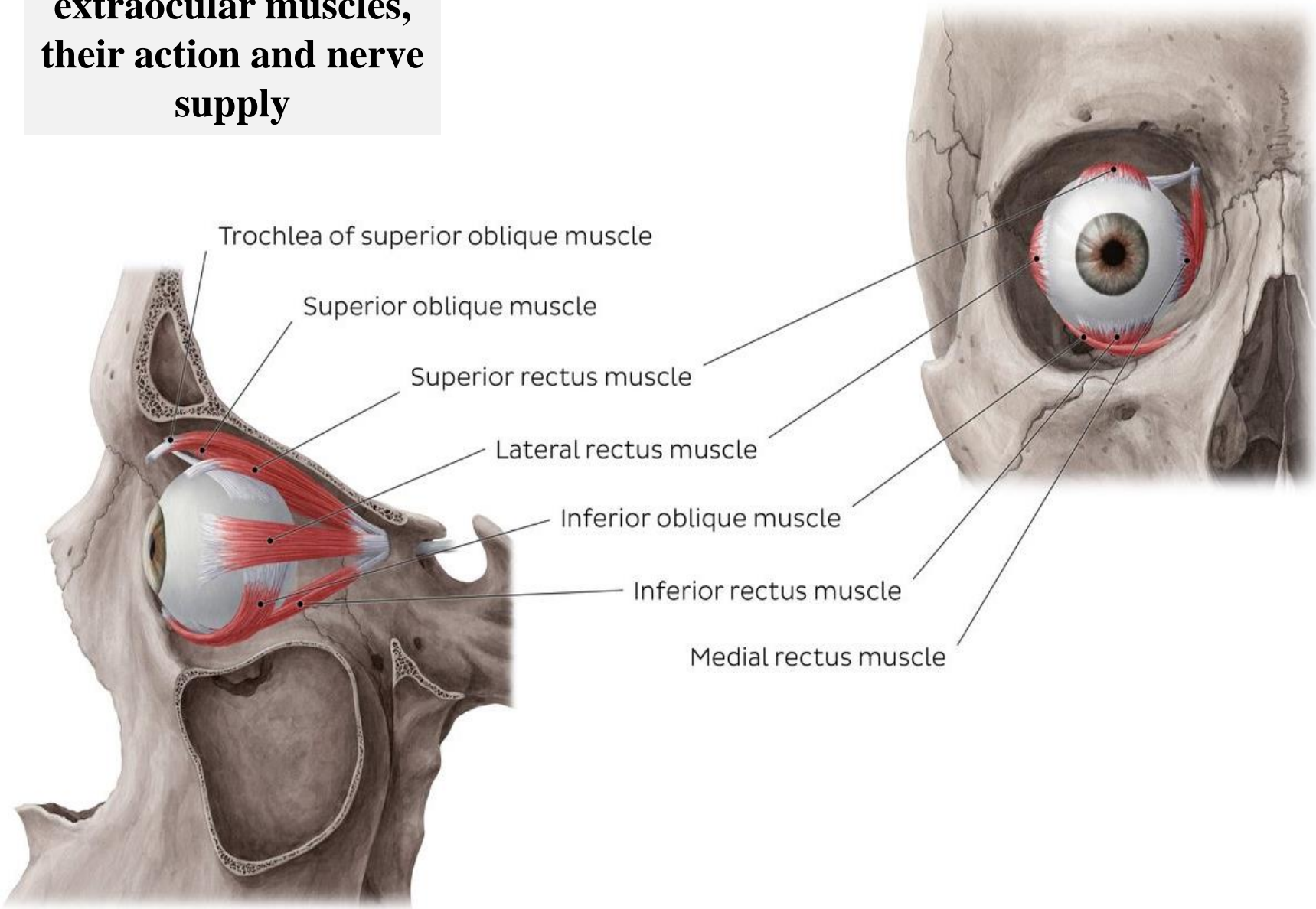
Infraorbital groove and
canal (14)

Supraorbital foramen (15)

Infraorbital foramen (16)



**Identify the
extraocular muscles,
their action and nerve
supply**



Identify the followings:

Inner, middle and inner ear

Pinna (auricle)

External acoustic meatus

Tympanic membrane

Umbo

Malleus

Incus

Stapes

Eustachian tube

Tegmen tympani

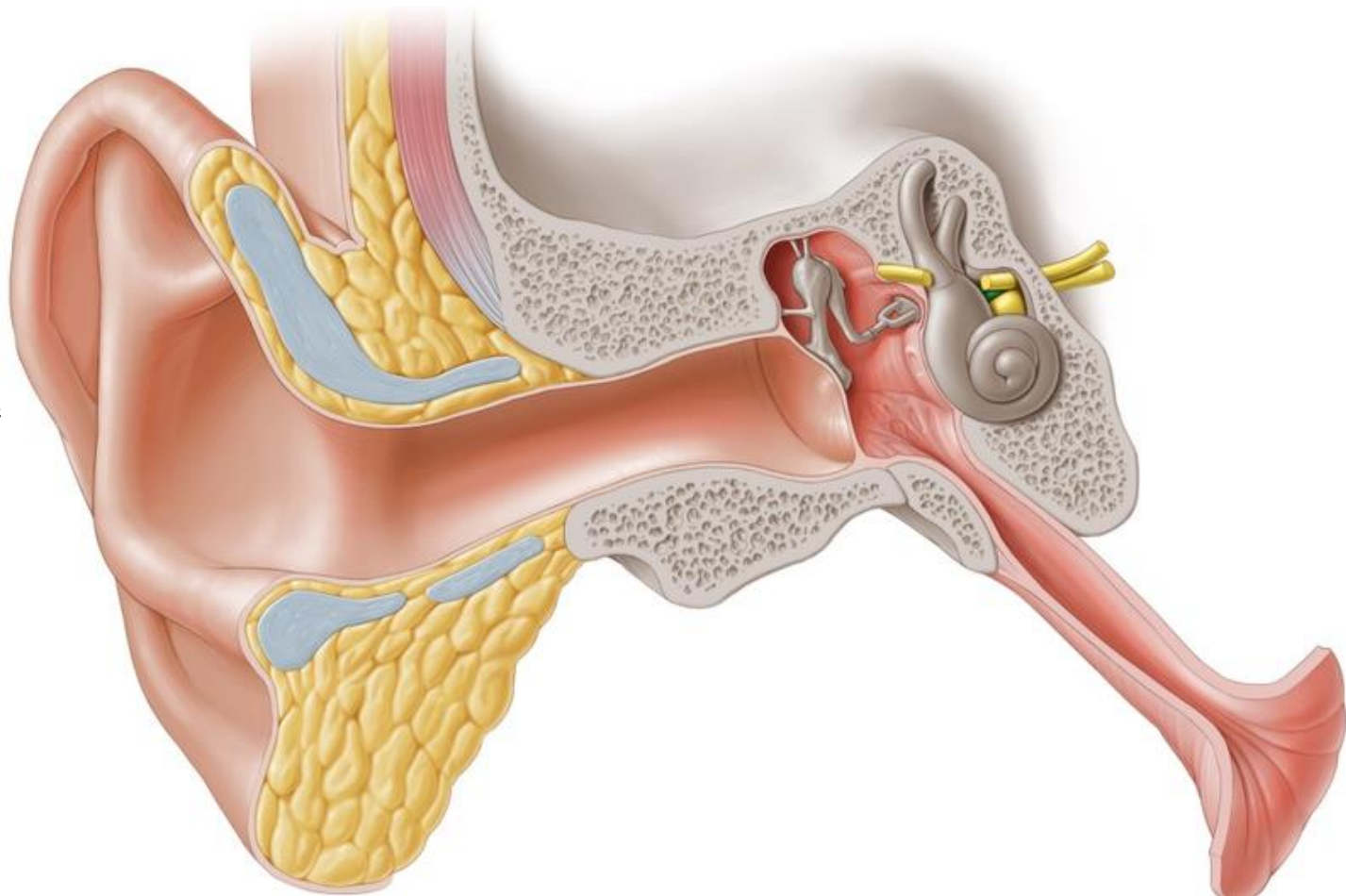
Semicircular canals

Vestibule

Cochlea

Facial nerve

Vestibulocochlear nerve

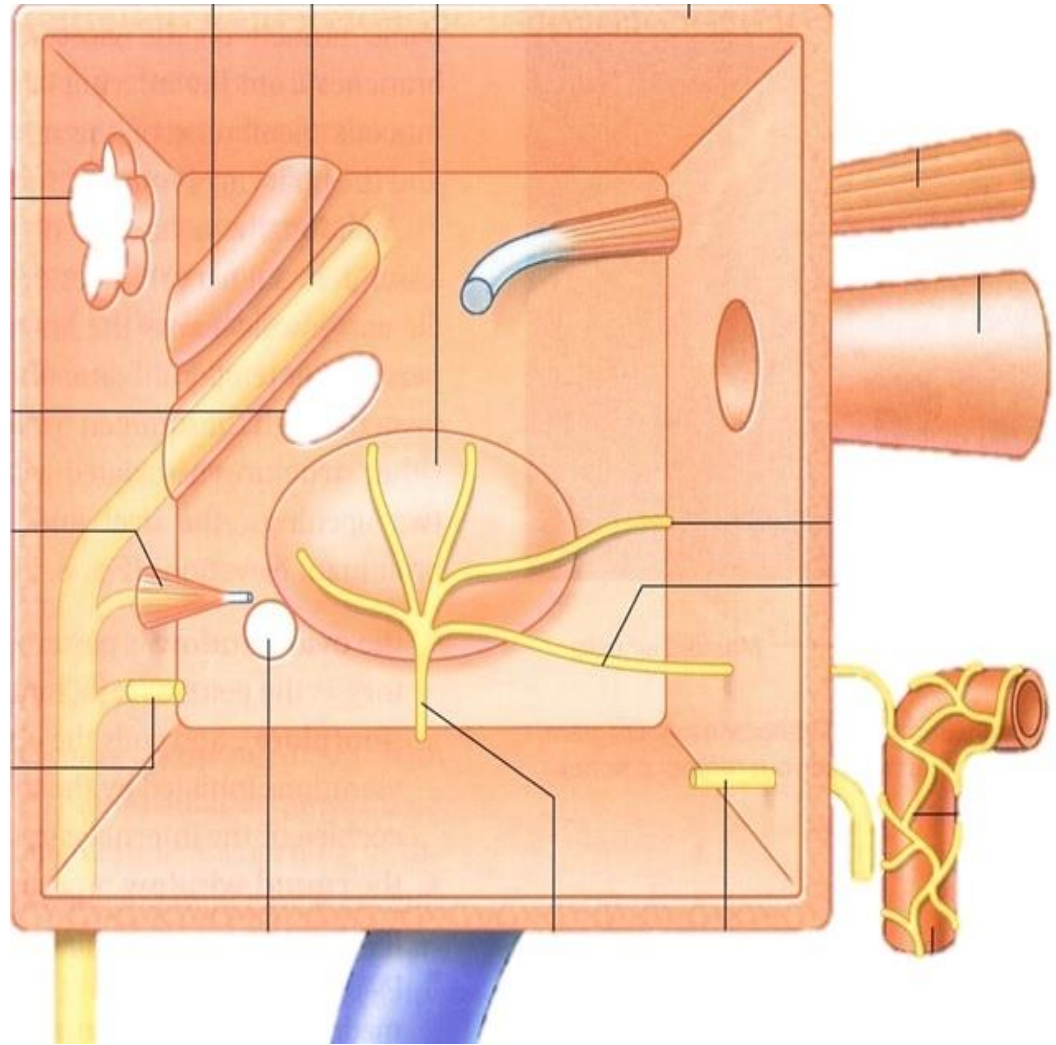


Middle ear

Identify the followings :

- Anterior wall
- Medial wall
- Posterior wall
- Roof
- Floor

- Canal for tensor tympani
- Eustachian tube
- Internal carotid artery
- Sympathetic carotid plexus
- Internal jugular vein
- Oval window
- Round window
- Promontory
- Tympanic plexus
- Facial canal
- Aditus to mastoid
- Pyramid and stapedius muscle
- Chorda tympani



Identify the followings:

Outer fibrous coat

Cornea

Sclera

Middle vascular coat

Choroid

Ciliary body

Iris

Inner nervous coat

Retina

Corneoscleral junction (limbus)

Pupil

Lens

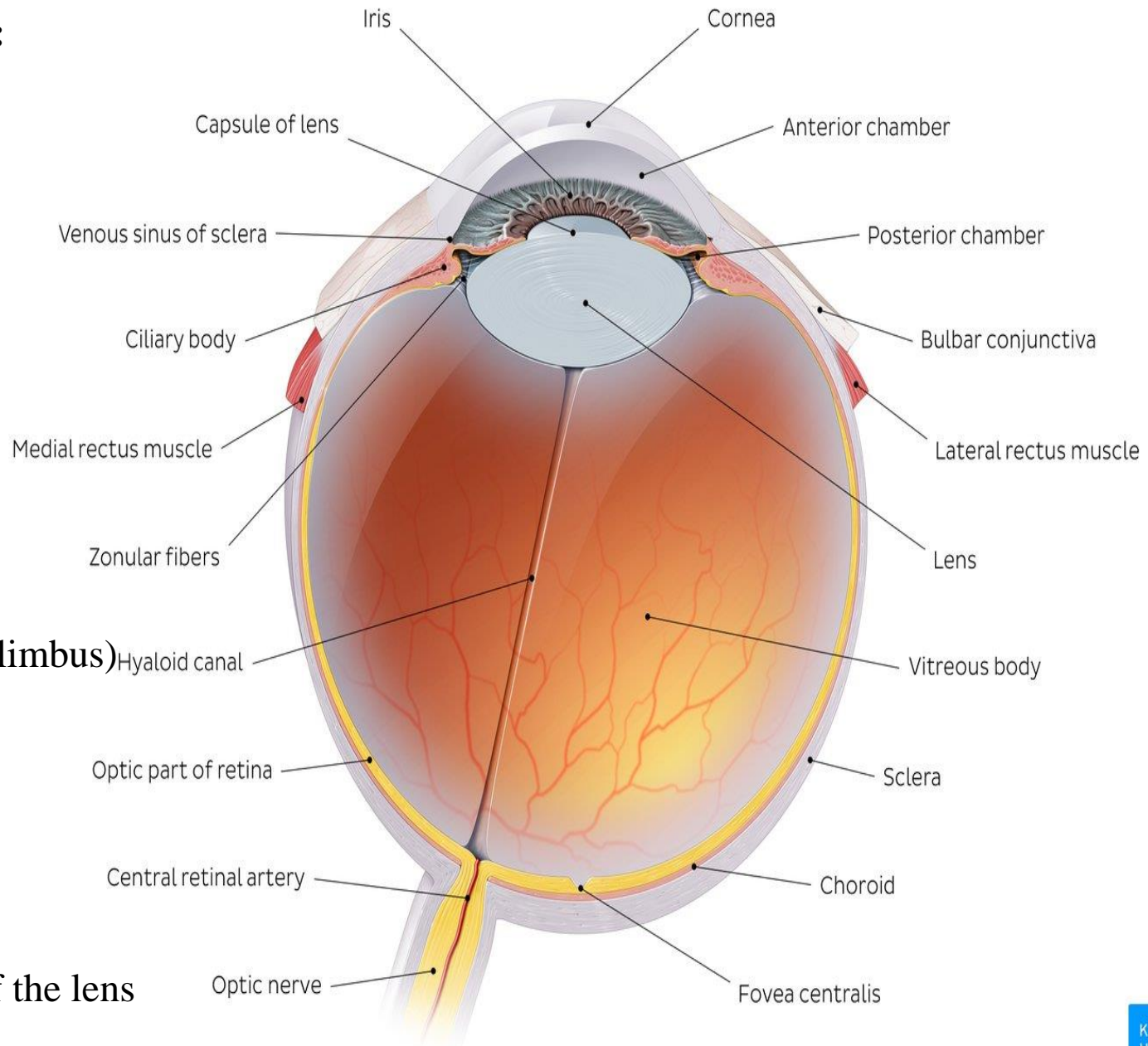
Anterior chamber

Posterior chamber

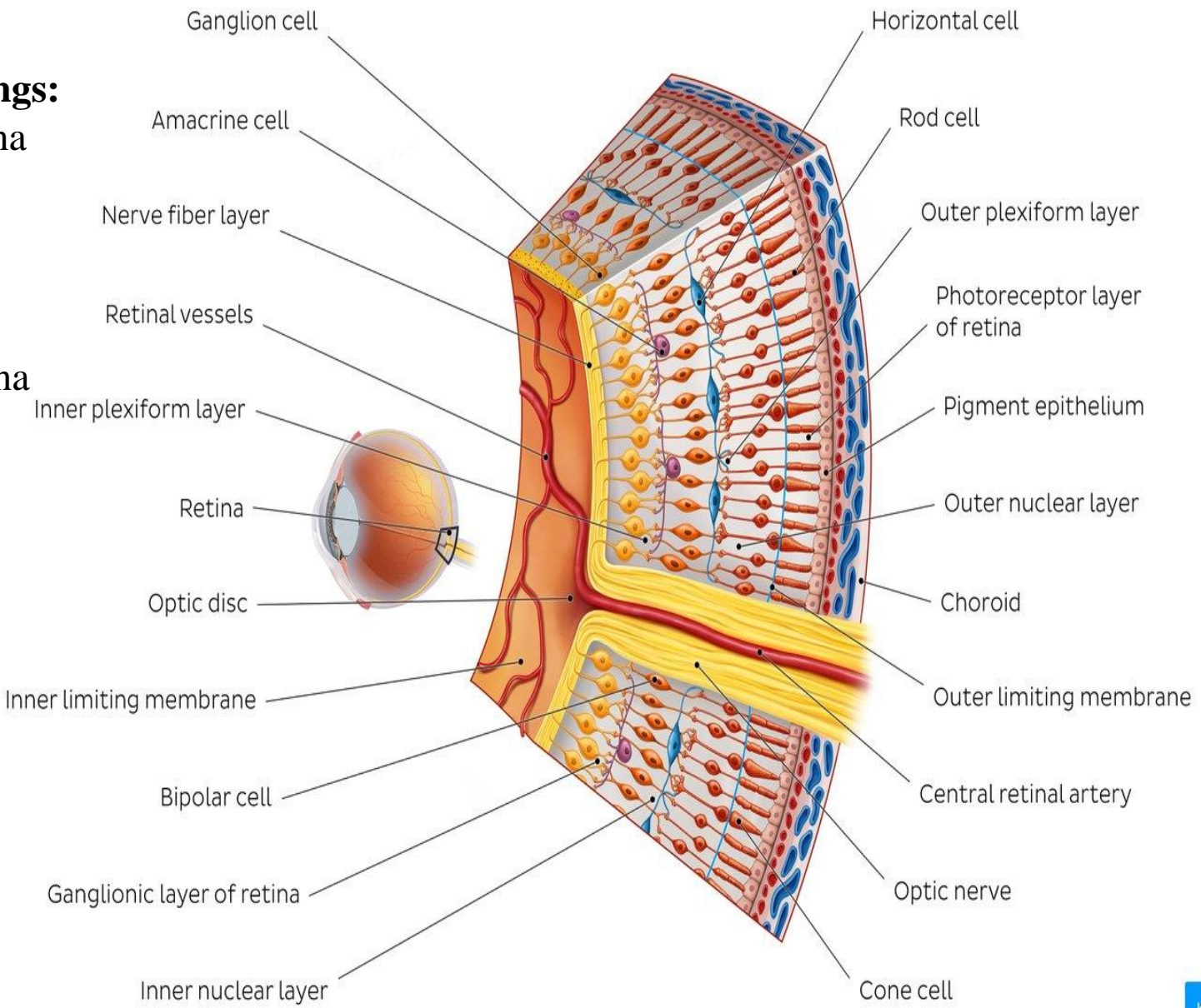
Aqueous humor

Vitreous body

Suspensory ligaments of the lens



Identify the followings:
 The 10 layers of retina
 The cells of retina
 Choroid
 Optic disc
 Optic nerve
 Central artery of retina



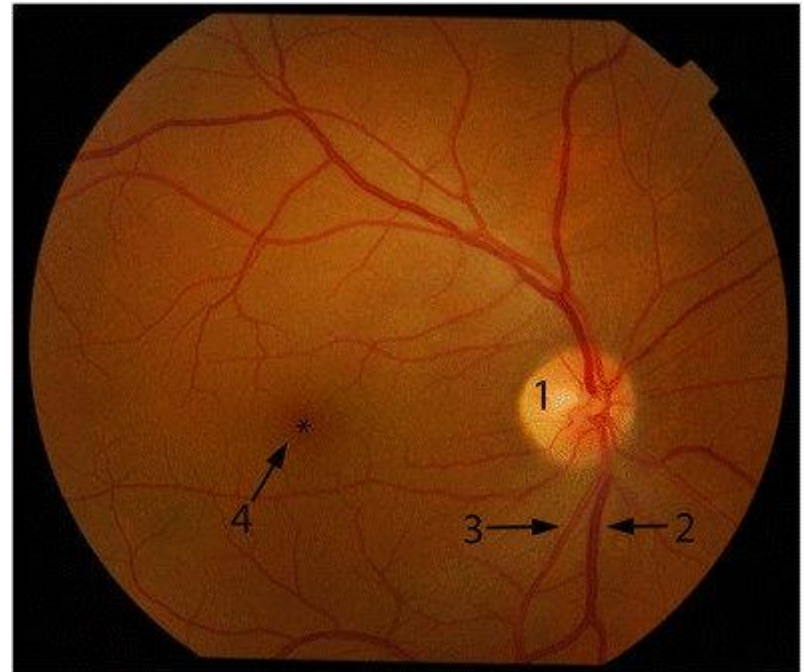
Identify the followings:

Optic disc

Macula lutea

Fovea centralis

Retinal vessels



Identify the sternocleidomastoid, suprahyoid and infrahyoid muscles, their action and nerve supply

