

## **Checklist- lab 2**

### **Base of the skull- inferior view (Norma Basalis Externa)**

1. Palatine process of maxilla (hard palate)
2. Palatine bone (hard palate)
3. Incisive foramen
4. Greater palatine foramen
5. Vomer bone
6. Choanae (posterior nasal apertures)
7. Medial pterygoid plate
8. Lateral pterygoid plate
9. Foramen magnum
10. Occipital condyles
11. External occipital crest
12. External occipital protuberance
13. Inferior nuchal line
14. Superior nuchal line
15. Foramen ovale
16. Foramen spinosum
17. Foramen lacerum
18. Opening for carotid canal
19. Jugular foramen
20. Hypoglossal canal
21. Mastoid process
22. Styloid process
23. Stylomastoid foramen

## **Foramina for cranial nerves**

*Use the wire within each of the skull foramina to determine precisely each Cranial nerve exit*

**Olfactory nerves:** Cribriform plate of the ethmoid

**Optic nerve:** Optic canal

**Oculomotor nerve**  
**Trochlear nerve**  
**Abducent nerve** } Superior orbital fissure

**Trigeminal nerve**

**Ophthalmic nerve (branches):** Superior orbital fissure

**Maxillary nerve:** Foramen rotundum

**Mandibular nerve:** Foramen ovale

**Facial nerve:** Internal acoustic meatus, stylomastoid foramen

**Vestibulocochlear nerve:** Internal acoustic meatus

**Glossopharyngeal nerve**  
**Vagus nerve**  
**Accessory nerve** } Jugular foramen

**Hypoglossal canal:** Hypoglossal nerve

Note that the foramen rotundum (maxillary nerve) leads to Pterygo-palatine fossa

Note that the foramen ovale (mandibular nerve) leads to infratemporal fossa

**Use the wire within each of the skull foramina to determine precisely each Cranial nerve exit**

Note the superior orbital fissure opens anteriorly into orbit and posteriorly into middle cranial fossa

Note the inferior orbital fissure opens anteriorly into orbit and posteriorly into two fossae: one big ( infratemporal fossa) and one small (Pterygo-palatine fossa)

**Use the wire within each of the skull fissures to determine precisely the communications of superior and inferior orbital fissures**

## **Mandible**

1. Body
2. Ramus
3. Angle
4. Condylar process (head and neck)
5. Coronoid process
6. Mandibular notch
7. Pterygoid fovea
8. Lingula
9. Mandibular foramen
10. Alveolar process of mandible
11. Mental foramen
12. Mental protuberance
13. Mylohyoid groove
14. Mylohyoid line
15. Oblique line
16. Genial tubercle (Mental spine)
17. Digastrics fossa

## **Infra temporal fossa**

Boundaries

Anterior wall: back of the maxilla

Medial wall: lateral pterygoid plate

Roof: greater wing of sphenoid bone

Lateral wall: ramus of mandible

Communications

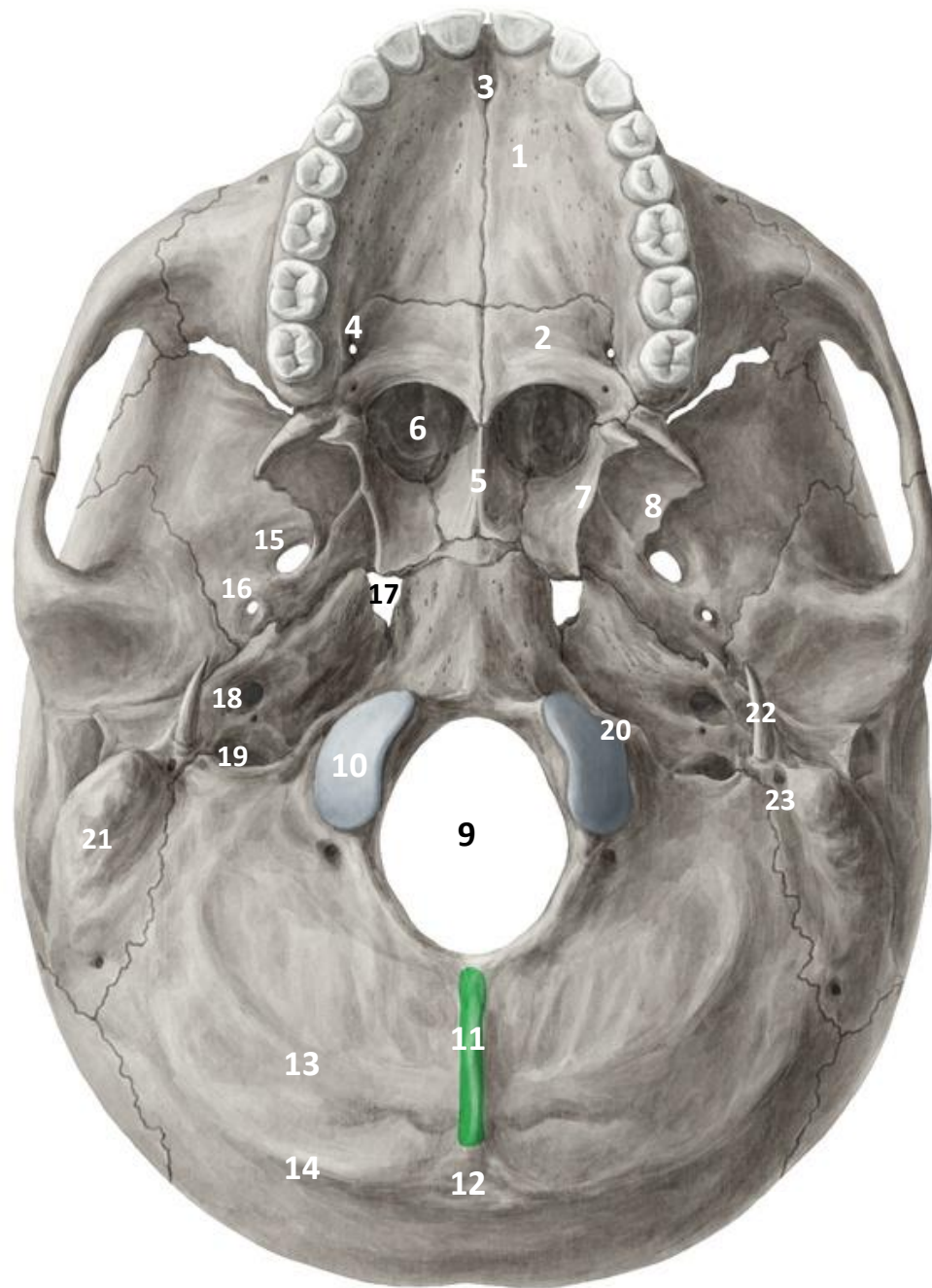
Temporal fossa: through the gap deep to the zygomatic arch

Orbit: through the inferior orbital fissure

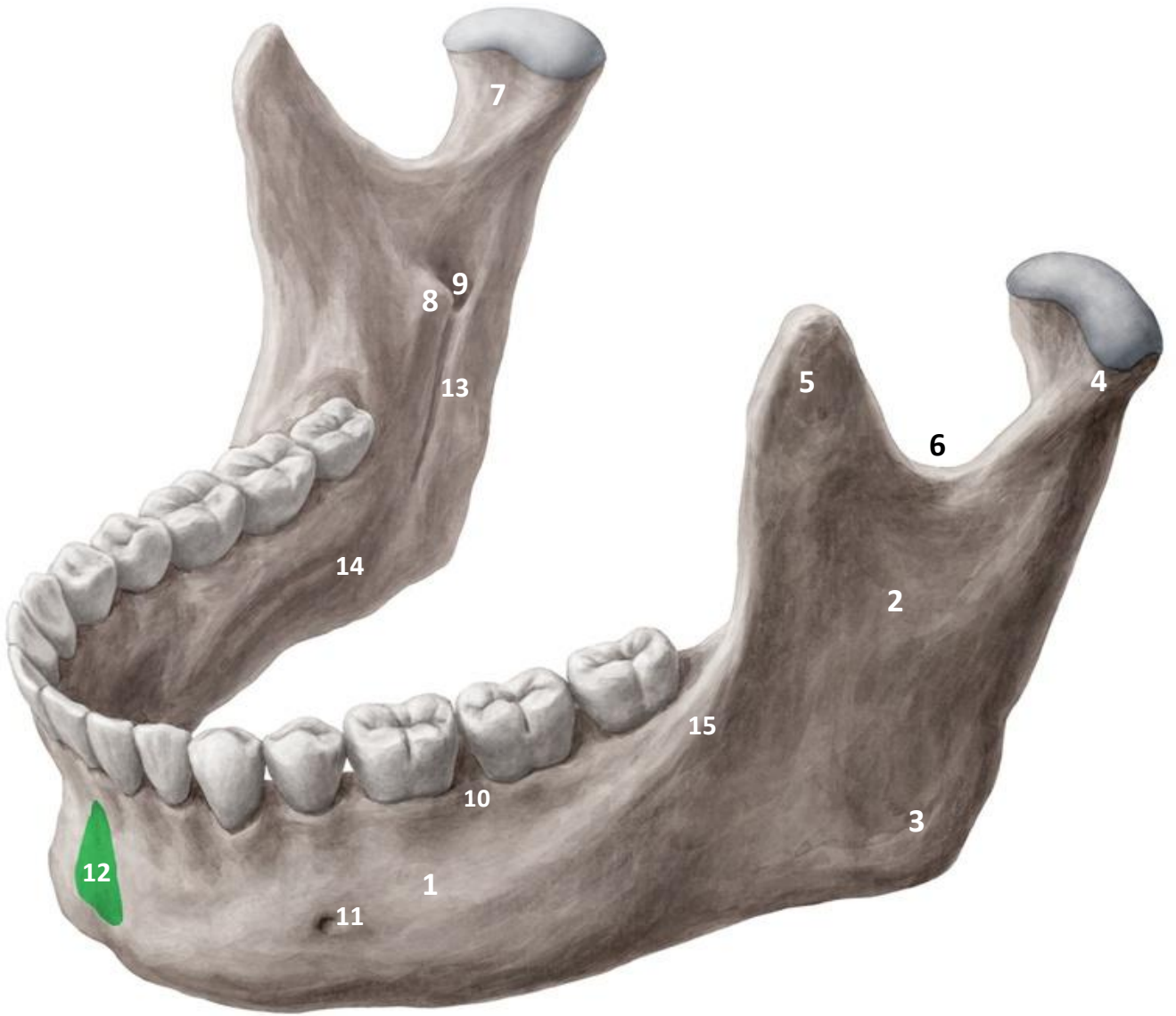
Pterygo-palatine fossa: through the pterygo-maxillary fissure

Middle cranial fossa: through foramen ovale and spinosum

**Use the wire within inferior orbital fissure, pterygomaxillary fissure, ovale and spinosum to determine precisely the communications of infratemporal fossa**



**Norma Basalis Externa**



# Mandible