

Check list- lab 1

Skull (Norma Frontalis, Lateralis, Verticalis, Occipitalis, basalis interna)

Identify the following Bones

1. Frontal bone
2. Nasal bone
3. Maxilla
4. Zygomatic bone
5. Mandible
6. Parietal bone
7. Occipital bone
8. Temporal bone
9. Sphenoid bone
10. Vomer bone
- Ethmoid bone
- Palatine bone

Identify the following parts

- 1- Frontal bone
 - A. Frontal eminence
 - B. Superciliary arches
 - C. Supraorbital notch, or foramen
 - D. Glabella
 - E. Nasion
 - F. Orbital plate

- 3- Maxilla
 - A. Body
 - B. Frontal process
 - C. Zygomatic process
 - D. Alveolar process
 - E. Orbital plate
 - F. Anterior nasal spine
 - G. Infraorbital foramen
 - H. Palatine process

4- Zygomatic bone

- A. Frontal process
- B. Temporal process
- C. Maxillary process
- D. Zygomaticofacial foramen
- E. Zygomaticotemporal foramen (on post surface of zygomatic)
- F. Orbital plate

6- Parietal bone:

- A. Parietal foramen

7- Occipital bone:

- A. External occipital protuberance
- B. External occipital crest
- C. Superior nuchal lines
- D. Inferior nuchal lines
- E. Foramen magnum
- F. Occipital condyles

8- Temporal bone:

- A. Mastoid process
- B. Styloid process
- C. Squamous part
- D. Zygomatic process
- E. Petrous part
- F. External auditory meatus
- G. Mandibular fossa
- H. Articular tubercle

9- Sphenoid bone

- A. Body
- B. Lesser wing
- C. Greater wing
- D. Medial pterygoid plate
- E. Lateral pterygoid plate

Identify the following sutures and areas:

- A. Coronal suture
- B. Sagittal suture
- C. Lambdoid suture
- D. Bregma
- E. Lambda
- F. Pterion

Norma Basalis Interna
Base of the skull- Superior view

Anterior cranial fossa

Middle cranial fossa

Posterior cranial fossa

1. Orbital plates of the frontal bone
2. Cribriform plate of the ethmoid
3. Frontal crest
4. Crista galli
5. Foramen caecum
6. Lesser wing of sphenoid
7. Anterior clinoid process
8. Body of sphenoid
9. Foramen magnum
10. Greater wing of the sphenoid
11. a- Squamous part of the temporal bone
b- petrous part of the temporal bone
12. Posterior clinoid process
13. Optic canal
14. Foramen rotundum
15. Foramen ovale
16. Foramen spinosum
17. Foramen lacerum
18. Carotid canal
19. Jugular foramen
20. Hypoglossal canal
21. Internal acoustic meatus
22. Internal occipital crest
23. Internal occipital protuberance
24. Clivus
25. Cerebellar fossa

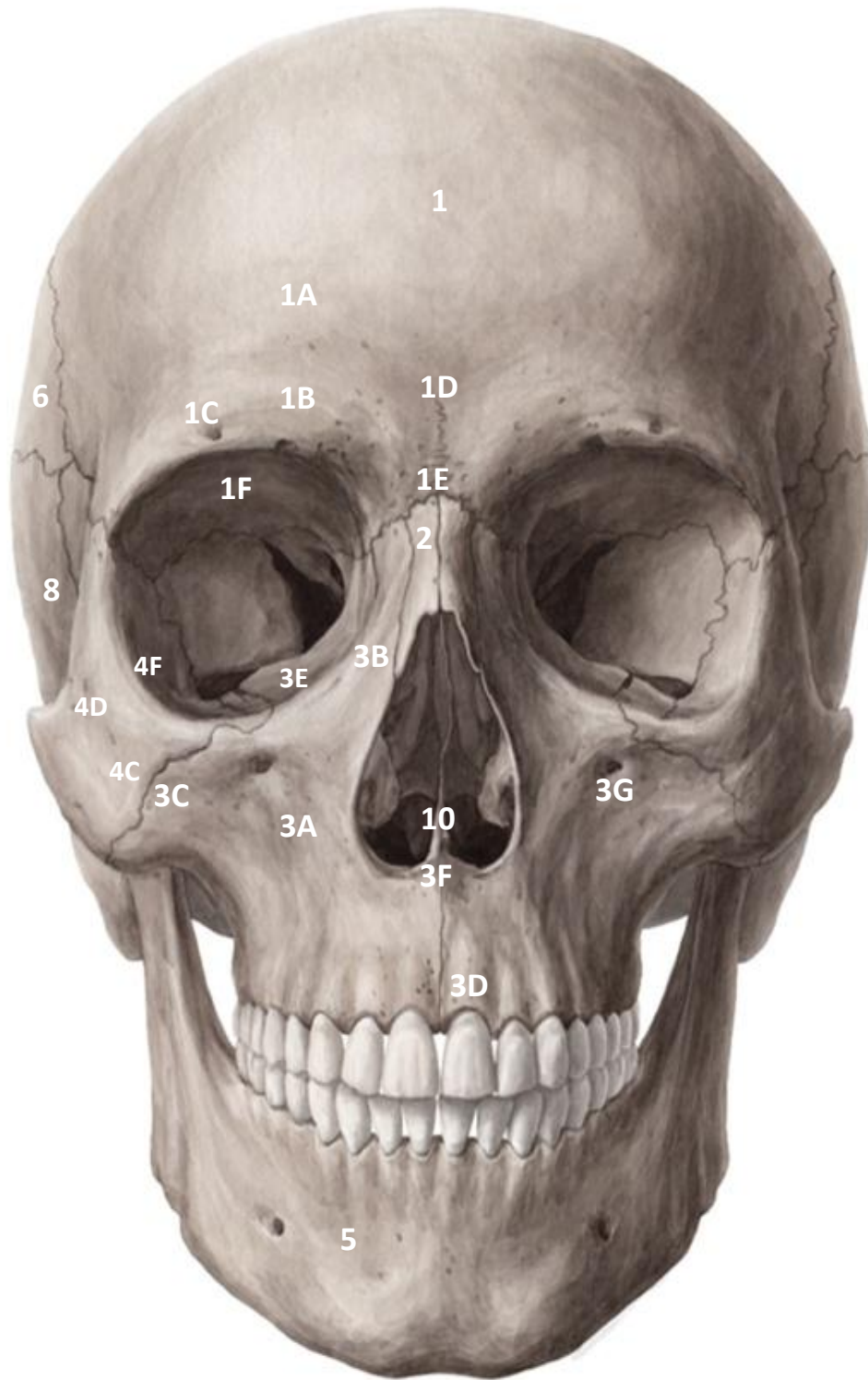
Body of sphenoid

- 1- Sulcus chiasmaticus
- 2- Tuberculum sellae
- 3- Sella turcica
- 4- Dorsum sellae
- 5- Optic canal
- 6- Posterior clinoid process

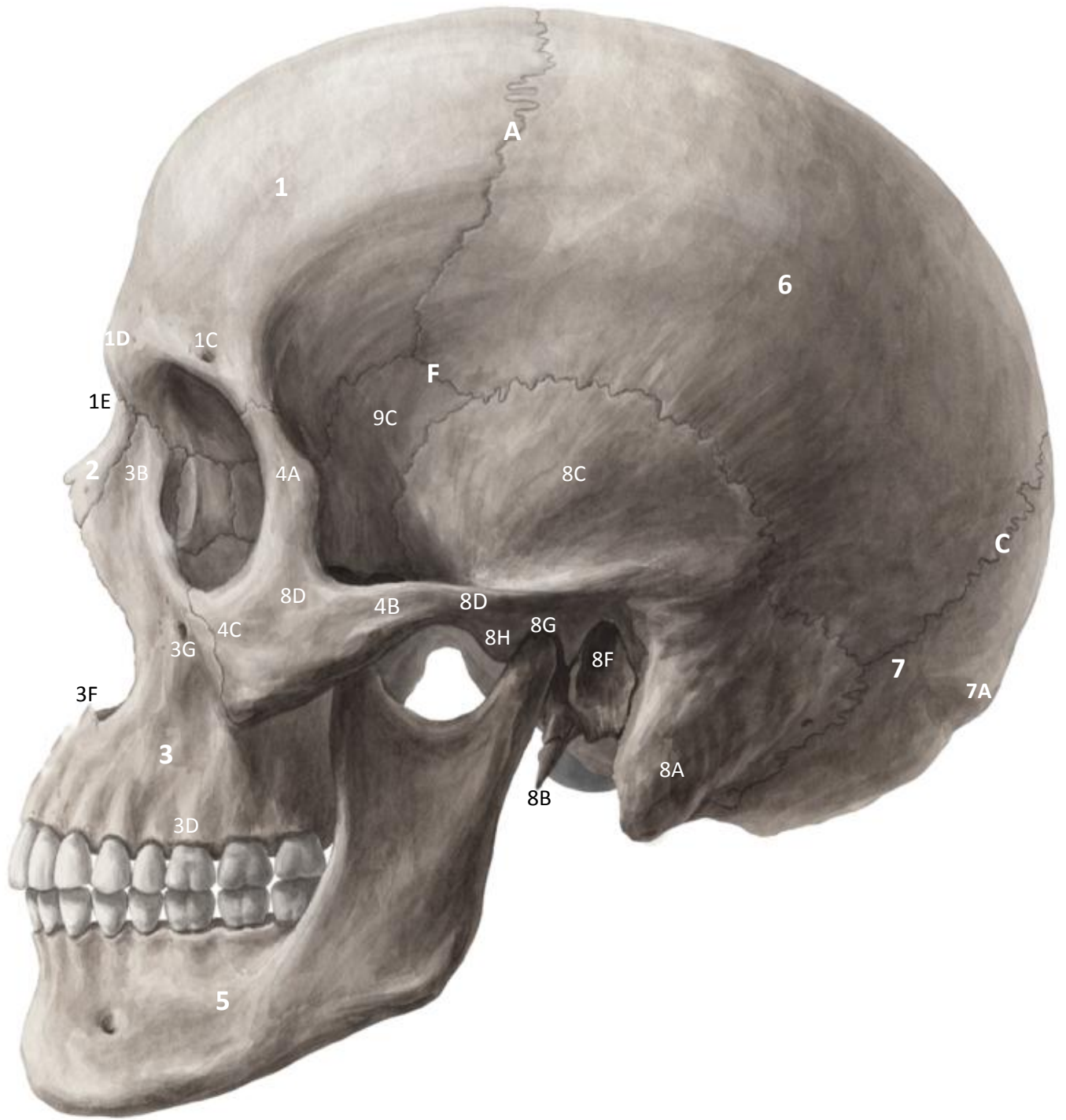
Note:

Medial to anterior clinoid process is **optic canal**

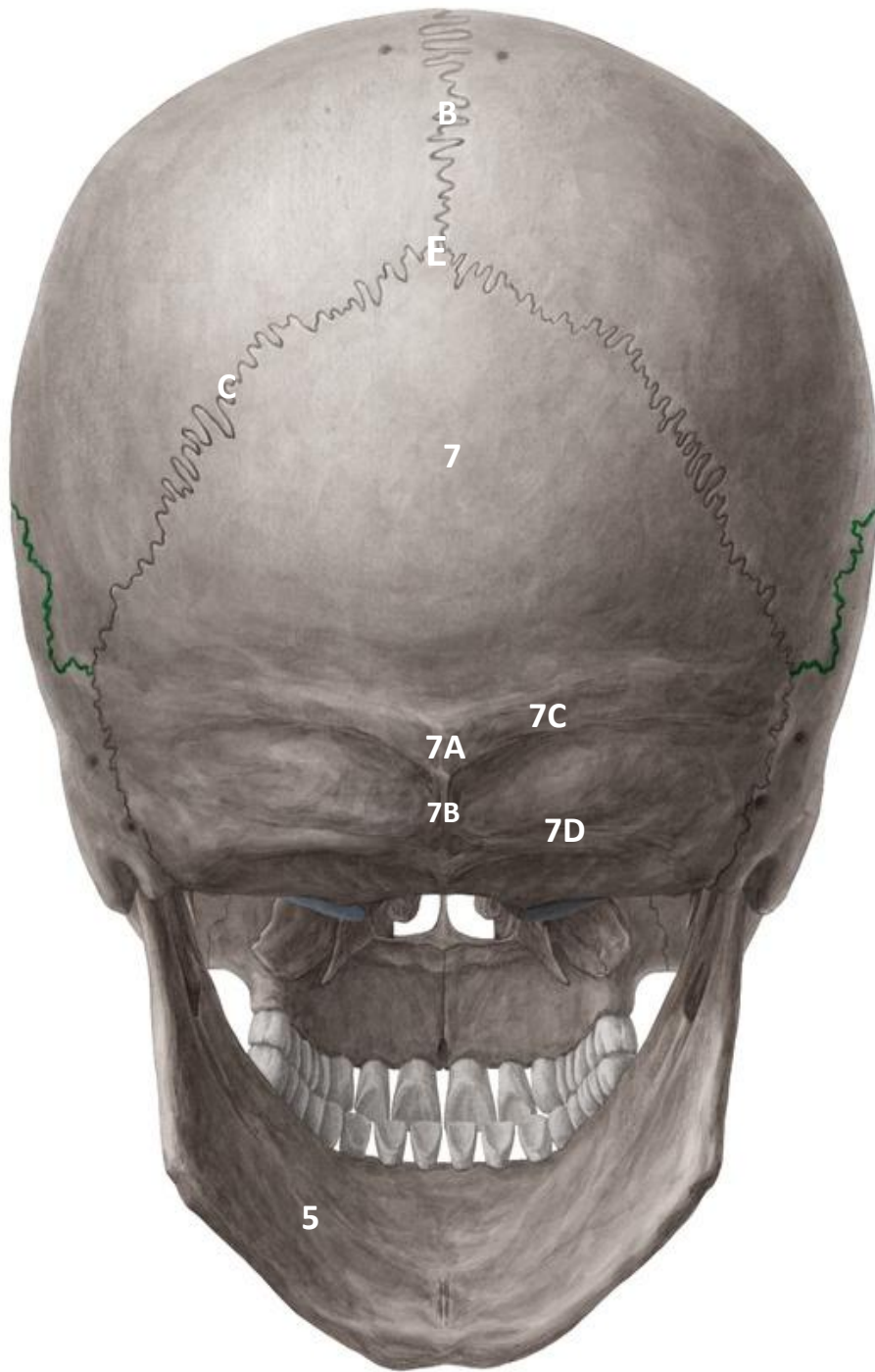
Lateral to anterior clinoid process is **superior orbital fissure**



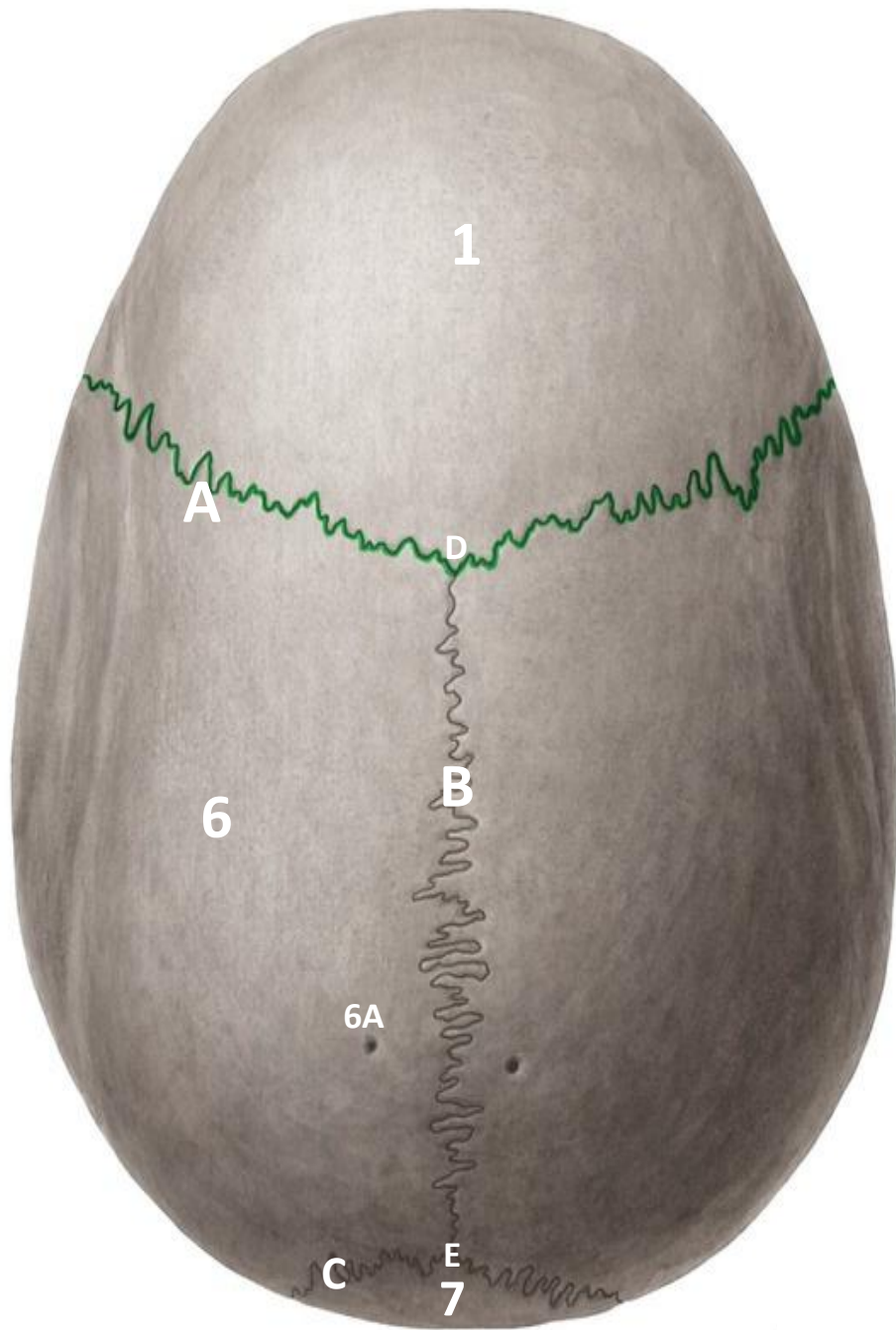
Norma Frontalis



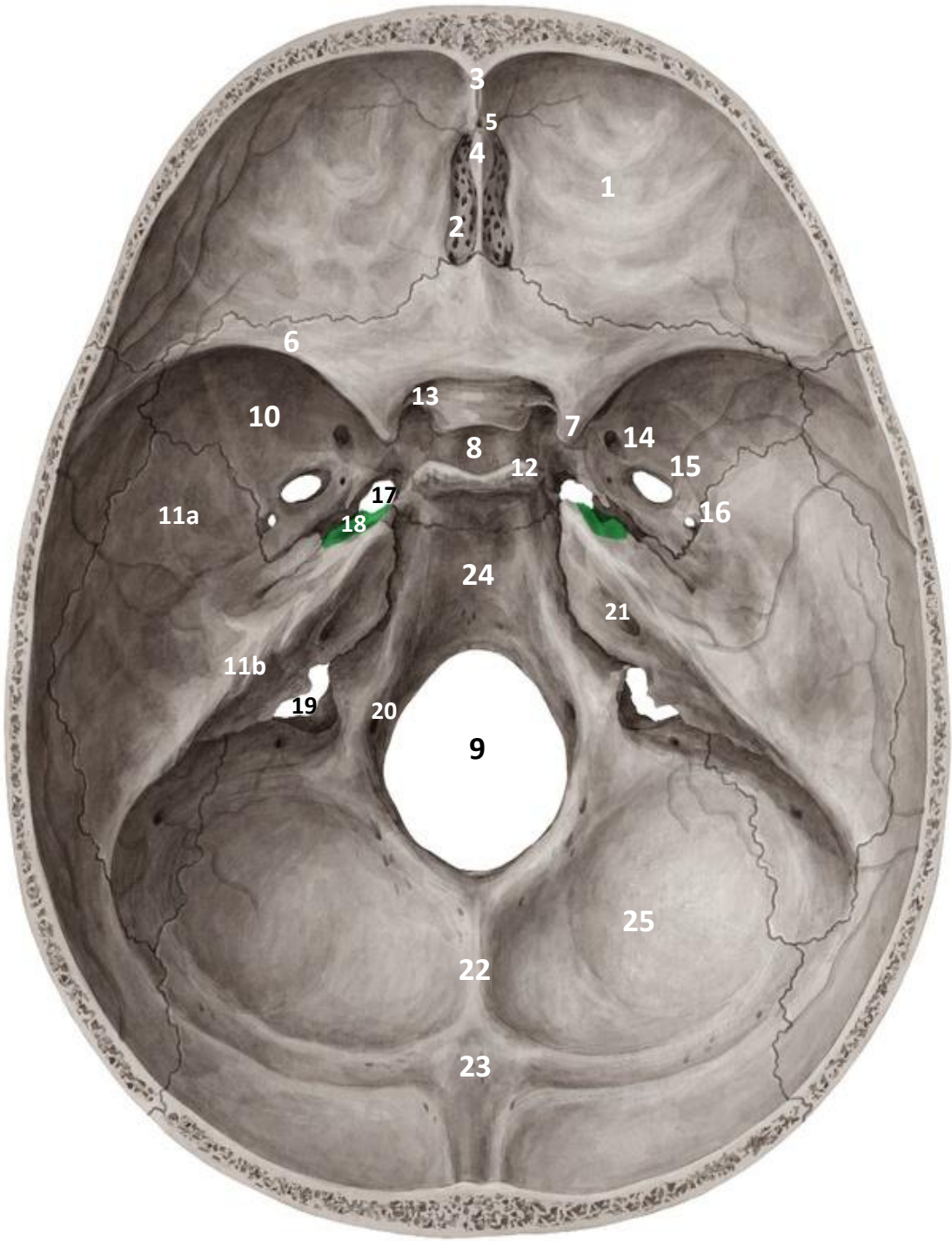
Norma Lateralis



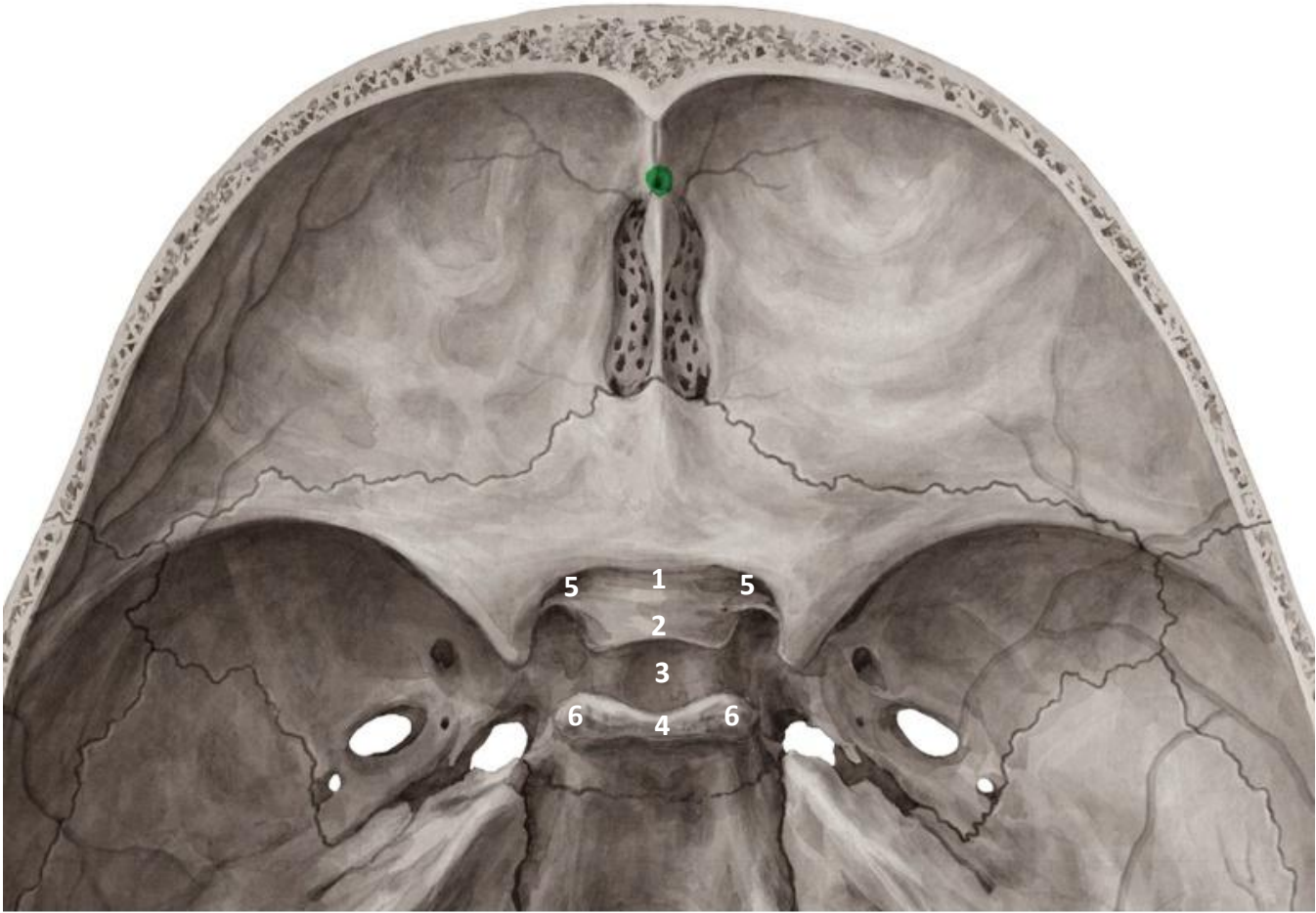
Norma Occipitalis



Norma Verticalis



Norma Basalis Interna



Body of Sphenoid