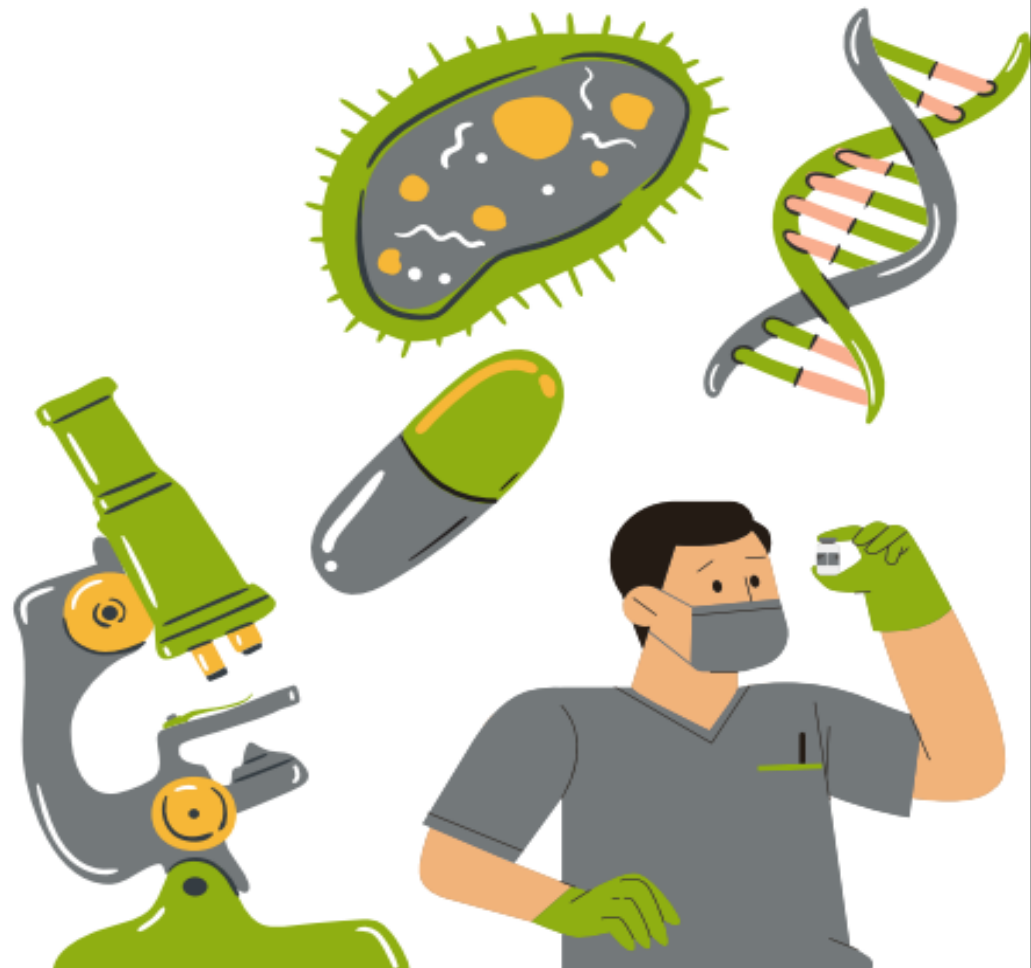




Immunology & microbiology test bank

Done by:
Shahed Atiyat
Lara Fryjat
Jana Zaidan



Immunology

1. Which of the following cells can't be infected by HIV?

- a. B cells
- b. T cells
- c. Langerhans cells
- d. Microglial cells

ANSWER: A

2. Which of the following vaccine consider safe vaccine for immunocompromised patients?

ANSWER: Diphtheria vaccine.

3. Which of the following sentences is true?

ANSWER: Germinal canter is the site of generation of memory B cells.

4. The site with the highest number of long-lived plasma cells?

ANSWER: Bone marrow.

5. The most common cause of hyperacute rejection?

ANSWER: The presence of preformed antibodies in the recipient.

6. 2016 definition of sepsis?

ANSWER: Life threatening organ dysfunction caused by a dysregulation host response to infection.

7. Binding of Ag-Ab complex to one of these receptors cause inhibition of antibodies production.

ANSWER: Fc gamma 2B

8. Which type of T helper cell cause neutrophils and monocyte activation?

ANSWER: TH17

9. Which one of the following responsible for anti-inflammatory effect?

ANSWER: Increase the production of lipocortin.

10. Which one of these incorrect combinations?

ANSWER: Tacrolimus----decrease blood pressure.

11. The mostly defective cell in severe combined immunodeficiencies (SCID):

ANSWER: T cells

12- Somatic hypermutation in lymphatic cells one of the following is true:

ANSWER: happens in light and heavy chains

13- The main mechanism of Cortisol:

A- increase anti-inflammatory proteins (lipoprotein)

B- decrease pro inflammatory molecules (mainly IL-2)

ANSWER:

14- The tumor can resist the immune system by producing one of the following:

ANSWER: PDL-1

15- It was a clinical case question, but the key information was (the patient has a defective enzyme which is responsible for producing super oxide in macrophages the diagnosis should be:

ANSWER: clinical granulomatous disease

16- The last to be seen at the site of a bacterial infection is:

ANSWER: naïve T cells

Bacteriology

17. Most of the bacterial normal flora is?

ANSWER: Gram positive coagulase negative.

18. streptococcus pneumonia colonized in?

ANSWER: Nasopharynx.

19. Most common cause of food poisoning?

ANSWER: Bacillus cereus.

20. which one of these sentences is wrong?

ANSWER: Fungi is prokaryote and bacteria is eukaryote.

21. Most common cause of UTI?

ANSWER: E.coli

22. All the following is part of normal microbiota except?

ANSWER: Cryptococcus neoformans.

23. One of these sentences is false regarding to mycobacterium tuberculosis?

ANSWER: Extracellular.

24. One of these diseases causing pandemic?

ANSWER: Yersinia.

25. Which one consider a common cause of catheter infection?

ANSWER: Staphylococcus aureus.

26. It was a clinical case question, but the key information was (this bacterium has a greenish color and sweet smell):

ANSWER: Pseudomonas aeruginosa.

27. gram positive bacteria +hyphae+ it causes draining sinus:

ANSWER: Actinomyces.

28. Schistosoma haematobium's spore:

ANSWER: Subterminal sharp spine.

29. Bacteria causes tick bites:

ANSWER: obligate intracellular.

30. Coagulase mannitol salt agar:

ANSWER: Staphylococcus.

31. MacConkey agar:

ANSWER: selective and differential.

32. The bacteria that caused worldwide pandemic:

ANSWER: Yersinia.

33. Which one of the following bacteria with gonorrhoea and meningitis:

ANSWER: Neisseria.

34. In antibiotic susceptibility test which one of the following represents the correct steps order:

ANSWER: we use a pure colony, one type of antibiotics then we see the zone around the antibiotic disk.

35. A scaris lumbricoid, which is wrong:

ANSWER: the eggs need 2-6 weeks to be embryonated.

Virology

36. The standard method for diagnosis of SLE is?

ANSWER: Anti double stranded DNA indirect immunofluorescence.

37. Which of the following viruses cause cancer?

ANSWER: Merkel cell polyomavirus

38. Which of the following viruses transmitted by arthropods?

ANSWER: Dengue virus.

39. Which of the following viruses cause aseptic meningitis?

ANSWER: Coxsackievirus.

40. Direct Acting Antiviral drug use in treatment of?

ANSWER: Hepatitis C.

41. Which one of these viruses cause bronchiolitis in infant?

ANSWER: Respiratory syncytial virus.

42. The presence of Koplik spot consider an indicator for one of these infections?

ANSWER: Measles.

43. Which of the following sentences wrong?

ANSWER: BK viruses consider an oncoviruses.

44. One of these viruses is a common virus in causing gastroenteritis in infant?

ANSWER: Rota virus.

45. The main reason behind the eradication of smallpox virus is?

ANSWER: Because the smallpox virus is an antigenically stable

46. The fourth-generation test of HIV-1 shows antibodies against all the following antigens except:

ANSWER: IgG and IgM against HIV-1(type P).

47-The virus that causes hydrophobia:

ANSWER: rabies.